

Connected Backup

Software Version 9.0.3

Administering PC Agents



Document Release Date: October 2020
Software Release Date: October 2020

Legal notices

Copyright notice

© Copyright 2016-2020 Micro Focus or one of its affiliates.

The only warranties for products and services of Micro Focus and its affiliates and licensors ("Micro Focus") are set forth in the express warranty statements accompanying such products and services. Nothing herein should be construed as constituting an additional warranty. Micro Focus shall not be liable for technical or editorial errors or omissions contained herein. The information contained herein is subject to change without notice.

Documentation updates

The title page of this document contains the following identifying information:

- Software Version number, which indicates the software version.
- Document Release Date, which changes each time the document is updated.
- Software Release Date, which indicates the release date of this version of the software.

You can check for more recent versions of a document through the [MySupport portal](#). Many areas of the portal, including the one for documentation, require you to sign in with a Software Passport. If you need a Passport, you can create one when prompted to sign in.

Additionally, if you subscribe to the appropriate product support service, you will receive new or updated editions of documentation. Contact your Micro Focus sales representative for details.

Support

Visit the [MySupport portal](#) to access contact information and details about the products, services, and support that Micro Focus offers.

This portal also provides customer self-solve capabilities. It gives you a fast and efficient way to access interactive technical support tools needed to manage your business. As a valued support customer, you can benefit by using the MySupport portal to:

- Search for knowledge documents of interest
- Access product documentation
- View software vulnerability alerts
- Enter into discussions with other software customers
- Download software patches
- Manage software licenses, downloads, and support contracts
- Submit and track service requests
- Contact customer support
- View information about all services that Support offers

Many areas of the portal require you to sign in with a Software Passport. If you need a Passport, you can create one when prompted to sign in. To learn about the different access levels the portal uses, see the [Access Levels descriptions](#).

Contents

Chapter 1: Agent overview	9
The role of the Agent	9
Support Center	9
Support Center interface	10
Nodes	10
Communities and subcommunities	11
Technicians	11
Communities	12
Agent configurations	12
Rules	12
Reports	12
Inheritance of Support Center objects	12
Duplicate object names	13
Open Support Center	13
Internet Explorer preparation for FDCC environments	13
SCBrowserUtils.dll Signed ActiveX Control	14
Adobe SVG Viewer NPSVG3.dll ActiveX Control	14
Agent accounts	15
Agent connections to Data Centers	15
Agent connection properties	15
Proxy servers	16
Connect through a SOCKS proxy server	16
Connect through a Non-SOCKS proxy server	16
Connect Through firewalls	17
Network interruptions	17
Agent deployment tasks	17
Create communities and subcommunities	17
Specify properties and settings	17
Distribute the Agent software	18
Register and install the Agent	19
Chapter 2: Set up communities and accounts	21
Communities	21
Communities in Support Center	21
The Default community	21
New communities	22
Subcommunities	22
Create subcommunities	23

Agent accounts in subcommunities	23
Disable registration in communities	23
Manage accounts	24
View an account number	24
View Account Information	25
Change account status	25
Managing general account functions	27
Reserve accounts	27
Change the primary server for an account	27
Ordering account images on media	28
Change an agent configuration	28
Send informational messages to Agents	28
Display backup messages	29
Enable the display of the Agent status icon	30
Agent Security	30
Technician accounts	31
Licenses for Agent accounts	31
How licenses affect the Support Center display	32
License inheritance and allocation	32
Used and unused licenses	32
Licensed features for communities	33
Feature state inheritance	33
Expired licenses	33
Effect of licenses on accounts and communities	34
Manage licenses and licensed features	35
License allocation examples	35
Inherited licences	35
Allocated licenses	36
Licenses allocated to subcommunities	37
Allocate licenses	38
Enable or disable licensed features	39
Apply bandwidth throttling during Agent backups	39
Chapter 3: Create Agent configurations	41
About Agent configurations	41
Configuration components	41
Profile and Website settings	42
Agent versions	42
Agent settings	42
Agent rule sets	42
Default Agent configuration	43
Create an Agent configuration	43

Allocate licenses	43
Create an Agent version	44
Create Agent settings	44
Create Profile and Website settings	45
Create an Agent rule set	45
Create the Agent configuration	46
Chapter 4: Create Agent rule sets	47
Rule types	47
The rule matching process	47
Rule logic	48
Rule precedence	49
Rule categories	50
Create rules	51
Best practices for creating rules	51
Use rule sets	51
Rules page	52
Use the Agent Rules wizard	53
Smart scan rule	54
Chapter 5: Agent security features	57
Encryption	57
Access Control List management	57
Unauthorized access prevention	57
Security certificates	58
Password protection for retrieval	58
Prevent access to files on a lost or stolen computer	58
Chapter 6: Brand product components	60
Branding overview	60
Agent branding options	60
Support Center branding options	62
Account Management Website branding options	62
Branding options for Agents	63
Brand the Agent splash screen	63
Branding in the Agent Installation wizard	64
Branding options in the Agent User interface window	65
Brand the Welcome to the Agent window	66
Brand the Enter Password dialog box	66
Brand the Synchronizing window	66
Brand the Agent console	67
Brand the About window	68

Brand the Shortcut Menu for the Agent Status icon	68
Branding options for Support Center	68
Inherited branding	69
Brand the Support Center sign in page	69
Brand the Change Password Dialog Box	69
Brand the Support Center Interface	70
Branding Options for the Account Management Website	70
Brand product components	71
Requirements for Agent graphics	71
Requirements for Support Center graphics	71
Requirements for Account Management Website Graphics	72
Technician account requirements	72
Start the branding process	73
Gain access to branding communities	74
 Chapter 7: Deploy Account Management Website	 75
Overview of Account Management Website	75
Deploy Account Management Website	76
Ensure security	76
Edit the Terms of Use and Privacy pages	77
Set the Default URL for Registration and Sign In	77
Set up user access	77
Set up technician access	78
Account credentials	78
Legacy PC Agent accounts	78
Account credential management	79
Account Management Website Interface	79
Welcome page	79
Registration page	80
Sign In page	81
Summary page	81
MyRoam	82
License and permission requirements	83
MyRoam installation	83
Enable MyRoam	83
Enable MyRoam for individual accounts	84
 Chapter 8: Agent interfaces	 85
Overview of the Agent interfaces	85
Agent Startup wizard	86
Startup Wizard main pages	86
Startup Wizard – Create Account option	87

Startup Wizard – Recover Account Option	89
Agent User Interface	90
Agent Main window	90
Agent user interface components	91
Use the Agent user interface	92
Agent command-line interface	93
Use the UpdateProfile Command	93
Chapter 9: File backup	95
The backup process	95
Disk scan	95
File analysis	96
Modified file identification	97
Modified mail file identification	97
File preparation	97
Connection to the Data Center	97
Transmission of files	98
Record of backup results	98
Connected EmailOptimizer information	98
Back up encrypted files, metadata, and attributes	100
Backup settings	101
Use the Agent user interface to back up files	103
Back Up panel	104
View History dialog	104
Backup monitoring	105
Back up files using the Backup command	106
Requirements for backing up open files	106
Backup command syntax	106
Backup command options	107
Backup command example	107
Chapter 10: File retrieval	108
The Retrieval Process	108
File repackaging	108
E-mail notification	108
Support for encrypted files, metadata, and attributes	109
Retrieval of encrypted files	109
Retrieval of sparse files	109
Retrieval of multistream files	109
Retrieval of reparse points	109
Retrieval of security descriptors	110
Retrieval of open files	110

Retrieve files using the Agent user interface	110
Retrieve panel	110
Retrieve permissions	111
File selection	111
Destination options	112
File name conflict options	112
Retrieve files using the Retrieve command	113
Retrieve command syntax	113
Retrieve command options	114
Examples of how to use the Retrieve command	116
Skip retrieval of a file	116
Retrieve a single file	117
Retrieve a single file and specify date and time	117
Specify a retrieve location	117
Retrieve files only in a top-level folder	117
Retrieve all files in a backup set	117
Retrieve data from media	118
Use the Retrieve tab to retrieve data from media	118
Retrieve data using MyRoam	119
The MyRoam retrieval process	119
Files that you cannot retrieve	120
Select files for retrieval	120
Retrieve files	121
 Chapter 11: Agent history and reports	 124
Agent history	124
View Agent history in the Agent interface	124
Viewing Agent History in Support Center	126
Support Center reports	127
Default reports	128
Report components	129
Create report templates	130
Generate and view reports	130
View charts	130
Save report results in XML	131
Create account groups	131
 Index	 132
 Send documentation feedback	 137

Chapter 1: Agent overview

This chapter explains the role of the Agent, the components that comprise the Agent, and how to deploy the Agent.

- [The role of the Agent, below](#)
- [Support Center, below](#)
- [Agent accounts, on page 15](#)
- [Agent connections to Data Centers, on page 15](#)
- [Agent deployment tasks, on page 17](#)

The role of the Agent

The Agent is a software that you install and configure on client computers. You use the Agent to back up files on the client computers and to retrieve files that you previously backed up.

Every Agent has an account in the Data Center. The account contains information about the Agent configuration.

The Agent sends files to the Data Center for backup. To perform a backup, the Agent scans the hard drives of the computer on which it resides for files that require backup. Next, the Agent contacts the Data Center to initiate a backup session. The Agent prepares the files for backup and notifies the Data Center if users have deleted previously backed-up files since the last backup session.

To retrieve or restore files, the Agent requests the files from the Data Center, then downloads or restores the files to the client computer.

The Agent initiates communication with the Data Center. The Data Center cannot contact an Agent independently.

IMPORTANT:

The Agent does not support multi-user environments. Although you can install the Agent on a computer that hosts more than one user account, you can only associate one user account with the Agent. Additionally, more than one user account on a computer that hosts the Agent can cause problems during file retrieval and backups.

Support Center

Support Center is a Web-based management application that technicians use to manage Agent configurations and accounts. You can use Support Center from any computer with a supported browser and a network or Internet connection. For the list of supported browsers, refer to the *Micro Focus Connected Backup Requirements Matrix*.

Use Support Center to manage the following information:

- Technician accounts
- Communities and Agent accounts
- Agent settings
- Agent profile and Web site settings
- Agent versions
- Agent rules
- Reports

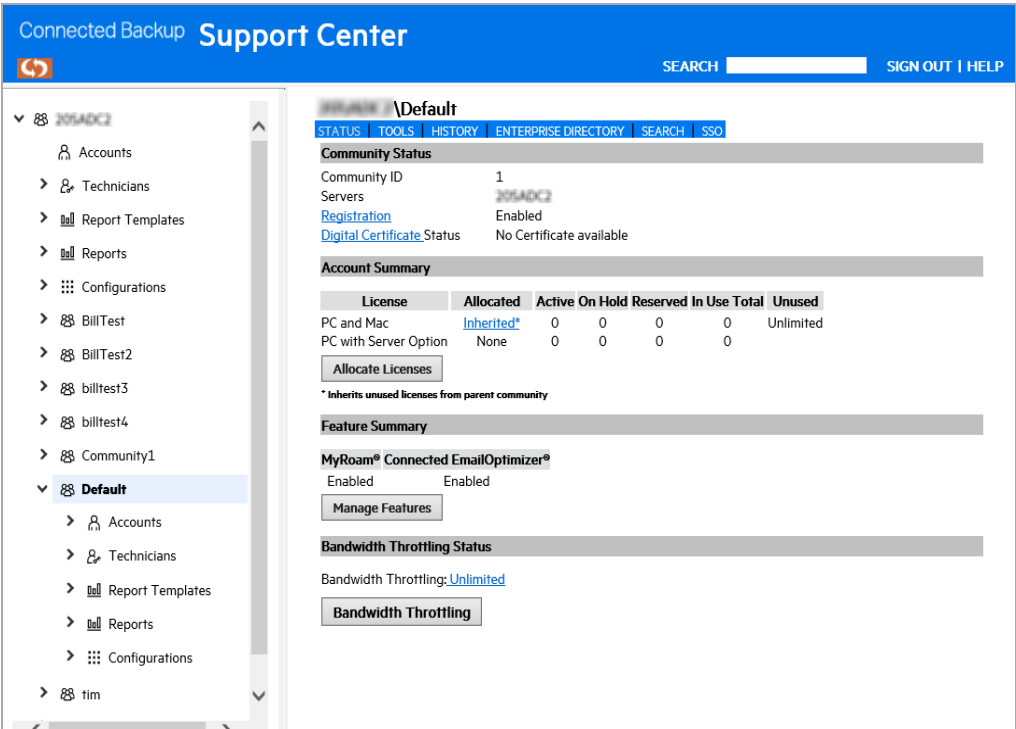
Support Center interface

The Support Center interface consists of two panes.

The left pane displays a hierarchical tree that represents the organization of Agent accounts on your Data Center (if you host your Data Center) and your communities.

The right pane displays information relevant to the node that you select in the left pane.

The following figure shows the Support Center interface.



Nodes

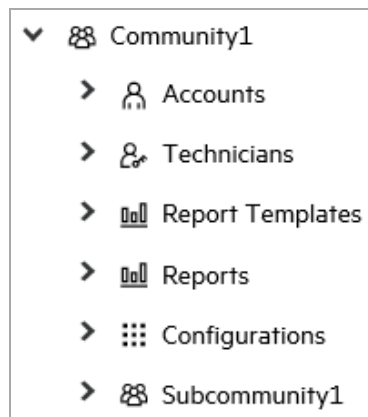
The following table describes the major nodes and subnodes in the Support Center interface:

Item	Description
Top-level node	Expand the top-level node to view the nodes and subnodes in the tree. The top-level node uses the Data Center server name and is the top-level community.
Accounts	Find and display information about the user accounts in your Data Center.
Technicians	Create and modify logon accounts for technicians who use Support Center.
Report Templates	Create templates to generate reports that track account use and other statistics.
Reports	Display report results after you use the Report Templates node to generate a report.
Legacy PC Configurations	Use the Configuration Summary page to create, edit, and view version 7.x or earlier PC Agent configurations.
Configurations	Create, edit, and view Profile and Website settings, Mac Agent configurations and version 8.0 or later PC Agent configurations.

Communities and subcommunities

You can create communities and subcommunities to organize accounts. A community appears as a node below the top-level node. A subcommunity appears as a subnode below a community node.

The following figure shows **Subcommunity 1** under **Community 1**.



Each community and subcommunity has its own **Accounts**, **Technicians**, **Configurations**, **Report Templates**, and **Reports** nodes.

Technicians

Technicians include Data Center administrators, Information Technology individuals, Technical Support individuals, and others who support your user community. To use Support Center to perform administrative tasks, a technician must create a technician account. A technician can give the account as many permissions as necessary, and can delegate different tasks to supporting personnel.

For more information, see [Set up communities and accounts, on page 21](#).

Communities

A community is a group of accounts with a common element. You can create communities based on department, office location, Agent configuration, or any category that helps you manage your accounts efficiently.

For more information, see [Set up communities and accounts, on page 21](#).

Agent configurations

An Agent configuration is a set of settings and features that you want to apply to one or more Agents. You can create configurations to meet enterprise needs such as a backup schedule, security, and features. After you create an Agent configuration, users can go to the Account Management Website to download an Agent Setup file that uses the configuration. The Agent Setup applies the configuration settings when users employ it to install an Agent, recover an Agent account, or upgrade an Agent. Alternatively, you can install the Agent Setup file on client computers.

For more information, see [Create Agent configurations, on page 41](#).

Rules

The Agent uses rules to determine which files to back up. When you build an Agent configuration, you must assign a rule set.

For more information, see [Create Agent rule sets, on page 47](#).

Reports

You can use Support Center to create and run reports about the use and status of accounts. You can run reports once or regularly. You can configure reports to include charts. You can save reports in XML format.

For more information, see [Agent history and reports, on page 124](#).

Inheritance of Support Center objects

A Support Center object can be an Agent configuration, a report template, or a technician account. The inheritance feature lets you use top-level objects in all subcommunities. In other words, when you create objects in a community, the objects apply to the community and its subcommunities.

Support Center displays inherited objects in the left pane in regular text. It displays objects that you create in the community in bold text. You cannot edit the inherited objects. However, you can edit the objects you create.

Duplicate object names

Because communities contain inherited objects and objects that you create, a community can contain multiple objects that have the same name.

For example, if a parent community has a configuration named Finance, its subcommunity inherits that configuration. You also can create a new configuration in the subcommunity named Finance. Support Center displays the inherited community in regular text and the configuration you create in **bold** text.

As a best practice, use unique names or unique descriptions for all objects you create.

Open Support Center

You can open Support Center from any computer with Internet Explorer 6.0 or later and a network or Internet connection.

Open Support Center in the following ways:

- **Subscription users.** Open a Web browser, and then enter the URL that the enterprise that hosts the Data Center provides.
- **Licensed users.** Open a Web browser, and then enter a URL in one of the formats described in the following table:

SSL Status	Using DNS or WINS to store server names	Not using DNS or WINS to store server names
SSL is enabled	<code>https://server_name/supportcenter/</code> where <code>server_name</code> is the name of the server that hosts Support Center	<code>https://ip_address/supportcenter/</code> where <code>ip_address</code> is the IP address of the Support Center server
SSL is not enabled	<code>http://server_name/supportcenter/</code> where <code>server_name</code> is the name of the server that hosts Support Center	<code>http://ip_address/supportcenter/</code> where <code>ip_address</code> is the IP address of the Support Center server

Internet Explorer preparation for FDCC environments

You must install the following applications in a Federal Desktop Core Configuration (FDCC) environment to allow Internet Explorer access to Support Center in order to manage your Connected Backup accounts:

- `SCBrowserUtils.dll` signed ActiveX control
- Adobe SVG viewer `NPSVG3.dll` ActiveX control

These applications require administrative rights to install.

SCBrowserUtils.dll Signed ActiveX Control

Support Center uses the `SCBrowserUtils.dll` ActiveX control for the following functions:

- Downloading Agent Setup files
- Uploading Agent File Sets
- Uploading Branding-related files
- Uploading MSI certificates
- Downloading report XML file results
- Running the ACE utility to update Legacy Agent configurations

To install the application

1. Use Internet Explorer to log in to the Support Center as a technician.
2. Navigate to an Agent configuration page to download an Agent Setup file.
3. During the page display, Internet Explorer prompts the user to install the `SCBrowserUtils.dll` ActiveX control.
4. Click **Install**.

Internet Explorer installs the control. Once the **Download** button is selectable, the control is installed.

NOTE:

In Internet Explorer 8, to enable the ActiveX control

- a. In Internet Explorer, select **Tools > Manage Add-ons**.
- b. In the Manage Add-ons window, right-click **BrowserUtility Class**, and then click **More Information**.
- c. In the More Information window, click **Allow on all sites**, and then click **Close**.
- d. Close the Manage Add-ons window and return to Internet Explorer.

Adobe SVG Viewer NPSVG3.dll ActiveX Control

Support Center uses the Adobe SVG viewer ActiveX control to display graphical report results.

To install the application

1. Download the installation file for the control from <http://www.adobe.com/devnet/svg/adobe-svg-viewer-download-area.html>.
2. Install the control by running the setup file and following the on-screen instructions.

Agent accounts

Each deployed Agent has an account in the Data Center. Each account has a unique 10-digit number that identifies it. The Data Center uses this account number to label and organize all data that it backs up from the client. To view the account number, search for an account in Support Center. Record this number in case you need to reinstall the account.

As a technician, you can use Support Center to complete the following tasks:

- Change the account status.
- Manage account features.
- Manage security settings.
- Create and change Agent configurations.

As a user with native Connected Backup account credentials, you can use the Account Management Website (AMWS) to perform the following tasks:

- Change your password.
- Update your profile (e-mail address, address, and telephone number).

However, if your account is mapped to an enterprise directory or a single sign-on account, you cannot use AMWS to change your profile.

For more information about how to manage accounts, see [Manage accounts, on page 24](#).

Agent connections to Data Centers

To connect to the Data Center, the Agent can use any Transmission Control Protocol/Internet Protocol (TCP/IP) connection, including local area networks (LANs) and wide area networks (WANs). The Agent supports Windows Sockets 1.1 and Windows Sockets 2.0 and uses whichever version available.

The amount of network traffic that Agents generate depends on the following conditions:

- Number of Agents that you deploy
- File backup rules
- Agent backup schedules relative to your network peak and off-peak hours of use for your network

Agent connection properties

To connect to the Data Center, the Agent uses the DNS name or IP address of the Data Center server. In a mirrored configuration, you can designate which of two Data Center servers the Agent contacts as the primary server.

The Data Center replicates data from one server to the other. If the primary server is busy, the Agent connects to the secondary server to back up files and retrieve files.

When you run the Data Center setup, you can configure which Data Center server acts as the primary server. You can designate different servers as the primary server for different communities. For example, if you manage a mirrored configuration and have six distinct communities, you can designate Server 1 as the primary server for Communities A, B, and C. You then can designate Server 2 as the primary server for communities D, E, and F. When you designate different servers for different communities, each server shares the volume of Agent transactions.

Proxy servers

If the client computer and the Data Center reside on different sides of a proxy server, configure the Agent to connect to the Data Center through the proxy server.

The Agent can connect through the following proxy servers:

- SOCKS proxy server
- Non-SOCKS proxy server
- Software firewall

You configure the proxy server settings in Support Center. For more information, refer to Support Center Help.

Connect through a SOCKS proxy server

When you use a SOCKS proxy server, all connections to the Data Center first require a connection to the SOCKS server. The server then uses the IP/Port information in the Agent configuration to connect to the Data Center.

To configure an Agent to connect to the Data Center through a SOCKS proxy server, use Support Center to edit the proxy server settings. Specify the IP address and port number for the proxy server. The Agent uses the SOCKS protocol to tell the proxy server the IP address and port number (16384) of the Data Center.

If you use SOCKS, do not reconfigure your proxy server. For more information about how to configure Agent proxy server settings, refer to Support Center Help.

Connect through a Non-SOCKS proxy server

If your enterprise uses a non-SOCKS-compliant proxy server, configure the Agent and your proxy server to communicate with the Data Center. You configure the Agent proxy server information to map the Data Center IP address to the IP address of the proxy server, and you specify the port on which to connect to the proxy server. You can use domain names instead of IP addresses when you specify the Data Center and proxy server mapping. If you use a mirrored pair, designate this mapping for both the primary and secondary servers.

The Agent uses the mapping to connect to the IP address of the appropriate proxy server (using the appropriate port) instead of connecting directly to the Data Center server. The firewall then routes the connection to the Data Center that resides behind the proxy server.

Connect Through firewalls

If the client computer uses a third-party firewall, such as Zone Labs ZoneAlarm or Symantec Norton Internet Security, configure the Agent as though the computer does not use a proxy server. The firewall software might prompt the user to allow the Agent to connect before it can back up or retrieve files.

Network interruptions

If the initial attempt to connect to a stand-alone Data Center server fails, the Agent records the failure in the Agent History. In a mirrored environment, if an Agent cannot establish a network connection to its primary server, the Agent attempts to connect to the secondary server. If the Agent connects to its secondary server, it proceeds as normal and completes its task. If the Agent cannot connect to its secondary server, it records the failed attempt in the Agent History.

If an interruption in the network connection occurs or the connection fails during a backup or retrieval, the Agent attempts to reconnect and finish the operation after it waits for a predefined period of time. After the wait period, the Agent attempts to reconnect to the Data Center server. The Agent does not attempt to connect to a different Data Center server to continue an aborted backup or retrieval. When the Agent reconnects, it starts at the beginning of the last file it worked on before the connection failed.

Agent deployment tasks

You begin a first-time Agent deployment by logically grouping your user accounts into communities. You then define Agent configurations that have appropriate permissions and features for each community. You can have several different Agent configurations that you can assign to accounts and communities individually.

After you create or modify an Agent, you can download the Agent Setup program to users' computers for registration and installation.

Create communities and subcommunities

You can configure multiple Agent configurations, each with different properties, to suit the needs of different groups in your enterprise. Before you create new Agent configurations, consider the different groups in your enterprise and determine which Agent features benefit each group.

Use Support Center to create subcommunities based on factors such as department, geographical location, or job function. After you create a subcommunity, you can move an Agent configuration to that subcommunity, or create a new Agent configuration with properties that meet the requirements of the subcommunity.

For more information, see [Set up communities and accounts, on page 21](#).

Specify properties and settings

The **Configurations** node in Support Center contains the following types of Agent configurations:

- **PC Configurations.** PC Agent configurations.
- **Mac Configurations.** Mac Agent configurations.

Support Center can contain the following Legacy Agent configuration:

- **Legacy PC Configurations.** Version 7.x PC Agent configurations

To define an Agent configuration, you must define the following components:

- **Agent Versions.** Determines the software version of the Agent and the language.
- **Agent Settings.** Determines the settings and features available to users.
- **Agent Rule Sets.** Determines the files included and excluded for backup.
- **Profile and Website Settings.** Determines the features that users can gain access to through the Account Management Website. The Account Management Website lets users register accounts, download Agent software, and manage their accounts.

For more information about Agent settings, versions, and rules, see [Create Agent configurations, on page 41](#).

Distribute the Agent software

After you define the Agent features during configuration, Support Center creates an Agent Setup program that installs the Agent software on a client computer. The Agent Setup program is a Windows Installer .msi file.

To distribute the file, use the following methods:

- **Account Management Website.** Users log on to this Web site to register accounts and download the Agent Setup program. You can use the Account Management Website to distribute only files customized for one user. If you use this method to distribute the files to other users, the backup process does not work correctly. All users must download their own file from the Account Management Website. For more information, refer to *Installing PC Agents*.
- **Support Center download.** You can download the Agent Setup program from Support Center and distribute a generic Agent Setup file to users so that they can install the Agent themselves. For more information, refer to *Installing PC Agents*.

NOTE: From 9.0.2 onwards, the packaging structure has changed as follows:

1. The following are the Agent Setup files when downloaded using Support Center:
 - a. AgentSetup.pkg
 - b. AgentSetup.mpkg
 - c. Resources
 - d. Install
2. The following are the Agent Setup files when downloaded using Account Management Website:

- a. AgentSetup.pkg
- b. Resources
- c. Install

Do not delete or replace any setup files. Make sure to run AgentSetup.pkg instead of earlier preferred AgentSetup.mpkg when you want to install Mac Agent.

NOTE: From 9.0.2 onwards, the `install.exe` will be outside the `AgentSetup.pkg` or `AgentSetup.mpkg`.

- **Disk image distribution.** You can install an Agent on a computer and then create a disk image to clone to other computers. For more information, refer to *Installing PC Agents*.
- **Hands-free installation.** You can download the Agent Setup file from Support Center and use the installation command-line interface to install the Agent on multiple computers simultaneously without user participation. For more information, refer to *Installing PC Agents*.

Register and install the Agent

When you register an Agent, the Data Center establishes an account for the Agent. The account identifies the Agent client computer to the Data Center server. An account number in the Data Center represents the client computer and the files on that computer.

Installation and registration occur in one of the following ways:

- After a user logs on to Account Management Website (AMWS) and enters profile information, AMWS communicates with the Data Center to register a new account. Each user must register on the Account Management Website individually to get an Agent Setup program file that is particular to the user's account. After the user registers the Agent, the user downloads the Agent Setup program and installs the Agent. Each user downloads a `.msi` file for their own use. The `.msi` file allows access only to that user's account.
- After you download the Agent Setup program from Support Center, you install and register the Agent in one of the following ways:
 - **Use the Agent Startup Wizard.** To use the Wizard, a technician must use Support Center to enable it for the Agent configuration. For more information, refer to *Installing PC Agents*.
 - **Use the Agent installation command-line interface.** You can use an XML file to specify registration information. For more information, refer to *Installing PC Agents*.

If you do not provide registration information, the Agent registers anonymously. That means that the Data Center identifies the Agent by only a computer name, and not by a user name.

During registration, the Data Center assigns a 10-digit account number to the Agent. The Data Center uses the account number to label and organize the data it receives in a backup. The Agent account is unique to the computer. You cannot use the same account number to install more than one Agent. Also, you cannot have multiple Agents or accounts on the same computer.

The Data Center tracks each Agent that you register and the total number of registrations against the total number of users permitted by your organization's license agreement, and the number of licenses allocated to a community where the Agent registers. When you use up the licenses, the Data Center

does not accept new registrations from Agents until you buy more licenses, allocate additional licenses to the community, or cancel unused accounts.

Chapter 2: Set up communities and accounts

This chapter explains how to set up communities and subcommunities, manage accounts, work with technician accounts, allocate and manage licenses, and apply bandwidth throttling to Agent backups.

- [Communities, below](#)
- [Subcommunities , on the next page](#)
- [Manage accounts, on page 24](#)
- [Managing general account functions, on page 27](#)
- [Agent Security, on page 30](#)
- [Technician accounts, on page 31](#)
- [Licenses for Agent accounts, on page 31](#)
- [Manage licenses and licensed features, on page 35](#)
- [Apply bandwidth throttling during Agent backups, on page 39](#)

Communities

A community is a group of Agent accounts that share common characteristics, such as configuration settings, the geographical location of the clients, or similar bandwidth throttling requirements. You can use communities to run reports, edit settings, upgrade Agent configurations, and manage accounts.

Communities in Support Center

Each community that you create in Support Center appears as a node in the left pane of the Support Center interface. The node contains subnodes that represent the accounts, technicians, reports, configurations, and subcommunities in the community.

Each community or subcommunity inherits objects from the top-level community Data Center (root level) node. For example, technicians whose permissions you define in the root level of your community can gain access to all subcommunities. You can use the Agent configurations, reports, and other objects that are defined at the root level of your community in any subcommunity.

The Default community

If you host your Data Center, depending on the permissions that are assigned to your technician account, you might have access to a community labeled **Default**. When you install a self-hosted

Support Center, the installation procedure creates this default community.

The Default community includes the Default Agent configuration, which contains default settings and rules. You can use this community to organize your Agents, or as a model to construct your communities. You must set the correct permissions for the technician account that you use to log on to Support Center so that the account allows you access to the Default community.

If you do not host your own Data Center, you have access to specific subcommunities in the Default community. However, you might not have permissions to gain access to the top-level Default community.

New communities

You can create as many communities and subcommunities as necessary to organize your accounts. All subcommunities that you create inherit the default Agent configuration in the root community. However, any new Agent configurations that you create in a new subcommunity are available only to that subcommunity and any of its subcommunities.

For more information, refer to Support Center Help.

To create a new community

1. Log on to Support Center.
2. Click **Tools > Add Community**.
The Add Community page opens.
3. In the **Community Name** field, enter a community name.
4. Click **Save**.

The name of the community appears in the left pane of the Support Center. The community node contains subnodes representing the accounts, technicians, reports, and configurations for the community.

IMPORTANT:

You can rename and move communities. However, you cannot delete communities.

Subcommunities

You can create subcommunities in any community that you can access. You can use subcommunities to divide your Agent accounts into smaller categories, based on geographic location, departments, bandwidth throttling, or other criteria. You can reassociate a subcommunity with a different parent community, which is useful if you want your communities to reflect the changes in your organization. For more information, refer to Support Center Help.

NOTE:

To manage Agents more easily, create separate subcommunities for each type of Agent that you plan to deploy. Also keep Agent configurations for different operating systems in separate

subcommunities.

For more information about Agent configurations, see [Create Agent configurations, on page 41](#).

Create subcommunities

To create a subcommunity

1. Log on to Support Center.
2. Click the community for which you want to create the subcommunity.
3. From the **Tools** menu, select **Add Subcommunity**.

The Create Subcommunity page opens.

4. In the **Community Name** field, enter a name for the subcommunity.
5. Click **Save**.

The name of the subcommunity appears in the left pane of the Support Center. The subcommunity node contains subnodes representing the accounts, technicians, reports, and configurations for the community.

For more information, see the Support Center Help.

Agent accounts in subcommunities

Agent accounts in a subcommunity share characteristics with the parent community, but they have distinct characteristics that set them apart from the parent community. For example, you might create one community to represent the Agents in your branch office. In this parent community, you can create subcommunities to represent the departments in the branch office, such as Finance, Accounting, and Marketing.

The Agents in each subcommunity inherit versions, settings, and rule sets from the parent community. They also can contain configurations unique to each subcommunity. For example, you define common rules at the community level for your entire organization. Then, for each group in your organization, you have subcommunities for which you can define unique settings. You then use the common rules and the Agent settings that you define for each group to create Agent configurations for each subcommunity.

Disable registration in communities

After you deploy Agents throughout your enterprise, you can use Support Center to disable registration for communities and subcommunities. When you disable registration, no one can use a copy of Agent Setup to register an account that you did not intend to create. If you must add new accounts to the community or recover an account, you can enable registration.

Manage accounts

Use Support Center to perform the following account management tasks:

- View an account number.
- View account information.
- Change account status.
- Manage general functions.
- Manage Agent security.
- Gain access to the Account Management Website to manage an account.

View an account number

Each deployed Agent has an account in the Data Center. Each account has a 10-digit number that uniquely identifies it. The following is an example of an account number:

10203-61718

The sixth digit in the account number (the digit following the dash) is a check digit. Some of the Data Center database tables drop the check digit and use a nine-digit format instead (for example, 102031718.)

The Data Center uses this account number to label and organize all data backed up from the client.

You can view an account number in the following ways:

- From the Agent interface
- From Support Center

To view your account number from the Agent interface

1. Open the Agent interface.
2. Click **Help > About Connected Backup/PC Agent**.

The About Connected Backup window opens. Your account number is at the bottom of the window.

You can use the Agent interface to view the number of only your own account.

To view an account number from the Support Center

1. Use your technician ID and password to log on to Support Center.

The organization that hosts your Data Center provides the URL you need to log on.

2. In the left pane of Support Center, click **Accounts**.

The Account Search page opens in the right pane.

3. On the Account Search page, enter one of the following kinds of information:

- Account name
- Organization name
- Department

4. Click **Search**.

The Accounts page lists the account number for every account that matches the search criteria.

View Account Information

To view information about an account

1. Log on to Support Center.
2. In the left pane of Support Center, click **Accounts**.

The Account Search page opens in the right pane.

3. On the Account Search page, enter one of the following kinds of information:

- Account name
- Organization name
- Department
- Account number

TIP:

The fastest way to find an account in Support Center is to search for the account number. If you do not know the account number, you can use the account name, organization name, department, or other identifying criteria to search for the account. For more information, refer to Support Center Help.

4. Click **Search**.

The Accounts page opens and lists the account number for every account that matches the search criteria.

5. Click the number of the account.

The Account Summary page opens and lists information about the account.

Change account status

The status of an account determines whether the account can connect to the Data Center. If you change the account status, you can temporarily or permanently disable backup and retrieval for an Agent.

For example, change the account status to block access to the Data Center from client computers that were stolen or are no longer used. When an employee leaves your organization, you can cancel the

account for that employee so that unauthorized users cannot gain access to the files that the former employee previously backed up.

The account status includes the following options:

Status option	Description
Active	An account can connect to the Data Center and perform backup and retrieve operations.
On Hold	<p>An account temporarily cannot connect to the Data Center and perform backup and retrieve operations.</p> <p>For example, you can place an account on hold if a employee associated with the account takes a long-term leave from your organization. When the user returns, you can change the status of the account back to Active.</p>
Canceled	<p>An account cannot connect to the Data Center and perform backup and retrieve operations. The Compactor labels the information that the Agent backed up as expired and, after a defined expiration period, removes the information from the Data Center server.</p> <p>For example, you can cancel a user account if the employee associated with the account permanently leaves your organization.</p>
Canceled and Data Deleted	The compaction process ran on a canceled account, and the files, archives and encryption key associated with the account no longer exist on the Data Center.

TIP:

To cancel or place on hold multiple SSO-enabled accounts at the same time, use the CancelHoldAccounts command-line utility. For more information about this utility, which is part of the DC toolkit, refer to *Administering the Data Center*.

To change the status of an account

1. Open Support Center and search for the Agent account.
2. When Support Center displays the search results, click the Agent account number.
The Account Summary page opens.
3. On the Account Summary page, click **Account Status**.
The Change Account Status page opens.
4. Select a status option.
For more information, refer to Support Center Help.
5. To save your changes, click **Change Status Now**.

Managing general account functions

Use Support Center to manage the following general account functions:

- Reserve accounts.
- Change the primary server for an account.
- Order images on media for accounts.
- Change an Agent configuration.
- Send messages to Agents.
- Display backup messages.
- Display the Agent Status icon.

Reserve accounts

As an alternative to the standard account registration, you can reserve accounts in specific communities. To reserve accounts, you can use Support Center to generate account codes. Users can enter the code or ticket to register under the Agent community.

When users register new accounts, the Data Center verifies the code or ticket that they specify. If the code or ticket is valid, the Data Center registers the account in the community where the technician created the reservation.

NOTE:

Reserved accounts use client licenses on the Data Center in the same way as Active accounts.

For more information about how to reserve accounts, see Support Center Help.

Change the primary server for an account

In mirrored or clustered environments, Agents use one Data Center server as their primary server during backup or retrieval. The Agent always attempts to contact its designated primary first. If the primary is offline, the Agent connects to the mirror of the primary server to complete the operation.

You can use Support Center to change the primary server to the secondary server.

To designate a primary server for an Agent

1. Open Support Center and search for the Agent account.
2. When Support Center displays the search results, click the Agent account number.

The Account Summary page opens in the right pane.

3. On the Account Summary page, click **Primary Server**.

If the Agent does not belong to a clustered or mirrored environment, **Primary Server** is not a link.

The Change Primary Server page opens.

4. Select a primary server.
5. To change the primary server to the one that you selected, click **Save**.

For more information, see Support Center Help.

Ordering account images on media

If an account loses its data and it is inconvenient to use a network connection to restore the data, you can order an image of the account data on different types of media.

Change an agent configuration

The Agent configuration determines the following:

- Agent rules
- Security settings
- Interface controls
- Profile and Website settings

If you use multiple configurations within one community, you can change the configuration of an Agent in that community. The next time that the Agent connects to the Data Center, the Agent downloads the new configuration.

To change an Agent configuration

1. Open Support Center and search for the Agent account.
2. When Support Center displays the search results, click the Agent account number.

The Account Summary page opens.

3. Click the **Assigned Configuration** link.

The Change Agent Configuration page opens.

4. Select the appropriate configuration from the displayed list.
5. To change the configuration to the one that you selected, click **Save and Deploy**.

For more information, see [Create Agent configurations, on page 41](#) and see Support Center Help.

Send informational messages to Agents

You can send informational messages to Agents. For example, you want to provide instructions to users for an upcoming Agent configuration upgrade. This feature is different from the message notification that you can enable when you change the status of an account. For more information about

how to change the status of an account, see [Change account status, on page 25](#) and refer to Support Center Help.

When you create informational messages, the Agent receives the messages the next time it connects to the Data Center. If configured to do so, the Agent displays a message notification window that it received one or more messages from the Data Center. Users must open the Agent User interface to view the messages in the Message panel of the Summary tab.

To send a message to one or more Agents

1. Log on to Support Center.
2. Search for an account or create an account group.
3. Perform one of the following actions:
 - To send a message to a single account, from the Account Summary page, select **Tools > Send Message to Agent**.
 - To send a message to a group of accounts, from the Group Accounts page, select **Group > Send Message to Agents**.
4. In the Send Message to Agent page, enter the message that you want to send.
5. Click **Send Message**.

For more information, see Support Center Help.

Display backup messages

Depending on your Agent configuration, the Agent can display a message notification window in the following situations:

- When a backup completes and the Agent User interface is closed
- When a backup does not successfully complete after four days.

To enable backup messages

1. Log on to Support Center.
2. Select a community and expand the **Configurations** node, then expand the **PC** subnode.
The PC Agent Configuration summary page opens.
3. Expand the **Agent Settings** node, and select a setting configuration.
The Edit Agent Settings - General page opens.
4. On the Edit Agent Settings - General page, click **Display**.
The Edit Agent Settings - Display page opens.
5. In the **Messages** section of the Edit Agent Settings - Display page, select the message setting that you want to enable.
6. Click **Finish**.

For more information, refer to Support Center Help.

Enable the display of the Agent status icon

You can configure the Agent to display a status icon in the notification area of the Windows taskbar. The icon indicates whether a backup or retrieve is in progress. The icon also includes a shortcut menu that lets users do the following tasks:

- Open the Agent User interface.
- Use the Account Management Website (if enabled) to manage an account.
- Start a backup.
- Start a backup, and then shut down or log off the computer.
- Cancel a backup.
- View Agent version information.

To display of the Agent Status icon

1. Log on to Support Center.
2. Select a community and expand the **Configurations** node, and then the **PC** subnode.
3. Expand the **Agent Settings** node and select a setting configuration.
4. On the View Agent Settings page, click **Display**.
5. In the Agent Visibility section, select **Show the Agent icon in the taskbar notification area**.
6. Click **Finish**.

For more information, see Support Center Help.

Agent Security

Every account has an encryption key that the Agent creates during installation and registration. The Agent and Data Center uses the encryption key to encrypt and decrypt each file that the Agent backs up.

For additional security, you can configure the Data Center to notify users by e-mail when anyone retrieves a file from an account. Technicians can take appropriate action if an unauthorized person retrieves files from a specific account.

You can enable e-mail notification at the community or subcommunity level. You cannot configure e-mail notification for specific Agent configurations.

NOTE:

Ensure that the DCAlerter service is running and configured with a valid e-mail server. For more information about how to configure the DCAlerter service, refer to Data Center Management Console Help.

To enable e-mail notification

1. Log on to Support Center.
2. Select a community or subcommunity.
3. Click **Tools > Email Notification**.

The Change Email Notification Status page opens.

4. Select the appropriate option and click **Save**.

For more information, see Support Center Help.

Technician accounts

Technician accounts let you control who has access to Support Center, and who has access to the Agent retrieve feature.

An administrator assigns the Support Center Administrator technician ID during the Data Center installation. The technician ID provides access to Support Center controls. Use this technician ID to create your subcommunities and other technician accounts.

If you want multiple staff members to use Support Center, create a technician account for each staff member. You can set permissions to control the level of access a technician has to Support Center features. For example, you might limit a technicians' access to specific communities.

To create a technician account

1. Log on to Support Center.
2. Select a community.
3. Select the **Technicians** node.
4. In the Add Technician page, enter the required information and select the permissions you want to assign to the account.
5. Click **Add Technician**.

For more information, see Support Center Help.

Licenses for Agent accounts

The Data Center licenses control the number of accounts that you can connect to a Data Center. They also enable licensed features such as MyRoam or Connected EmailOptimizer.

If you host your Data Center, you receive a license file to use when you install the Data Center. For more information, refer to *Installing the Data Center*.

If you back up your files to a Data Center that another company manages, one of the following can occur:

- Your top-level community inherits unused licenses from a parent community.
- The technician that manages the parent community allocates a specific number of licenses for your top-level community.

How licenses affect the Support Center display

Based on the types of licenses that you buy, Support Center displays the following configuration nodes in the left pane of the user interface:

Software Licenses	Version	Support Center display
PC and Mac Agents	8.3 and later	Configurations node, PC subnode, and Mac subnode
PC Agents	8.0 through 8.2.2	Configurations node, PC subnode
Legacy PC Agents	7.x and earlier	Legacy PC Configurations node

If you log on to Support Center and you or another technician changes the licenses, Support Center does not display the change in the left pane until you refresh the view or log into a new session.

For example, if you log on to Support Center and another technician removes licenses for PC and Mac Agents, you continue to see the **PC** and **Mac** subnodes under the **Configurations** node until you start a new session.

License inheritance and allocation

When you register an Agent in a community or subcommunity on the Data Center, the registration completes only if a license is available. Additionally, without an available license, the Agent cannot connect to the Data Center.

A technician can allocate licenses to subcommunities, or subcommunities can inherit licenses from a parent community. By default, lower-level communities inherit licenses from parent communities. For example, if your top-level node in Support Center has access to 1,000 licenses and you create two communities below the top-level node, each subcommunity has access to the 1,000 unused licenses in the parent community.

You can use license allocation to control the number of licenses to each community or subcommunity can access. For example, you have a total of 1,000 licenses available, and you have two communities: Operations and Engineering. If you expect the Engineering community to require more registered accounts than the Operations community, you can allocate 700 licenses to the Engineering community and 300 licenses to the Operations community. You can adjust the allocation of licenses at any time.

PC Agents and Mac Agents share the same license pool. For more information about license inheritance and allocation, see [License allocation examples, on page 35](#).

Used and unused licenses

The Data Center considers a license in use when any of the following conditions exist:

- Accounts register in a community.

For example, a community has access to 500 licenses and 100 accounts register in the community. The number of licenses in use for the community is 100 and the number of unused licenses is 400.

- You allocate a specific number of licenses to a subcommunity.

For example, your top-level community has 1,000 licenses available for use, and you allocate 600 of the licenses to a subcommunity. The number of licenses in use in the top-level community is 600 and the number of unused licenses is 400.

- Accounts register in a community and you allocate some of the licenses to a subcommunity.

For example, your top level-community has 1,000 licenses. A hundred accounts register in the top-level community, and you allocate 600 licenses to a subcommunity. The number of in use licenses is 700 and the number of unused licenses is 300.

Licensed features for communities

You can enable or disable the MyRoam and EmailOptimizer features for a selected community.

Feature state inheritance

Each feature in a community inherits its default state from the parent community. However, you can enable a feature in a parent community and disable the feature in its subcommunities. You also can disable MyRoam at the configuration level. For more information, refer to Support Center Help.

If you change the state of licensed features in a parent community, you affect its subcommunities in the following ways:

- If you disable licensed features in a parent community, you disable the features in its subcommunities. For example, you enable MyRoam in a subcommunity and disable MyRoam in the parent community. As a result, you also disable MyRoam in the subcommunity.
- Licensed features in subcommunities return to their previously set states if you re-enable licensed features in the parent community. For example, you disable a licensed feature in a subcommunity and in the parent community. You then re-enable the licensed feature in the parent community. As a result, you also re-enable the feature in the subcommunity.

For more information, see Support Center Help.

Expired licenses

When licenses expire, the following behavior occurs:

- If licenses in the Data Center License File expire, the Data Center server no longer accepts connections from Agents.
- If the licenses for a product type (PC or Mac) expire, the Data Center no longer accepts connections from those Agents.
- If licenses expire, new Agents cannot register in the Data Center.

- If a registered PC Agent attempts to back up files or retrieve files, and the licenses expire, the process fails. The History tab in the Agent User interface displays a failed event.
- If a user attempts to register an account with an expired license, the Account Management Website informs the user that the license is not valid.

To get more licenses, contact your Sales Representative.

Effect of licenses on accounts and communities

The availability of unused and unexpired licenses affect the following tasks:

- **Agent registration**

If no licenses are available in a community, or if the licenses expire, new Agents cannot register in the Data Center and the Account Management Website displays an error message. If the Agent cannot register an account, it cannot back up or retrieve files. To let new Agents register, buy or allocate additional licenses to the affected community.

- **Changing account status**

- If no unused licenses exist for the community in which an account is registered, you cannot change its status to Active or On Hold.
- If you change the status of an account to Canceled, the license that the account used becomes available. A new account can register and use this license.
- If you change the status for multiple accounts simultaneously, and you do not have an available license for every accounts in the group, the Data Center changes the status for only a subset of the selected accounts.
- The Data Center does not change the status for all accounts. The Results page in Support Center lists the changes that did not occur. For example, a community had five available licenses, and you tried to change the status of seven accounts. The status of two of the accounts remains the same.

- **Moving communities**

When you move communities from one location to another, the destination community must have a sufficient number of unused licenses for the communities that you move.

For example, you have a community named Accounting that has 500 licenses allocated for its use, and you want to move it to a new parent community named GlobalOperations. The GlobalOperations community must have at least 500 or more unused licenses to accommodate the Accounting community.

After you move a community, the licenses that it used become available to the original parent community and the moved community uses licenses that it obtains from its new parent community.

- **Moving accounts**

If you move an account from one community to a different community, the new community must have an unused license of the appropriate product type that the account can use. After you move the account, the license it used in the original community becomes available. The moved account uses a license from its new community.

If you move a group of accounts from one community to a different community, and the new community does not have enough licenses of the appropriate product type for all of the accounts, Support Center moves some accounts and displays a message that indicates that some accounts did not move. To move the remaining accounts, buy or allocate additional licenses to the community.

Manage licenses and licensed features

This section contains an example of license allocation. It also describes how to perform the following tasks:

- Allocate licenses.
- Enable or disable licensed features.

License allocation examples

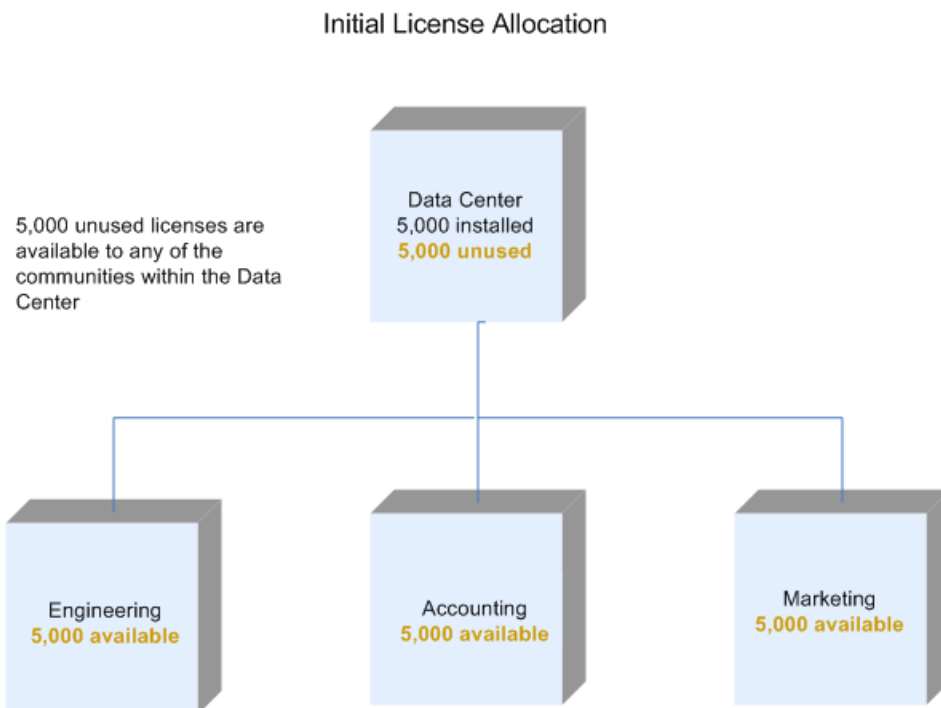
Assume that you host your Data Center. Your Data Center License File provides you with 5,000 account licenses.

After you install your Data Center, you create the following communities:

- Engineering
- Accounting
- Marketing

Inherited licences

Initially, all communities inherit the licenses. Because you have not yet explicitly allocated the licenses, each community has access to the 5,000 licenses. The following figure shows the initial license allocation.



As users register accounts in the individual communities or as you allocate licenses to other communities, the number of licenses in use increases and each community that inherits its licenses has access to fewer licenses.

For example, 100 accounts register in the Engineering community, and you do not explicitly allocate any licenses to other communities. You have 4,900 unused licenses to which all communities have access.

Allocated licenses

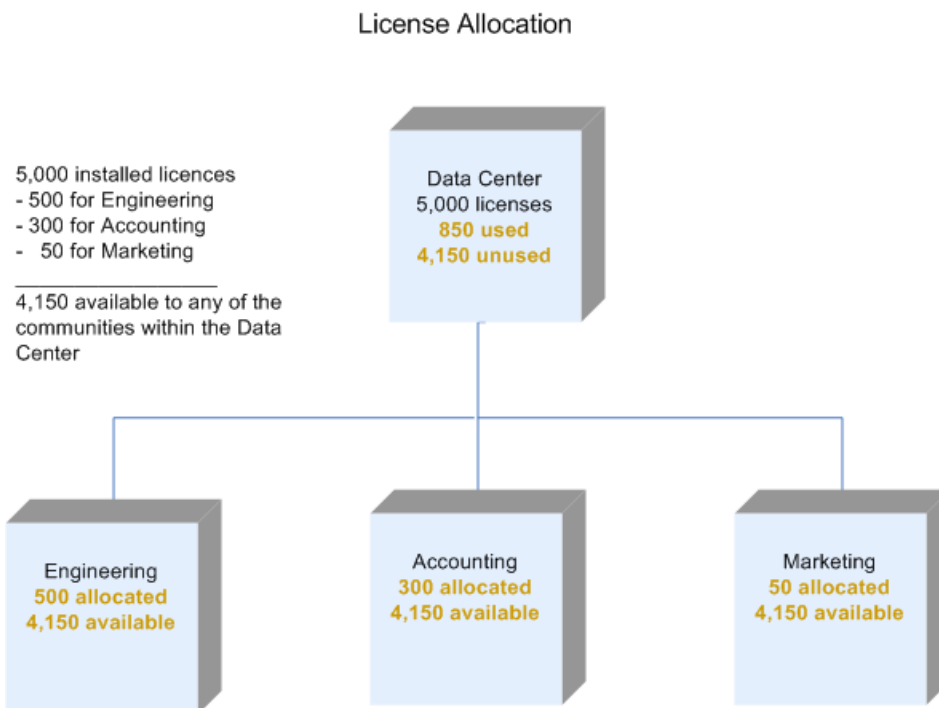
To control the use of licenses, and to avoid a situation where one community runs out of needed licenses, you allocate some of the licenses. In addition, your enterprise charges other enterprises for backup services, so you must control the number of licenses to which other enterprises have access.

You know the following information:

- The Engineering division has 500 client systems that must back up their data.
- The Accounting division has 300 client systems that must back up their data.
- The Marketing division has 50 client systems that must back up their data.

After you allocate required licenses to each division, you have 4,150 unused licenses and 850 licenses in use. In this example, a license is in use after you allocate it to another community. If you create another community and let it inherit licenses, it would have access to the 4,150 unused licenses.

The following figure shows the license allocation for this example.



Licenses allocated to subcommunities

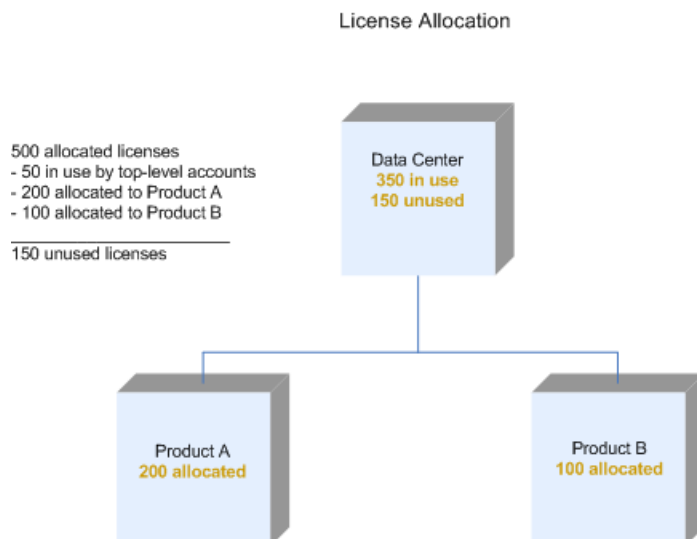
The Engineering division can create subcommunities and allocate licenses to these subcommunities. After you inform the Engineering division that their community is available, the administrator in the Engineering division divides the community into the following subcommunities:

- Product A
- Product B

Initially, the Engineering community and each subcommunity has access to the 500 allocated licenses, with the following use of licenses:

- Fifty accounts register in the top-level community. Each subcommunity now has access to 450.
- You allocate the remaining unused licenses as follows:
 - Product A receives 100 licenses.
 - Product B receives 200 licenses.

You have 150 remaining licenses. Up to 150 new accounts can register in the top-level community, or you can allocate any of these licenses to existing subcommunities or to a new subcommunity, or both, as shown in the following figure:



Allocate licenses

To make it easier to manage licenses, create different communities for different types of licenses. For example, create a community for Mac licenses, and a different community for PC licenses.

To allocate licenses

1. Log on to Support Center. Use a technician ID that has permissions to allocate licenses in sub-communities.
2. In the left pane of the Support Center interface, select a community or subcommunity.
3. On the Community Status page, click **Allocate Licenses**.

The Allocate License page opens.

4. Select the appropriate allocation options.
For more information, see Support Center Help.

5. To save your selections, click **Save**.

Support Center displays the following message:

The license allocation changes have been saved.

If you do not have permission to allocate licenses for a selected community, Support Center displays the View License Summary page instead of the Allocate Licenses page. You can use this page to view the current license allocation.

For more information, see Support Center Help.

Enable or disable licensed features

To manage licensed features

1. Log on to Support Center. Use a technician ID that has permissions to allocate licenses in sub-communities.
2. In the left pane of the Support Center interface, select a community or subcommunity.
3. On the Community Status page, click **Manage Features**.
The Manage Features page opens.
4. In the Manage Features dialog box, select the feature that you want to enable or disable, and then click **Save**.

Support Center displays the following message:

The Manage Feature changes have been saved.

For more information, see [Licensed features for communities, on page 33](#).

Apply bandwidth throttling during Agent backups

You can use the bandwidth throttling feature to limit the amount of network bandwidth that Agents use during backups. If you throttle bandwidth during Agent backups, you can allocate more bandwidth to other network activities and to user's Internet applications. When you use bandwidth throttling for Agent backups, backups are less intrusive, but take longer to complete.

NOTE:

- Bandwidth throttling applies only to Agents version 8.2 and later.
- Bandwidth throttling applies to only Agent backups. It does not apply to Retrieve operations.
- Set bandwidth throttling limits that are appropriate for your network. The Data Center does not check the available bandwidth of your network against the bandwidth throttling limits that you set in Support Center. If you set maximum bandwidth limits that exceed actual data transfer speed of your network, the bandwidth throttling does not reduce Agent intrusiveness during backups.

You can set the following bandwidth limits:

- Minimum bandwidth required for an Agent to perform a backup
- Maximum bandwidth to allocate to an Agent performing a backup
- Maximum bandwidth to allocate to all Agents performing backups

You also can establish a schedule to identify the peak, medium peak, and off peak network traffic times, and vary the bandwidth allocations accordingly.

You can configure bandwidth throttling at the Data Center level and the community level. At the Data Center level, you can choose whether to throttle bandwidth for all accounts that the Data Center manages. At the community level, you can choose whether to throttle bandwidth for the accounts in the

community, or you can choose to inherit the bandwidth throttling configuration (throttled or not throttled) from the parent community. When a subcommunity inherits bandwidth throttling from its parent community, and you specify a maximum shared bandwidth, the maximum shared bandwidth is shared among all Agents in the parent communities and any subcommunities that inherit bandwidth throttling.

To configure bandwidth throttling

1. Log on to Support Center.
2. In the left pane of the Support Center interface, select a community or subcommunity.
3. On the Community Status page, click **Bandwidth Throttling**.

The Bandwidth Throttling - Options page opens.

4. Select a bandwidth throttling option.

For more information, click **Help**.

5. Click **Save**.

Support Center displays the following message:

Your bandwidth throttling options have been saved.

For more information, see Support Center Help.

Chapter 3: Create Agent configurations

This chapter explains the components that make up an Agent configuration. It also explains how to create Agent configurations.

- [About Agent configurations, below](#)
- [Configuration components, below](#)
- [Create an Agent configuration, on page 43](#)

About Agent configurations

You create Agent configurations in Support Center to specify the features that are in the Agents that you deploy. Agent configurations also contain the settings and rules that control the behavior of an Agent after you install it on a client computer.

Support Center supports the following types of Agents:

- 7.x Legacy PC Agents
- 8.x or later PC Agents
- 8.3 or later Mac Agents

Configuration components

An Agent configuration contains the following components:

- Profile and Website settings
- Agent versions
- Agent settings
- Agent rule sets

Support Center compiles Agent configurations from a set of components that each specify some of the Agent features. You can gain access to the configuration information for each community.

To gain access to the configuration information for a community

1. Open Support Center.
2. In the left pane of the Support Center interface, under the name of the community in which the Agent resides, expand **Configurations**, and then expand **PC**.

The following sections describe the configuration components in detail.

Profile and Website settings

The Profile and Website settings determine the information and features that are available to users in the Account Management Website. They also determine the information that is in users' profiles, and the fields that are in the Agent Startup Wizard. In Support Center, the Profile and Website settings for each community appear in the **Configurations** node.

For more information about the Account Management Website, see [Deploy Account Management Website, on page 75](#).

For more information about Profile and Website settings, see Support Center Help.

Agent versions

Agent versions point to an Agent file set of a specific version and language. For example, you have an Agent version named Marketing PC. When a new version of the Agent software becomes available, you can download the new version and apply it to your deployed Agents.

For best practice, consider the following recommendations:

- When you create new Agent version in Support Center, do not include the version number in the name. For example, do not use Marketing versionX. Instead, use Marketing. If you include the version number in the name, the name becomes obsolete when you update the Agent version.
- Based on the needs of your organization, you might need to create one or more Agent versions. For example, you have computers in different departments with different backup requirements. You can create an Agent version for each department.
- You can use the same Agent version with several or all Agent configurations. When a new version of the Agent software is available, update only the Agent version and not every Agent configuration.

Agent settings

The Agent has optional features specific to your license agreement that you can enable or disable. Agent settings determine which features are accessible to the Agent user. The settings contain parameters that govern the Agent backup and retrieve features, such as the backup schedule and backup type. You also can enable security features such as proxy server settings and password protection of retrievals.

Agent rule sets

The Agent uses rule sets to determine which files to select during a backup. You can specify Agent rules in Support Center when you create or modify an Agent configuration.

Support Center includes a default rule set that you can associate with one or more PC Agent configurations. You also can create your own rule sets. If you let users modify their backup sets, they also can create rules that determine which files the Agent selects for backup. For more information, see [Create Agent rule sets, on page 47](#).

Default Agent configuration

The Support Center installation creates a default Agent configuration. The default configuration has a name similar to Default PC *version* Configuration, where *version* is the Agent version number. The default configuration resides at the root level of the tree in Support Center and is available to all of your communities. You might want to create your own configuration with a unique version, settings, and rules. However, you can use the default configuration as a reference when you create your own configurations.

For more information, see Support Center Help.

The default configurations contain the following components:

- Default Agent Version
- Default Agent Settings
- Default Agent Rule Sets
- Default Profile and Website Settings

Create an Agent configuration

Use Support Center to create the Agent configuration and its components. The technician ID that you use to log on to Support Center must include the **Modify Agent Configurations** permission.

To create an Agent configuration

1. Allocate licenses.
2. Create an Agent version.
3. Create Agent settings.
4. Create Profile and Website Settings.
5. Create an Agent rule set.
6. Create the Agent configuration.

The following sections describe these steps in greater detail.

NOTE:

Perform the steps to create an Agent configuration in the order in which the steps appear in the guide.

Allocate licenses

To create a new Agent configuration for a community, the community must have at least one available license.

To verify that a community has at least one available license

1. In the left pane of the Support Center interface, click the community node.
The Community Status page opens.
2. In the **Account Summary** section, look at the value in the **Unused** column for the **PC and Mac** license type and verify that at least one unused license is available.
If no licenses are available, you can change your license allocations.
3. To change your license allocations, click **Allocate Licenses**.
The Allocate Licenses page opens.
4. Select the appropriate allocation options.
For more information, click **Help**.
5. To save your selections, click **Save**.
Support Center displays the following message:
The license allocation changes have been saved.

Create an Agent version

To create an Agent version

1. Expand the **Configurations** node in the community where you want to create the configuration.
2. Expand the **PC** node.
3. Click **Agent Versions**.
The Create Agent Version page opens.
4. Enter the Agent version information.
Only PC Agent versions are available in the **Agent** drop-down list.
5. Click **Create**.
The Edit Agent Version - Description page opens.
6. Enter a description for the version, then click **Save and Deploy**.
The name of the Agent version appears in the left pane under the **Agent Versions** node.

Create Agent settings

To create Agent settings

1. Expand the **Configurations** node in the community where you want to create the configuration.
2. Expand the **PC** node.

3. Click **Agent Settings**.

The Create Agent Settings - General page opens.

4. Configure the Agent Settings.

For more information, click **Help**.

5. When you complete the Agent Settings, click **Finish**.

The name that you assigned to the setting appears in the left pane under the **Agent Settings** node.

Create Profile and Website settings

To create Website settings

1. Expand the **Configurations** node in the community where you want to create the configuration.

2. Click **Profile and Website Settings**.

The Create Profile and Website Settings - General page opens.

3. When you complete the Website settings, click **Finish**.

The name that you assigned to the setting appears in the left pane under the **Profile and Website Settings** node.

For more information, click **Help**.

Create an Agent rule set

To create an Agent rule set

1. Expand the **Configurations** node in the community where you want to create the configuration.

2. Expand the **PC** node.

3. Click **Agent Rule Sets**.

The Create Rule Set page opens.

4. Configure the rule set.

For more information, click **Help** on each page of the Rules wizard.

5. When you complete the rule set, click **Finish Rule Set**.

The name that you assigned to the rule set appears in the left pane under the **Agent Rule Sets** node.

Create the Agent configuration

To create a new Agent configuration

1. In Support Center, expand a community node, and then expand the **Configurations** node.
2. In the right pane, clear **Use inherited configuration settings**.

If you do not clear this setting, the configurations that you create for the community are inactive. That means that you cannot download an Agent Setup file from the community.

3. Click the **PC** subnode.
4. In the right pane, on the Configurations menu, click **Create**.
5. Enter a meaningful community name, such as "Finance Department."
6. From the drop-down lists, select the following:
 - An Agent version
 - Agent settings
 - Profile and Website settings
 - Agent rule set

Each list contains the components you previously created and the default components.

7. To create the configuration, click **Save and Deploy**.

After you create the Agent configuration, two things happen:

- The **Download** menu becomes available. If you want to distribute the Agent Setup file, use this menu to download it to your computer.
- If the Account Management Website is installed for your Data Center, a URL for Account Management Registration appears. Copy and send this case-sensitive URL to users whom you want to register and install an Agent account.

Chapter 4: Create Agent rule sets

This chapter explains the types of rules that the Agent uses to determine which files to include and exclude in backup. It also explains how to use Support Center to create rules.

- [Rule types, below](#)
- [The rule matching process, below](#)
- [Rule categories, on page 50](#)
- [Create rules, on page 51](#)

Rule types

The Agent uses rules to determine which files to include or exclude from backups and recoveries.

Rule types determine the order in which the Agent processes rules. The following table describes the rules types that the Agent uses and how they determine processing order:

Rule Types	Description
Locked	Rules that technicians define through the Support Center. Other types of rules cannot override locked rules. The Agent tries to match files with locked rules before it examines any other type of rule.
User-created	Rules that users define on their local Agent and associate with files on their local system. To define user-created rules, users must have permission to modify their backup sets. User-created rules do not override locked rules, but they override unlocked rules. The Agent tries to match files with user-created rules after it examines locked rules.
Unlocked	Rules that technicians define from the Support Center. Locked rules and user-created rules override unlocked rules. The Agent tries to match files with unlocked rules after it examines locked rules and user-created rules.

The rule matching process

The Agent processes rules according to the following factors:

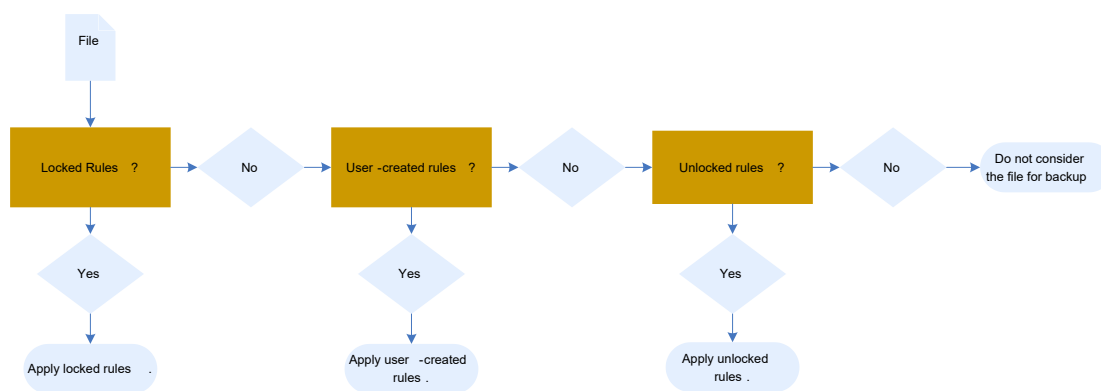
- **Rule logic.** The way the Agent processes each type of rule (locked, user-created, or unlocked). For more information about rule types, see [Rule types, on the previous page](#).
- **Rule precedence.** The position of rules in the rule list.

When the Agent scans a drive, it examines locked rules first. The Agent moves through the list of locked rules in top-down order until it finds a rule that applies to one or more files. You determine the precedence of rules in a list when you use the Support Center Rules wizard to create the rule set.

Rule logic

If the Agent matches a locked rule to a file or group of files, the Agent stops comparing the matched file or files to other rules. However, if the Agent cannot match a file to a locked rule, the Agent compares the file to user-created rules. If the file matches a user-created rule, the Agent stops comparing that file with additional rules. If the file does not match a user-created rule, the Agent continues to compare the file to unlocked rules. If the file does not match an unlocked rule, the Agent does not include the file in the back up.

The following figure shows the logic that the Agent follows to process rules:



For example, a user creates a rule that excludes all .mp3 files from backup. During a scan, the Agent compares the user's files against all of the locked rules in the rules set and finds no rule that pertains to .mp3 files.

The Agent then compares the user's files to the user-created rules. The Agent finds a rule that excludes all .mp3 files from backup. The Agent drops all .mp3 files from the backup list. The Agent then finds an unlocked rule that includes all .mp3 files in the backup. Because user-created rules take precedence over unlocked rules, the backup excludes .mp3 files.

The Agent uses the following process to determine which files to select for backups:

1. The Agent determines which drives to exclude from the backup set.

Users can use the Agent interface to exclude drives from backup. The Agent does not scan these excluded drives. Excluded drives do not show up on the Backup Set tab in the Agent User interface.

2. The Agent tries to match files to rules based on rule type.

The Agent examines rule types in the following order:

- a. Locked rules
 - b. User-created rules
 - c. Unlocked rules
3. When the Agent scans the hard drive, the Agent tries to match files to the list of rules under each rule type.

The Agent examines the first rule in the list of files for each rule type. It compares the rule definition to the file location, name, and type.

If the file does not match this rule, the Agent examines the next rule in the list. The Agent continues this process until it finds a rule that matches the file. After the Agent finds a matching rule, it uses the rule category type to classify the file as user-created files, application or system files, or an excluded file. Based on the rule type and how you configure the Agent, the Agent selects or does not select a file for backup.

If a file does not match any rules, the Agent does not consider the file for backup.

Rule precedence

Assume that you want to create a set of locked rules that cause the Agent to select most files with a .doc extension for backup and not select files that start with the letter x. The following figure illustrates how the order of rules results in different behaviors:

LOCKED RULES FOR RULE SET 1		LOCKED RULES FOR RULE SET 2	
First Rule:		First Rule:	
Category	User-Created Files	Category	Exclusions
Rule Name	Include x*.doc files	Rule Name	Exclude x*.doc files
Folder	*	Look in Folder	*
Scope	All folders and subfolders	Scope	All folders and subfolders
File name	*	File name	x*
File types	doc	File types	doc
Second Rule:		Second Rule:	
Category	Exclusions	Category	User-Created Files
Rule Name	Exclude x*.doc files	Rule Name	Include x*.doc files
Folder	*	Folder	*
Scope	All folders and subfolders	Scope	All folders and subfolders
File name	x*	File name	*
File types	doc	File types	doc
<p>In this example, all files with the .doc extension match the first rule in the list of locked rules. The Agent does not compare any of the files with the .doc extension to the second rule.</p> <p>Using these rules, the Agent selects all files with a .doc extension. Because all of these files match the first rule, the Agent does not apply the second rule to files with a .doc extension.</p>		<p>In this example, all files that start with x and have a .doc extension match the first rule in the list of locked rules. The Agent does not select any of these files for backup.</p> <p>Using these rules the Agent selects only the files that do not start with x and have a .doc extension.</p>	

Rule categories

Rule categories determine whether the Agent considers files for backup. For more information, see Support Center Help. The following table describes each rule category:

Rule Category	Description
User-Created Files rules	Include user-created files, such as spreadsheets and documents, in

Rule Category	Description
	backups.
System or Application Files rules	Rules that pertain to system and application files.
Exclusion rules	Exclude files from backups. NOTE: If you exclude a file from a backup, you cannot retrieve it.

Create rules

You can create rules in the following ways:

- Use the Agent Rules Wizard in the Support Center to modify a default rule set and save it under a new name.
- Use the Agent Rules Wizard in the Support Center to create a new rule set without using a default set as a template.
- Use the Agent User interface.

Best practices for creating rules

When you create rules, consider the following best practices:

- Consider the types of files that you want to select for backup, and determine which rule category applies to the files. For example, you want the Agent to back up all .mp3 files. Because .mp3 files are files that users create, you must create User-Created Files rule to include .mp3 files in backups.
- Do not rely on the absence of a rule to exclude a file from backup. To exclude files from backup, create an exclusions rule to specify the exclusion. For example, assume you are a technician who wants to exclude all .mp3 files from backups. Because the Agent does not consider files for backup unless the file matches a rule, you decide that you can exclude .mp3 files from backup if you do not create a rule for them. However, a user creates a rule that specifies .mp3 files for backup. As a result, the Agent backs up the user's .mp3 files. To ensure that the Agent does not back up .mp3 files, create a locked exclusions rule.

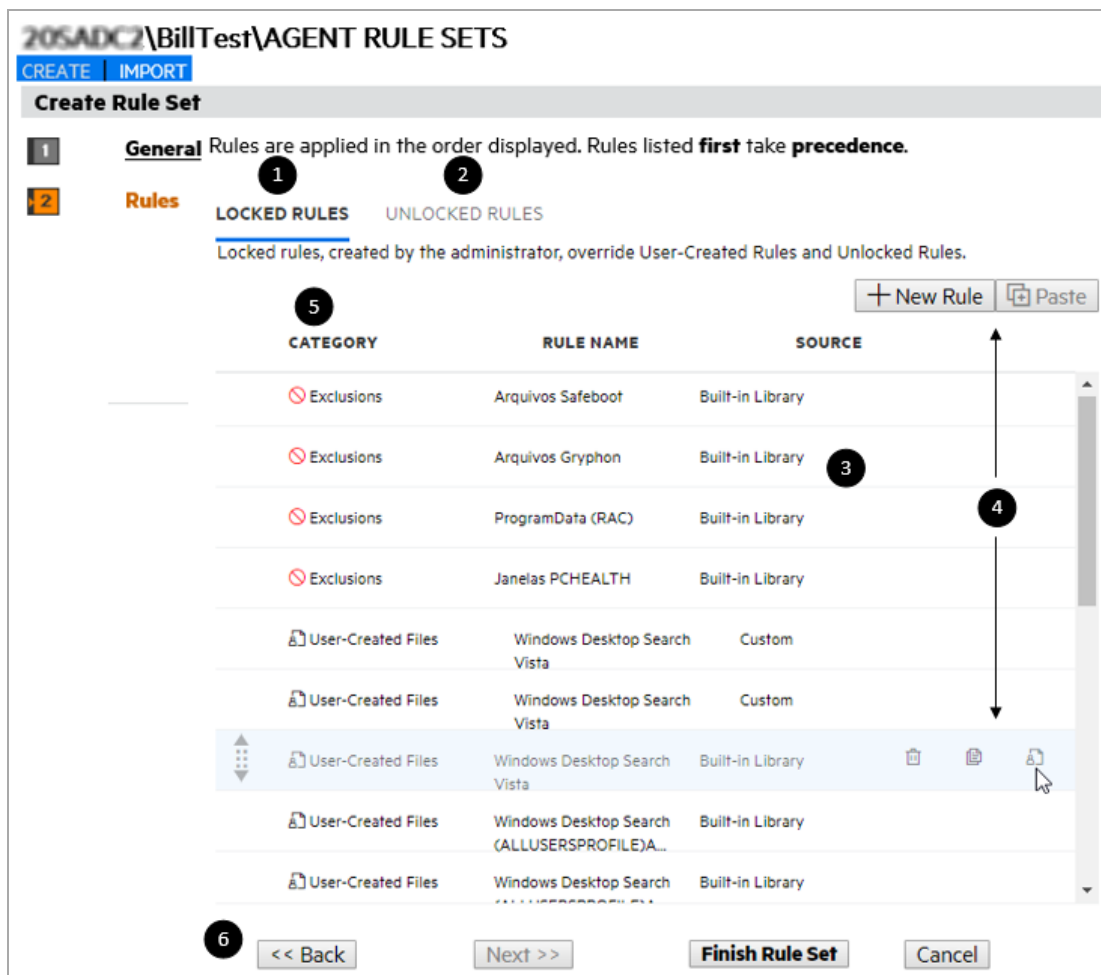
Use rule sets

Rule sets are collections of rules. You can create rule sets for different organizations, locations, or types of computer users. For example, you create a rule set for Corporate Engineering that specifies which files you want the Agent to back up and which files you want the Agent to exclude. Every Agent

contains default rule sets. You can use the default rule sets as they are or as a starting point to create custom rule sets.

Rules page

After you open the Agent Rules Wizard in Support Center and enter general properties for a rule set, you can enter rule definitions in the Rules page. The following figure is an example of the Rules page:



The following table lists the elements in the Rules page:

Element	Description
①	Locked Rules tab. Lists rules that the Agent evaluates before all other types of rules. Users cannot use the Agent interface to modify locked rules.
②	Unlocked Rules tab. Lists rules that the Agent evaluates after it evaluates locked rules and user-created rules. Users cannot use the Agent User interface to modify unlocked rules, but they can create user-created rules that override unlocked rules.

Element	Description
3	Rules list. Lists the rules for the selected rule type.
4	Rule editing buttons and icons <ul style="list-style-type: none"> • New. Opens the New Rule window. Use this window to specify the details for the new rule. When you save the rule, the Rules wizard places the new rule at the end of the list. • Edit. Opens the Edit Rule window. Use this window to change the details of an existing rule. • Convert to Custom. Lets you create a copy of a built-in rule that you can modify. • Cut. Lets you remove rules from the current rule set and put them in the Support Center clipboard. You can paste these rules into another rule set. • Copy. Makes a copy of the selected rules and puts them in the Support Center clipboard. You can paste these rules into another rule set or move a group of rules to a different location in the current rule set. • Paste. Puts the rules in the Support Center clipboard into the current rule set. • Remove. Permanently deletes a rule from the current rule set. Support Center does not put the rule in its clipboard.
5	Details of selected rule. The rule definitions that the Agent uses to match rules with files. The Agent uses the Category detail to determine which files to select based on the backup type.
6	Rule set buttons <ul style="list-style-type: none"> • Back. Opens the Rule Set - General page. • Next. Not used on this page. • Finish Rule Set. Saves the current rule set. The Rules wizard displays this button if you have permission to modify the rule set. • Close. Closes the window.

Use the Agent Rules wizard

To create, edit, or remove rule sets and rules, use the Agent Rules wizard. For more information, refer to Support Center Help.

To use the Rules wizard

1. Log on to Support Center.
2. Select a community where you want to create or edit a rule set.
3. Expand the **Configurations** node and expand the **PC** subnode.

4. Complete one of the following tasks:

- To create a new rule set
 - a. In the left pane, select **Agent Rule Sets**.
The Create Rule Set page of the Rules wizard opens.
 - b. Use the Rule Set - General page to specify a name for the rule set and the drives that you want the Agent to exclude.
- To modify a rule set
 - a. Expand the **Agent Rule Sets** node and select the rule set that you want to modify.
The View Rule Set page of the Rules wizard opens.
 - b. Save the rule set under a different name, and then follow the Rules wizard to edit or remove rules in the rules list.

5. To save all of the new or modified rules in the rule set, click **Finish Rule Set**.

Smart scan rule

The smart scan is an optimization mechanism in addition to existing scanning feature with the purpose of reducing the memory footprint of client application that runs on the end point machines. To activate the smart scan, a smart scan rule needs to be defined and it is similar to any other technician rule with some additional conditionals. The rules that are set as part of the smart scan results in reduced memory consumption by making the scanning process easier and more memory-efficient. There are scenarios where a smart scan can be activated, for instance, consider an end user machine containing large number of files that are not part of the backup set (files that users do not typically need to backup or restore), in this case, you can apply the smart scan to exclude those folder locations from being scanned by the Agent. The smart scan rule has top most priority and supersedes all the other existing rule types.

Before you begin to create a smart scan rule, ensure the following:

- Applicable on Microsoft Windows (PC Agent) only.
- Only the absolute path is accepted as part of smart scan rule.
 - No wildcard entry is supported, such as , '*' or '\$' as part of folder location.
 - Rule cannot be specific to certain file extensions.
 - Rule cannot be pointing at specific file, it must be a folder location.
- Rule can only be set by a technician in the Support Center.
- Currently, there are 3 types of scans used on the PC Agent : MFT scan, Folder scan, and Filter Driver Scan. This rule in specific supports MFT scan only.
- Rule can be part of either **Locked** or **Unlocked** rule set.
- Rule in the **Category** field must be of the type **Exclusion** only.
- Regardless of which option (either Exclude or Include subfolders) is selected in the **Scope** field, the smart scan rule excludes all the files in the specified folder and all of its subfolders.

- Rule is prefixed with the keyword "**SMARTSCAN**" in the **Rule Name** field. It is not case sensitive and supports only English language.

The following example shows how to create a smart scan rule that an Agent uses to select all files in a specific folder and its subfolder to exclude.

Rule description

The smart scan rule has the following definition:

Category	Exclusion
Rule Name	SmartScan large file set
Folder	C:\Windows\report
Scope	Exclude subfolders
File name	*
File type	*

Rule description

The files that match this rule include:

- All files that reside in the following absolute path or its subfolder:

C:\Windows\report

- The Agent uses the **Folder** and **Scope** definitions to determine the locations to examine. In this rule, the absolute path indicates the location that the Agent should examine. Regardless of the option selected in the **Scope** definition, the smart scan rule indicates the Agent to exclude all the files in the specified folder and all of its subfolders.
- The Agent uses the **File name** and **File type** definitions to determine which files to exclude from a backup. The wildcard characters in this rule indicate that the Agent should select all file names and types in the absolute path to exclude.

NOTE: Rule must contain only "*" as the wildcard character in the **File name** and **File type** fields.

After matching files with this rule, the Agent uses the category definition to classify the files that match this rule as files to exclude from backup. Therefore, the smart scan will not scan the excluded folder as they do not require a backup.

NOTE:

Smart scan is used only to improve the scan memory usage, but not the scan time.

If multiple smart scan rules are defined then unlike other technician rules, the Agent does not apply rule category based on priority to the list of locked or unlocked rules as it is not applicable in the smart scan rule. Therefore, all the smart scan rules that are defined will fall under the same group.

IMPORTANT: The files that are excluded as part of the smart scan does not appear on the Backup pane of the PC Agent interface. Although the top-level excluded folder name appears on the PC Agent interface, its contents are displayed as empty.

Chapter 5: Agent security features

This chapter explains how the Agent security features ensure that unauthorized users do not intercept and decode files while they travel between the Agent and the Data Center.

- [Encryption, below](#)
- [Access Control List management, below](#)
- [Unauthorized access prevention, below](#)

Encryption

When you register an Agent, the Agent generates an encryption key (a random alphanumeric string) and stores it locally on the Agent host computer. The Agent does not store the encryption key in clear text. Instead, the Agent applies 128-bit Advanced Encryption Standard (AES) encryption to the key. You cannot change the level of encryption that the Agent uses to encrypt the key.

During Agent registration, the Agent uses Secure Sockets Layer protocol (SSL) to securely transmit the encrypted key to the Data Center. The Data Center escrows the key, in encrypted format, on its Data Center server so that you can recover the key if you need to fully recover the Agent account.

Before the Agent performs a system backup, it uses the encryption key to encrypt the files in the backup set. This ensures that hackers cannot intercept and decode the files while they travel between the Agent and the Data Center during the backup. The files remain encrypted on the Data Center. When the Agent initiates a retrieval, the Data Center sends the encrypted files to the Agent. When the Agent receives the files, it decrypts them and then downloads them to the client computer. Because the Agent stores the encryption key locally, only the Agent that encrypted the files can decrypt them.

Access Control List management

Administrators can apply different file permissions and extended attributes to accounts to limit the access that non-administrative users have to files, folders, and drives. If configured to do so, the Agent backs up file permissions and extended attributes that are on the client computer and retrieves them along with the files the user requests.

When Agents retrieve files for computers, they reapply the file permissions and extended attributes so that only authorized users can view the files. If you have computers in your organization that multiple users share, the Agent installed on a computer can back up and retrieve files for all of the users. However, it does not let users retrieve files for which they do not have file permissions. The Agent also backs up the Encrypting File System (EFS) attributes of files on servers.

Unauthorized access prevention

This section describes Agent features that prevent unauthorized access to files.

Security certificates

To prevent unauthorized access to files during transmission from the Agent to the Data Center, Data Center Setup embeds a security certificate in the Agent. The Agent uses the security certificate to authenticate the Data Center server to perform the following tasks:

- Registration
- Upgrade
- Backup
- Retrieve
- Edit Profile

Password protection for retrieval

To prevent unauthorized access, you can require users to supply a technician ID and password to retrieve a file.

When you create Agent configurations, enable password protection for the retrieve feature. If you enable this feature, users must enter their account password to retrieve files.

For more information, see Support Center Help.

Prevent access to files on a lost or stolen computer

To prevent access to files on a lost or stolen computer

1. Recover the Agent account to a computer that has a name that is different from the lost or stolen computer.

The Data Center prevents access to accounts from more than one computer name. Restoring the account to a replacement computer with a name that is different from the lost or stolen computer ensures that the account is protected.

2. To allow a computer name change, do the following:
 - a. Open Support Center.
 - b. Search for the Agent account.
 - c. When Support Center displays the search results, click the account number in the Account column.
 - d. Select **Tools > Allow Computer Name Change**.

The Allow Computer Name Change page opens.
 - e. Click **Allow Change**.

This procedure deletes the computer name that is associated with the account. The next time the Agent runs a backup, the Data Center recognizes that the account moved to a new computer.

3. Restore the account data.
4. Use Support Center to cancel the account from the lost or stolen computer, and remove the old account data from the Data Center server.

Chapter 6: Brand product components

This chapter explains how to use Support Center to brand the Agent software, Support Center, and the Account Management Website.

- [Branding overview, below](#)
- [Branding options for Agents, on page 63](#)
- [Branding options for Support Center, on page 68](#)
- [Branding Options for the Account Management Website, on page 70](#)
- [Brand product components, on page 71](#)

Branding overview

You can brand the product in the following ways:

- Replace the default Micro Focus product branding with your company branding.
- Display your company branding but retain the Micro Focus logo.
- Remove the default Micro Focus logo so that it is not displayed with your company branding.

You can brand the following product components:

- Agent
- Support Center
- Account Management Website

If you host your Data Center and have access to the top-level community, you can brand the entire Data Center. If you do not host your Data Center, you can use a technician ID to brand any community or subcommunity that to which you can gain access.

If you host your Account Management Website, you can brand the entire Website.

Agent branding options

You can brand the following components in the following ways:

Component	Description	Branding options
Agent installation program	The program that installs the Agent.	<ul style="list-style-type: none">• Product name• Default installation folder where the Agent Setup executable installs the

Component	Description	Branding options
		Agent software <ul style="list-style-type: none"> • Product group location • Micro Focus logo
Agent splash screen	The window that opens when you start your computer.	Product logo
Agent User interface	<p>The application that lets you perform backups, retrievals, and otherwise manage your Agent account. The Agent User interface includes the following components:</p> <ul style="list-style-type: none"> • Agent Startup Wizard • Welcome to the Agent window • Enter Password dialog box <p>Used only by accounts that are not mapped to single sign-on (SSO) accounts. Agent branding does not affect the corporate sign in page for SSO accounts.</p> <ul style="list-style-type: none"> • Synchronizing screen • Agent console • Agent About window • Shortcut menu for the Agent Status icon in the system tray 	<ul style="list-style-type: none"> • Product name • Product logo for the following components: <ul style="list-style-type: none"> ◦ Agent console ◦ Agent About window ◦ Micro Focus logo
Desktop elements	<p>The following elements on the Windows desktop:</p> <ul style="list-style-type: none"> • Agent Desktop shortcut icon • Agent Add/Remove programs entry • Windows Start menu executable 	<ul style="list-style-type: none"> • Product name • Micro Focus logo
Windows registry	<p>Branding appears in the Windows registry under ...Connected\custom_name for the following registry keys:</p> <ul style="list-style-type: none"> • TargetDir • AppSetupMSIName 	<ul style="list-style-type: none"> • Product name • Micro Focus logo

NOTE:

The branding-related keys are in the following registry location, based on the Agent operating system:

- 32-bit: **HKEY_LOCAL_MACHINE\SOFTWARE\Connected**
- 64-bit: **HKEY_LOCAL_MACHINE\SOFTWARE\Wow6432Node\Connected**

Support Center branding options

You can brand Support Center in the following ways:

Component	Description	Branding options
Sign In dialog box	The dialog box that lets you enter credentials to sign in to Support Center	<ul style="list-style-type: none">• Product image• Micro Focus logo
Change Password dialog box	<p>The dialog box that lets you change the password that you use to sign in to Support Center</p> <p>This dialog box is used only by accounts that are not mapped to single sign-on (SSO) accounts. Support Center branding does not affect the corporate sign in page for SSO accounts.</p>	<ul style="list-style-type: none">• Product image• Micro Focus logo
Application header	The header that displays at the top of all application pages	<ul style="list-style-type: none">• Product image• Micro Focus logo

Account Management Website branding options

You can brand the Account Management Website in the following ways:

Component	Description	Branding options
Account Management Website	<p>The web-based application that lets users perform the following tasks:</p> <ul style="list-style-type: none">• Register a new account and download the Agent software• View account information• Modify profile information• Recover accounts• Use MyRoam to retrieve files	<ul style="list-style-type: none">• Web site name• Product logo on the Web site• Micro Focus logo

Component	Description	Branding options
	<ul style="list-style-type: none">Order backed-up files on media <div>NOTE: AMWS branding does not affect the corporate sign in page for SSO accounts.</div>	

Branding options for Agents

You can brand the following elements in the Agent User interface:

- Splash screen
- Agent installer windows
- Agent user interface

Brand the Agent splash screen

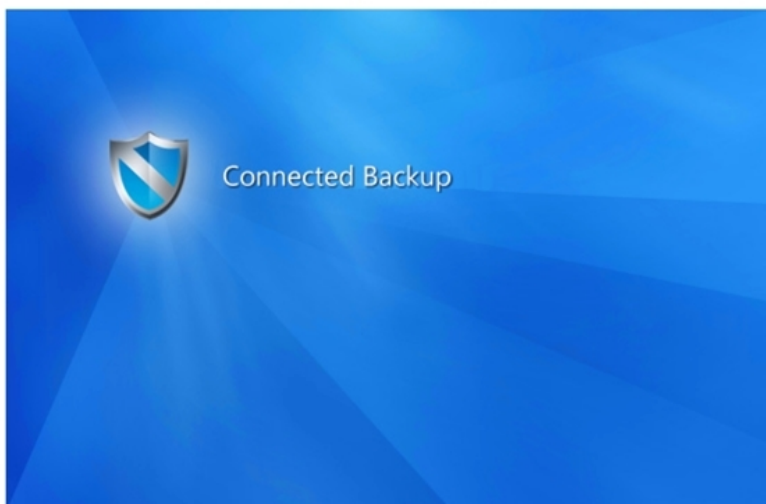
The following figures show the elements that you can brand on the Agent splash screen.

- For pre-8.8 Agents, your product logo is inserted into the default splash screen.

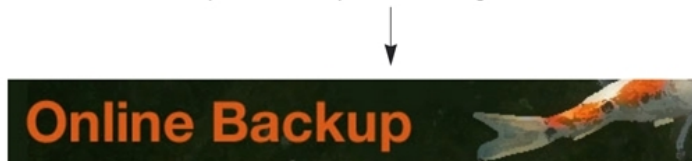


- For 8.8 Agents and later, your product logo replaces the default splash screen.

The default product splash screen for Agents 8.8 and later



Example of a custom splash screen for Agents 8.8 and later.



NOTE:

Regardless of which Agent versions you support, the product splash screen logo must adhere to the following requirements.

Format: PNG (Portable Network Graphics).

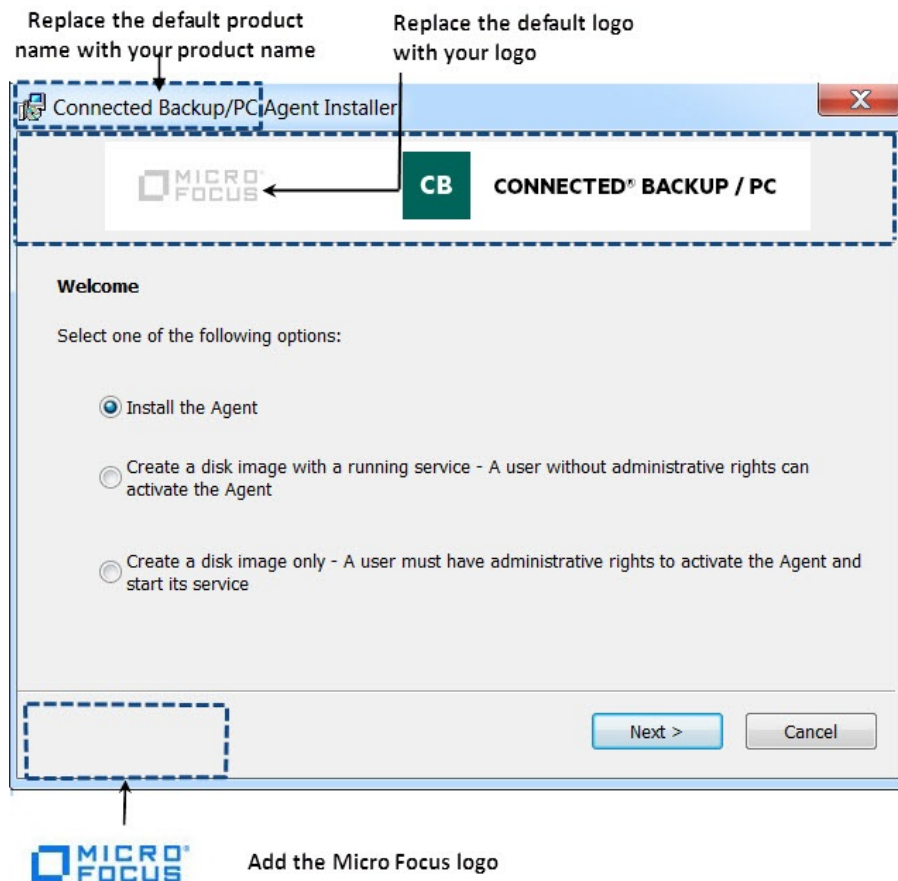
Size: 522 pixels wide by 74 pixels high.

Background: Transparent or white.

For more information, see [Requirements for Agent graphics, on page 71](#).

Branding in the Agent Installation wizard

The Installation Wizard guides you through the installation of the Agent. The following figure shows the elements that you can brand in the Installation Wizard:



NOTE:

Your logo must be the same size as the logo in the previous figure. The logo image file is a composite of the logo over a white background.

If your logo image file is too large, the title text (in this example, the word "Welcome") might appear on top of the logo image.

For more information, see [Requirements for Agent graphics, on page 71](#).

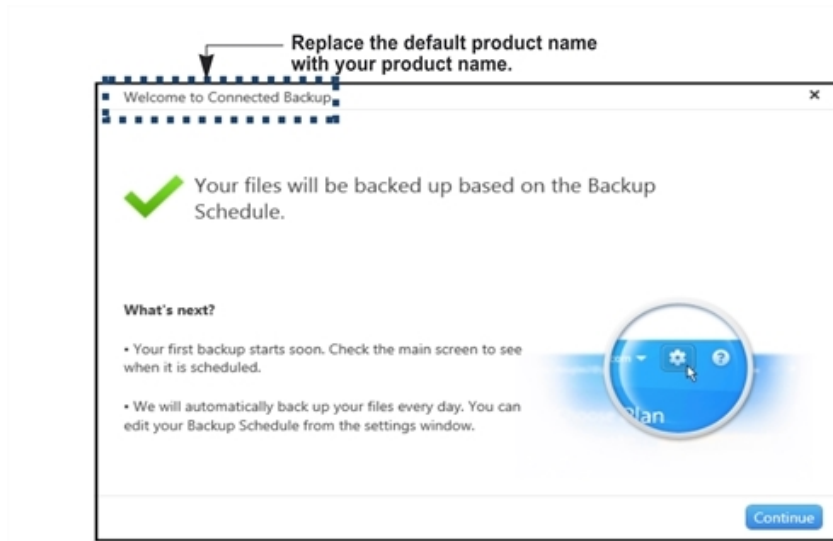
Branding options in the Agent User interface window

The following sections describe the elements that you can brand in the Agent user interface. The Agent user interface includes the following components:

- Welcome to the Agent window
- Enter Password dialog box
- Synchronization window
- Agent console

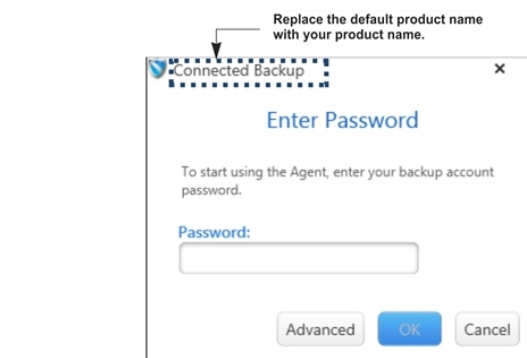
Brand the Welcome to the Agent window

The following figure shows the elements that you can brand in the Welcome to the Agent window:



Brand the Enter Password dialog box

The following figure shows the elements that you can brand in a typical Enter Password dialog box, which is used only by accounts that are not mapped to single sign-on (SSO) accounts:

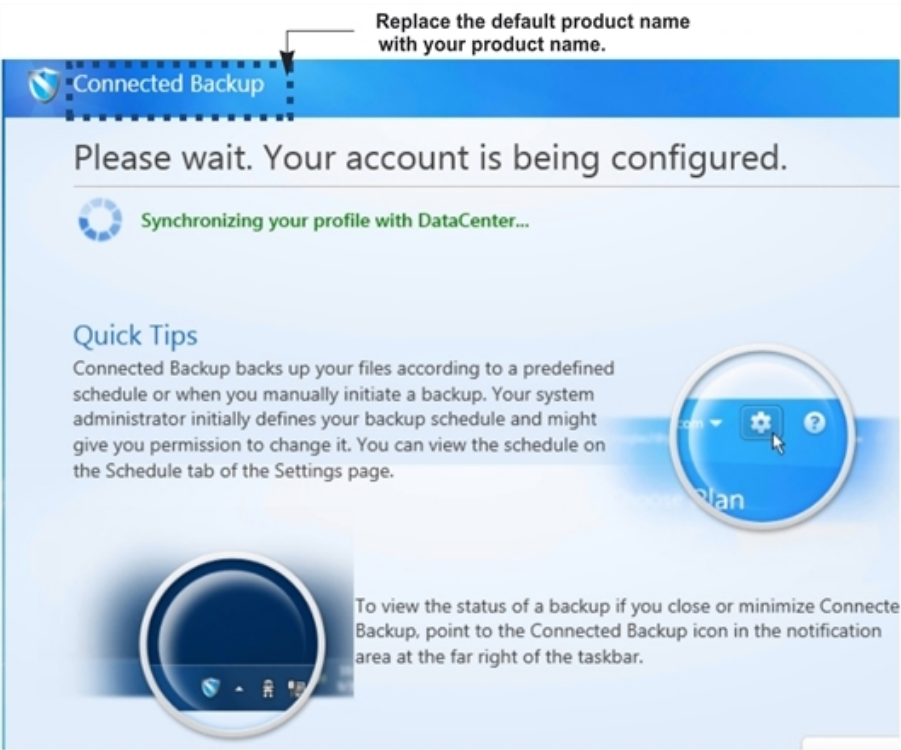


NOTE:

Agent branding does not affect the corporate sign in page for SSO accounts.

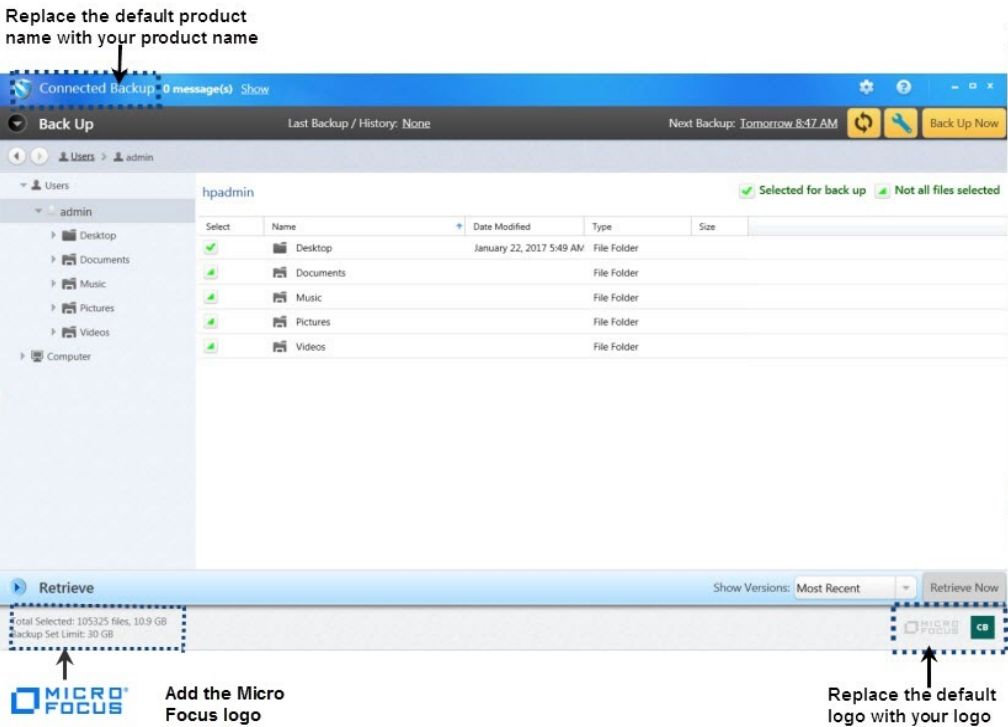
Brand the Synchronizing window

The following figure shows the elements that you can brand in the Synchronizing window:



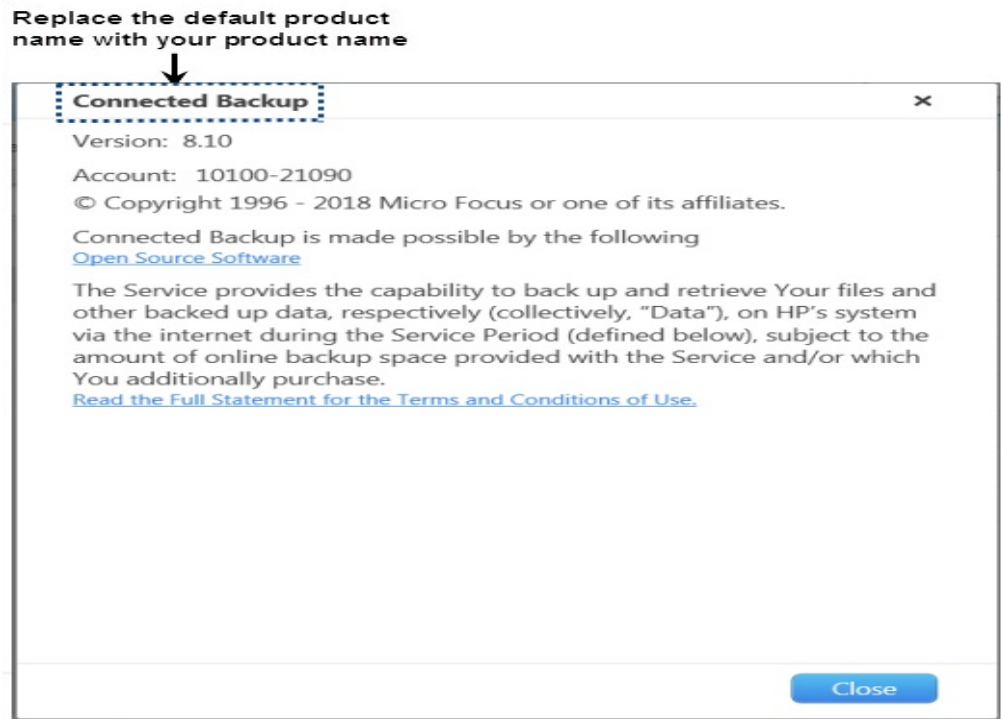
Brand the Agent console

The following figure shows the elements that you can brand in the Agent console:



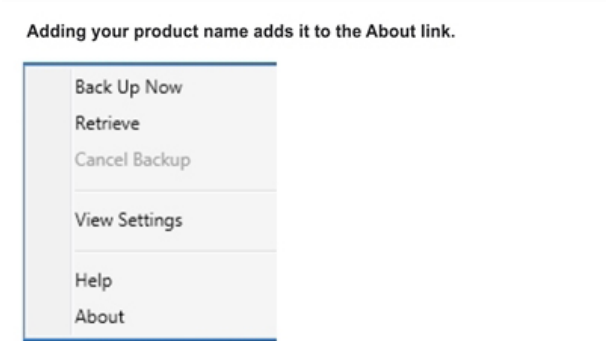
Brand the About window

The following figure shows which elements you can brand in the Agent User interface About window.



Brand the Shortcut Menu for the Agent Status icon

You can configure Agents to show the Agent Status icon. The following figure shows how you can brand the shortcut menu for the icon:



Branding options for Support Center

You can brand the following Support Center elements:

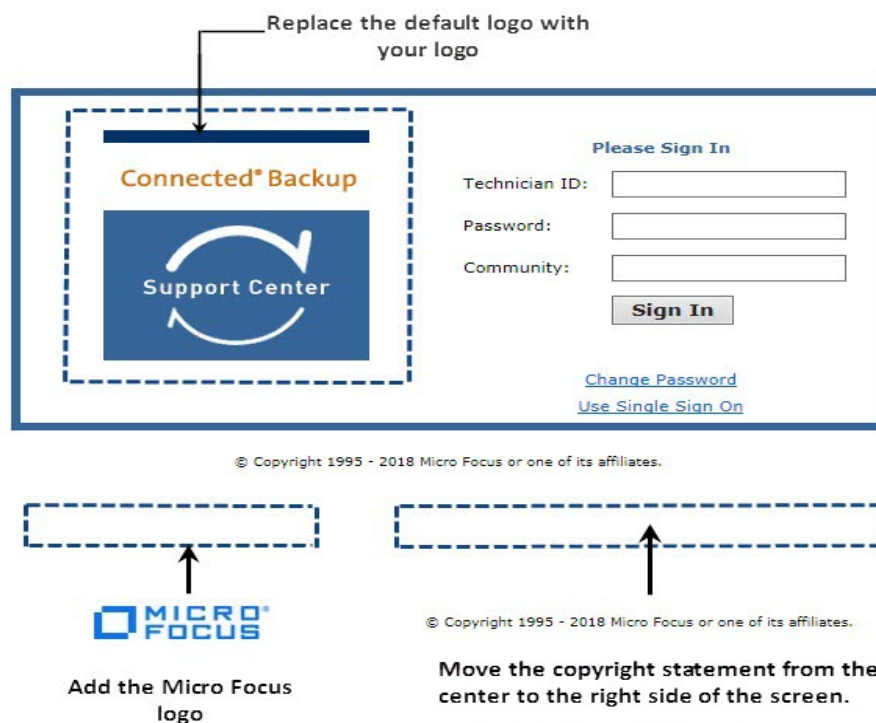
- Sign In page
- Change Password dialog box
- Support Center interface

Inherited branding

When you brand a community, all of its subcommunities inherit the branding. However, you can brand a subcommunity differently than its parent community. For example, you brand a top-level community to match the corporate branding standards. You can brand a subcommunity under your top-level community to match the branding standards of a wholly-owned subsidiary of your enterprise.

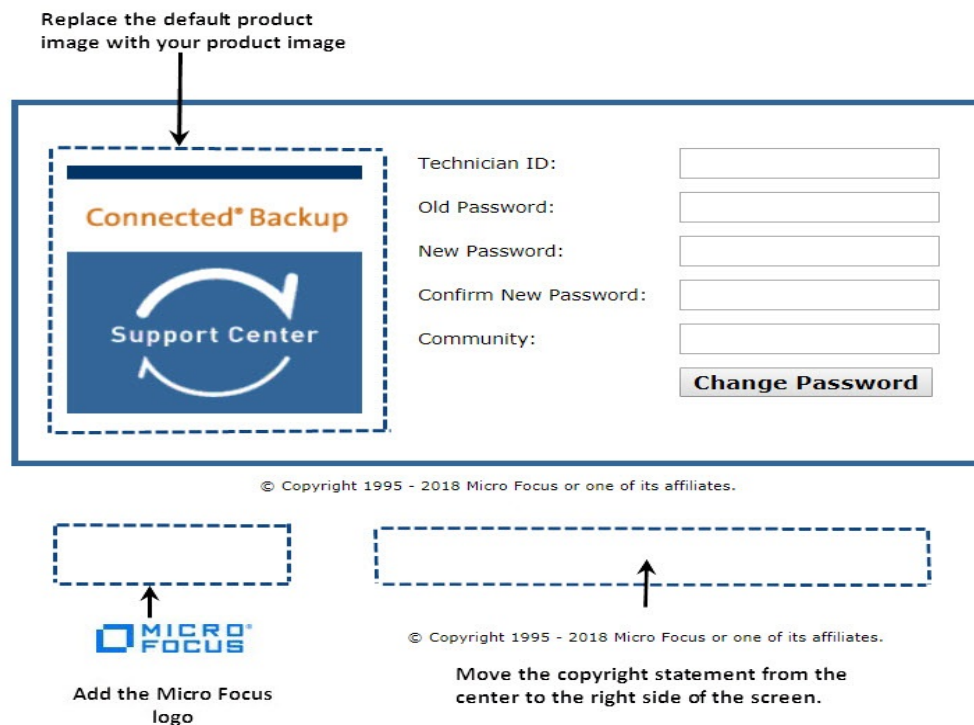
Brand the Support Center sign in page

The following figure shows which elements you can brand in the Support Center sign in page:



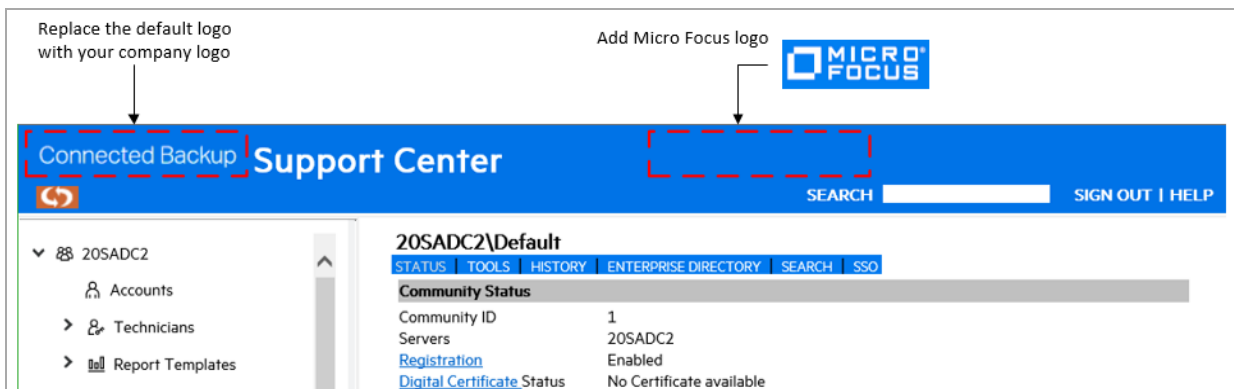
Brand the Change Password Dialog Box

The following figure shows which elements you can brand in the Change Password dialog box:



Brand the Support Center Interface

The following figure shows which elements you can brand in Support Center:



Branding Options for the Account Management Website

You can brand the following elements in the Account Management Website:

- Logos
- Website name

Brand product components

This section explains how to brand Connected Backup product components. It also describes the requirements for branding graphic elements.

Requirements for Agent graphics

The following table lists the requirements for each graphic element that you can brand.

Branded graphic element	Requirements
Product logo in the Agent User interface (includes the About window)	Format: PNG (Portable Network Graphics). Size: 256 pixels wide by 40 pixels high. Background: Transparent or white.
Product logo in the Agent splash screen Image inserts into default Agent splash screen (pre-8.8) or replaces entire default splash screen (8.8 and later).	Format: PNG (Portable Network Graphics). Size: 522 pixels wide by 74 pixels high. Background: Transparent or white.
Product logo in the Agent installation program	Format: JPEG (Joint Photographic Experts Groups). Size: 500 pixels wide x 63 pixels high. Background: White.

Because of different graphic arrangements between Agent versions, do not use images that you create for version 8.4 and higher Agent installation program windows for earlier Agent versions. The Support Center Branding page lets you choose between two images: one for a version 8.4 or higher Agent, and one for Agents earlier than version 8.4.

For more information, refer to Support Center Help.

If you do not specify an image for the installation program windows, Support Center applies the default product logo.

Requirements for Support Center graphics

The following table lists the requirements for each graphic element that you can brand in the Support Center application:

Branded graphic element	Requirements
Product logo in Support Center	Format: GIF (Graphics Internet Format). Size: 159 pixels wide by 40 pixels high. Background: Transparent or white. Recommendation: Center the logo within the 159 by 40 pixel image to ensure the appearance is balanced.
Product logo in the Support Center logon page	Format: GIF (Graphics Internet Format). Size: 170 pixels wide by 181 pixels high. Background: Transparent or white. Recommendation: Include the phrase, "Support Center" as part of the image.

Requirements for Account Management Website Graphics

The following table lists the requirements for each graphic element that you can brand in the Account Management Website:

Branded graphic element	Requirements
Product logo in the Account Management Website	Format: PNG (Portable Network Graphics). Size: 356 pixels wide by 69 pixels high. Background: Transparent or white. For best results, use white.

Technician account requirements

To use the branding feature, use a technician account that has Apply Branding and Manage Digital Certificates permission enabled.

For more information about setting permissions for technician accounts, refer to Support Center Help.

Start the branding process

To start the branding process

1. Ensure that you have correctly sized image files for each component that you want to brand.

The image files for the Agent must be in PNG format. The image files for Support Center must be in GIF format. The image files for the Account Management Website must be in PNG format. The Apply Branding page specifies the format that is required for the elements that you can brand.

2. Log on to Support Center. Use a technician ID that has the Apply Branding and Manage Digital Certificates permission enabled.
3. If you use central administration to update deployed Agents, disable it until you verify the appearance of the branded Agents.

For more information, refer to Support Center Help.

4. Select what you want to brand, for example, the Data Center node (if you have permission to gain access to this node), or a community that you want to brand, or a community with Agent configurations that you want to brand.
5. Click **Tools > Apply Branding**.

The Apply Branding page opens.

6. Enter the required information and click **Apply**.

Support Center displays the following message:

Community Successfully Branded. New branding settings were applied to the community. Any subcommunities without customized branding will use this community's branding. The dctomcat service can now be restarted to see any changes to Account Management branding, otherwise branding changes will refresh automatically in five minutes.

7. To close the message, click **OK**.

For more information about how to use the Apply Branding page, see Support Center Help.

NOTE:

To brand Agents that are already deployed, you must perform one of the following procedures:

- Use Support Center to enable Central Administration. When you change the branding of an Agent community, the next time an Agent in the community synchronizes with the Data Center during a backup, the Agent receives the new branding. For more information, see *Installing Agents*.
- Use the Agent Installation command-line interface to upgrade Agents with an Agent Setup file that contains new branding. For more information, refer to *Installing Agents*.

Gain access to branding communities

If you brand Support Center at the Data Center level (if you host your Data Center), log on to Support Center to view your customized branding.

If you brand a community, use the URL for the branded community to view your customized branding. Support Center displays this URL after you brand a community and at the top of the Apply Branding page.

NOTE:

Sign in to Support Center as technician for the community that you want to brand, and not as a technician for the root community.

Chapter 7: Deploy Account Management Website

This chapter explains how to deploy and use the standard Account Management Website. If you plan to create a custom Website, see *Account Management Web Services Development*.

- [Overview of Account Management Website, below](#)
- [Deploy Account Management Website, on the next page](#)
- [Account credentials, on page 78](#)
- [Account Management Website Interface, on page 79](#)
- [MyRoam , on page 82](#)

Overview of Account Management Website

Account Management Website lets users download Agent Setup files, manage their account information, retrieve files (if you use Support Center to enable MyRoam), or order backed-up files on media such as CDs or DVDs when they work from a computer that does not host an Agent.

If you use Legacy PC Agents, you can use Account Management Website only to retrieve files. When users log on to the website, they can gain access to MyRoam, but only if you enable it.

Connected Backup has two types of Account Management Websites:

- **Standard Account Management Website.** If you manage your Data Center, you install the standard Account Management Website when you install the Data Center and Support Center software.
- **Custom Account Management Website.** You use the Account Management Web Services and your development tools to create a custom Website. For more information, refer to *Account Management Web Services Development*.

If you use a Data Center that another company manages, they must provide you with the URL to gain access to Account Management Website.

NOTE:

The URLs for Account Management Website are case-sensitive.

The standard Account Management Website includes the following features:

- Account registration
- Agent software downloads
- Profile editing, including user password reset

- Connection to the MyRoam application for file retrieval
- Ability to order account images on CDs or DVDs
- Reinstallation of Agent software for account recovery

Deploy Account Management Website

To deploy Account Management Website

1. Install the Data Center software on the primary Data Center server.
For more information, see *Installing the Data Center*.
2. Designate a server to host the Account Management Website software.
For more information about system requirements, refer to *Installing the Data Center*.
3. To install the standard Account Management Website on the designated server, run Data Center Setup and select **Install Website with MyRoam**.

For more information, refer to *Installing the Data Center*.

For more information about creating a customized Website, refer to *Account Management Web Services Development*.

4. If necessary, edit the terms of use and privacy statements in the Website.
5. Create Agent configurations in Support Center.
For more information, see [Create Agent configurations, on page 41](#).
6. If necessary, set the default URL for the Registration and Logon pages.
7. Distribute the Registration URL for the Website to users.

Support Center displays this URL on the Edit Agent Configurations page in the **PC Configurations** node. When users go to this URL, they can register an account and download the Agent software.

NOTE:

The URLs for Account Management Website are case-sensitive.

Ensure security

When a user with either native or enterprise directory account credentials connects to the Account Management Website (AMWS) through a Web browser and receives account information, the Web browser transmits the user's password to the Web server unencrypted. Therefore, if you support native or enterprise directory accounts, ensure that your Web server is secure unless you restrict Web access to a private network. For single sign-on accounts, AMWS does not receive or transmit the user's credentials, the third-party identity provider handles all authentication.

Edit the Terms of Use and Privacy pages

By default, the **Terms of Use** and **Privacy** links in the generic Account Management Website display content. If you host your Website, change the terms to meet the legal requirements of your company.

To edit the Terms of Use and Privacy statement

1. Log on to the server where you installed the standard Account Management Website.
2. Go to the following folder:

```
\Datacenter\apache-tomcat-9.0.37\webapps\ssws\common
```

3. Use any HTML or text editor to edit the following files:
 - `policy.html`. This page contains the privacy statement content.
 - `terms.html`. This page contains the terms of use content.

Set the Default URL for Registration and Sign In

When you create Agent configurations and Profile and Website settings in Support Center, Support Center generates URLs for the Account Management Website Registration and the standard Sign In pages. Whether these URLs are resolvable names depends on your network settings. You can use Data Center Management Console (DCMC) to set the protocol, computer name, and domain name portions of the URL.

For more information about how to set the URL, refer to DCMC Help.

Set up user access

Users open Account Management Website in the following ways:

- Enter the URL of the sign in page in a Web browser.

After you install the Account Management Website, send the URL of the Website to your users. Support Center displays the default Website URL in the General page of the **Profile and Website Settings**. You can use the default URL or you can specify a URL of a different Web server.

NOTE:

The URLs for Account Management Website are case-sensitive.

- In the Agent User interface, click **Tools > Account Online**.

To enable this option, configure the Agent to allow access to the Account Management Website from the Agent User interface.

- When you migrate an Agent to version 8.x, on the Agent Successful Installation or Upgrade window, click the link to the Account Management Website.

To sign in to Account Management Website, users must enter their Connected Backup account credentials. For more information, see [Account credentials, on the next page](#).

Set up technician access

Technicians can gain access to the Account Management Website from the Account Summary page in Support Center. When technicians click the link to Account Management Website from the Account Summary page, they sign in as the account user and can use the same features as the user. Only technicians with permission to access users' data have access to the link. For more information about how to specify technician permissions, see Support Center Help.

Account credentials

During registration, Account Management Website (AMWS) prompts for Connected Backup account credentials. Which of the following types of credentials a user enters depends on the type that his or her community uses:

- **native Connected Backup account credentials.** The user enters an e-mail address and password to register his or her account. AMWS also prompts for user profile information and stores it along with the credentials in the user's profile.
- **enterprise directory credentials.** The user enters the credentials for his or her enterprise directory account. AMWS loads account information from the enterprise directory and stores it in the user's profile. However, it does not store the enterprise directory account credentials.
- **single sign-on (SSO) credentials.** The user enters the credentials required by his or her single sign-on network account. AMWS does not load or store account information or credentials from the SSO network account.

To sign in to AMWS after the registration process, users must enter their credentials. Users can specify the same account credentials for more than one account. If they do, after they sign in, AMWS prompts them to select which account to access. Users can sign in to and view only one account at a time.

Legacy PC Agent accounts

Users that have Legacy PC Agents do not always have e-mail addresses and passwords associated with their accounts. When you upgrade these Agents, the upgrade process assigns account credentials to the account as follows:

- If the Legacy PC account has no e-mail address or password associated with it, the upgrade process assigns the account number as a temporary e-mail address, and it assigns the account encryption key as the temporary password.
- If the Legacy PC account has an e-mail address but no password associated with it, the upgrade process assigns the account encryption key as the temporary password. Users can enter the Legacy PC account e-mail address or their account number as the e-mail address. They must enter the account encryption key as the password.
- If the Legacy PC account has a password associated with it but no e-mail address, the upgrade process assigns the account number as the temporary e-mail address. Users can enter their Legacy PC account password or the account encryption key as the password.

NOTE:

The temporary e-mail addresses and passwords that the upgrade process assigns to an upgraded account do not expire.

Account credential management

Connected Backup provides two ways to update the credentials of users in a community that uses native Connected Backup accounts:

- Users can modify their own credentials through Account Management Website

For more information about how to edit profiles, refer to Account Management Website Help.

- Technicians can modify a user's credentials through Support Center.

For more information about how to set passwords and change the contact information, refer to Support Center Help.

However, Connected Backup does not support credential management for users in a community that maps accounts to either an enterprise directory or single sign-on accounts. To modify credentials for these types of accounts, users must either contact their system administrator or change the values in their enterprise directory or SSO system.

Account Management Website Interface

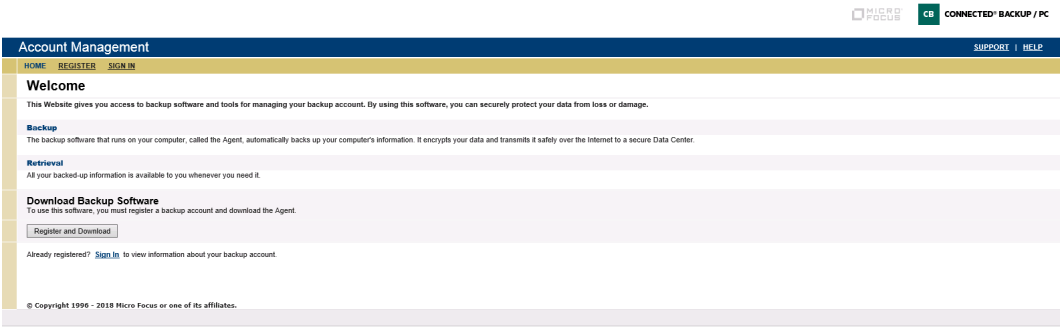
The standard Account Management Website displays the following Web pages:

- Welcome
- Registration
- Sign In
- Summary

Because you can customize any page in the web site, your website might be different from the examples in this section.

Welcome page

The following figure shows the Welcome page that users see when they open the Account Management Registration URL.



Registration page

The following figure shows the Registration page that users with native Connected Backup accounts see when they start the registration process.

A screenshot of the 'Registration - Enter Registration Information' page. The header is dark blue with 'Account Management' on the left and 'SUPPORT | HELP' on the right. Below the header is a yellow navigation bar with '1. REGISTER' and '2. DOWNLOAD and INSTALL'. The main content area is white and contains a 'Registration - Enter Registration Information' title, a red asterisk indicating required fields, and several form sections: 'Name' with fields for first, middle, and last name; 'Sign-In Information' with fields for email address, password, and confirm password, accompanied by two orange warning icons; 'Contact Information' with fields for company, country (dropdown), address lines, city, state (dropdown), zip code, and phone number. At the bottom are 'Continue' and 'Cancel' buttons, and a footer stating '© Copyright 1996 - 2018 Micro Focus or one of its affiliates.'

Sign In page

The following figure shows the standard Sign In page. Users with native Connected Backup credentials or enterprise directory credentials see this page when they go to the Account Management Website URL after they register and install an account.

MICRO FOCUS CB CONNECTED® BACKUP / PC

Account Management [SUPPORT](#) | [HELP](#)

Sign In

To sign in using your SSO account credentials, use the [SSO Sign In page](#).

Email Address:

Password:
 [Forgot password](#)

(Passwords are case sensitive.)

© Copyright 1996 - 2018 Micro Focus or one of its affiliates.
Version 8.10

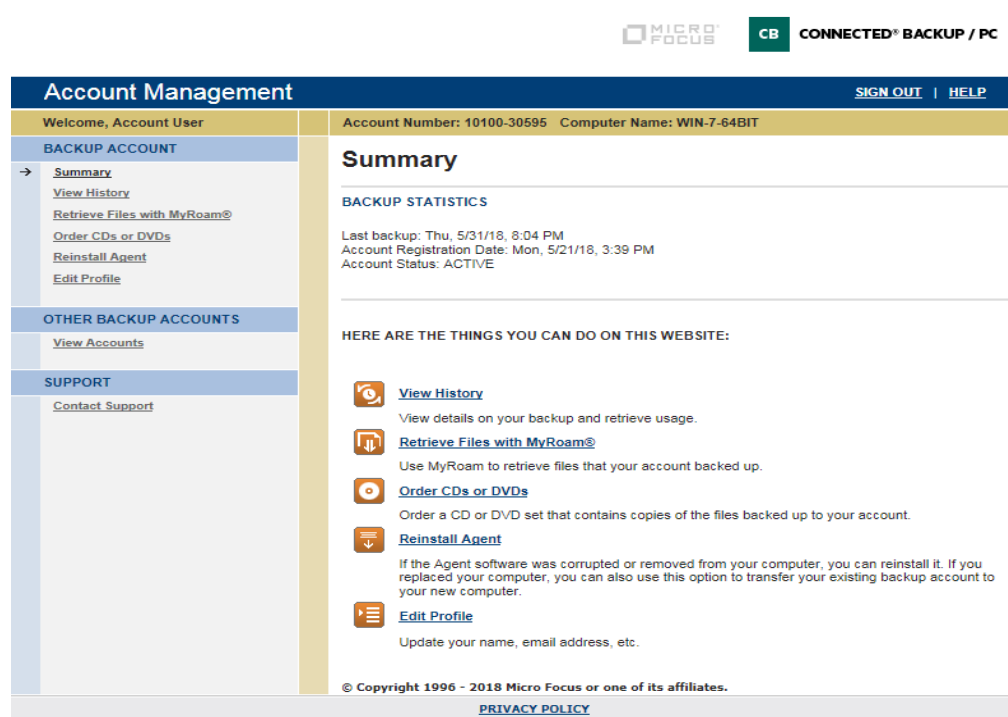
For users who access their Connected Backup account using SSO credentials, Account Management Website displays their corporate SSO Sign In page. If for some reason AMWS does not automatically display the SSO Sign In page, users can do the following to display it:

1. Click **SSO Sign In page**.
2. Type the unique SSO Provider ID that Connected Backup uses to identify the corporate Identity Provider (IdP) for the user's account, and then click **Go**.

If the user does not know this ID, they should contact their system administrator.

Summary page

The following figure shows a typical Summary page that users see after they sign in to the Account Management Website. The exact options available depend on the Agent configuration and Connected Backup account of the user.



MyRoam

MyRoam lets users retrieve backed-up files to any computer without using the Agent User interface. To access MyRoam, a user must sign in to Account Management Website. After the user selects files to retrieve, the Data Center creates a ZIP archive file that contains the selected files. The user downloads this file, and then extracts it to a location on his or her computer.

NOTE:

Users cannot retrieve files if the ZIP archive file is larger than 2 GB. If MyRoam determines that the ZIP will be larger than 2 GB, it prompts the user to clear some files from the retrieval set, and then try to retrieve files again.

MyRoam cannot retrieve e-mail files backed up by an Agent that uses EmailOptimizer.

If you initiate the retrieval from a computer with a different type operating system than the computer on which the Agent account resides, the Data Center creates a ZIP file that contains only the files that you selected. The ZIP file does not retrieve the metadata associated with the files.

If you initiate the retrieval from a computer that runs the same type operating system as the computer on which the Agent account resides, the Data Center creates a ZIP file that contains the following files:

- MyRoam_Expander file
- A message file
- A data file

The MyRoam_Expander file is an executable file that retrieves your files along with metadata that is associated with the files.

For example, if you use Safari on a Mac computer to download files from an Agent account on a Windows computer, the Data Center creates a ZIP file that contains only the files that you selected for retrieval. If you use Safari on a Mac computer to download files from an Agent account on a Mac computer, the Data Center creates a ZIP file that contains the files that you selected for retrieval and the MyRoam_Expander executable file. You extract the contents of the ZIP file, and then double-click MyRoam_Expander.

To access MyRoam, users must log on to Account Management Website.

License and permission requirements

To let users use MyRoam, enable MyRoam in the Support Center. You can enable MyRoam in your top-level community. You also can enable or disable MyRoam in individual subcommunities and for individual accounts.

You can enable MyRoam in one or more communities under the following conditions:

- If you host your Data Center, you need to install a license for MyRoam on the Data Center server. If your current license file does not include MyRoam, contact your sales representative to buy this license.
- To enable the MyRoam feature in a community, your technician account must have **Permission to Allocate Licenses to Sub-communities** enabled.
- To enable MyRoam for specific Agent configurations, your technician account must have **Modify Agent Configuration** enabled.

MyRoam installation

The MyRoam installation is part of the Account Management Website installation. To install MyRoam, run Data Center Setup and select **Install Website with MyRoam**. For information on how to install software on the Data Center server, refer to *Installing the Data Center*.

Enable MyRoam

You must enable MyRoam for each community and each configuration in the community that needs access to this feature.

To enable MyRoam

1. Sign in to Support Center. Use a technician ID that has the Allocate Licenses to Sub-Communities and Modify Agent Configurations permissions enabled.
2. Select the community where you want to enable MyRoam.
3. On the Community Status page, click **Manage Features**.

4. On the Manage Features page, locate the row for the MyRoam feature, and then in the **Settings** column, click **Enabled**.
5. Click **Save**.
6. Expand the **Configurations** node.
7. Expand the **Profile and Website Settings** node and select the configuration for which you want to enable MyRoam.

The Edit Profile and Website Settings - General page opens.

8. Select **Options**.

The Edit Profile and Website Settings - Options page opens.

9. In the Account Management Options section, select **Allow end users to retrieve files using MyRoam**.
10. Click **Finish**.

Enable MyRoam for individual accounts

After you enable MyRoam at the community and configuration level, you can enable it for individual accounts or account groups.

To enable MyRoam for one or more accounts

1. Sign in to Support Center. Use a technician ID that has the Modify Agent Configurations permissions enabled.
2. Search for an account or create an account group.
3. Select **Tools > Change MyRoam State**.
4. Select the check box to enable MyRoam, and then click **Save**.

Chapter 8: Agent interfaces

This chapter explains the interfaces that you can use to install and configure Agents.

- [Overview of the Agent interfaces, below](#)
- [Agent Startup wizard, on the next page](#)
- [Agent User Interface, on page 90](#)
- [Agent command-line interface, on page 93](#)

Overview of the Agent interfaces

The Agent includes the following interfaces:

Agent Startup Wizard	A graphical interface that opens when users start their Agents for the first time installation. For more information, see Agent Startup wizard, on the next page .
Agent User interface	<p>A graphical interface that you use to perform the following tasks:</p> <ul style="list-style-type: none">• View a summary of the most recent backup results and the configured backup schedule.• View and specify files in the backup set. The backup set contains the files you selected for back up.• View and add rules to the Agent rule set.• Retrieve files that the Agent previously backed up.• View a history of Agent events and operations. <p>For more information, see Agent User Interface, on page 90.</p>
Installation command-line interface	<p>A command-line interface that you use to perform the following tasks:</p> <ul style="list-style-type: none">• Install an Agent• Remove an Agent• Recover an Agent• Upgrade an Agent <p>For more information, refer to <i>Installing PC Agents</i>.</p>
Agent command-line interface	<p>A command-line interface that you use to perform the following tasks:</p> <ul style="list-style-type: none">• Back up files• Retrieve files

	<ul style="list-style-type: none">• Activate Agents• Update account profiles <p>For more information, see Agent command-line interface, on page 93.</p>
--	--

Agent Startup wizard

The Agent Startup Wizard is a graphical interface that, if enabled, guides users through set up or recovery of Agent accounts. The Agent Startup Wizard runs under the following circumstances:

- Technicians or users run the `msiexec` tool to perform the following tasks:
 - Install a native account with the Startup Wizard enabled in Support Center.
 - Install any type of account using an invalid value for the `RESERVATIONCODE` parameter.
 - Install an enterprise directory account without using the `LDAPID` parameter or specifying an invalid LDAP account for it.
 - Install a single sign-on account in non-silent mode (`/qr` or `/qf` verbosity).
- Users start an Agent from a disk image that was installed with the `msiexec` tool's `DISKIMAGE=serviceon` parameter.

The technician who creates the disk image must create one with a running service. For more information, refer to *Installing PC Agents*.

- Technicians or users activate an Agent installed with the `msiexec` tool's `DISKIMAGE=serviceoff` parameter, as follows:
 - Use the `activate` command with the `-registernow` parameter on a native account that has the Startup Wizard enabled for it through Support Center.
 - Use the `activate` command with the `-registernow` parameter for an enterprise directory or SSO account without also specifying the `-ldapid` or `-accountuid` parameter, respectively.

Startup Wizard main pages

When a user starts the Agent for the first time, the Startup Wizard displays a Welcome page that describes the purpose of the Agent and the Wizard. The user selects one of the following options:

- Create a new backup account
- Recover an existing Agent account

The screenshot shows the 'Connected Backup' window titled 'Welcome to the Startup Wizard'. On the left, under 'Startup options', the 'Create a new backup account' option is selected. The main area is titled 'New Backup Account Creation' and contains several input fields grouped into sections: 'User identification details' (Email, Password, Confirm Password), 'Personal details' (First Name, Middle Name, Last Name, Phone Number), and 'Address details'. Red 'Required' labels are next to the Email, Password, Confirm Password, First Name, and Last Name fields. 'Finish' and 'Cancel' buttons are at the bottom right.

Startup Wizard – Create Account option

Depending on Agent configuration, the wizard prompts for one of the following:
Profile information (no account reservation code)

This screenshot is identical to the one above, showing the 'Connected Backup' window with the 'Create a new backup account' option selected. It displays the 'New Backup Account Creation' form with fields for user identification, personal details, and address details. The 'Required' labels are visible next to the Email, Password, Confirm Password, First Name, and Last Name fields.

Account reservation code

Connected Backup

Welcome to the Startup Wizard

The Agent backs up the files on your computer over the network to a secure Data Center. All of your backed-up files are available to you when you need them. This wizard will help you set up your Agent so that you can use it to back up and retrieve files.

Startup options

- ☒ Create a new backup account
Choose this option if you are installing the Agent for the first time.
- ☐ Recover an existing backup account
Choose this option if you reinstalled the Agent on your computer, or if you replaced your computer and need to transfer your existing backup account to your new computer.

New Backup Account Creation

Reservation code details

Reservation Code: * Required

User identification details

Email: * Required

Password: * Required

Confirm Password: * Required

Personal details

First Name: * Required

Middle Name:

Last Name: * Required

Finish Cancel

LDAP network login credentials

Connected Backup

Welcome to the Startup Wizard

The Agent backs up the files on your computer over the network to a secure Data Center. All of your backed-up files are available to you when you need them. This wizard will help you set up your Agent so that you can use it to back up and retrieve files.

Startup options

- ☒ Create a new backup account
Choose this option if you are installing the Agent for the first time.
- ☐ Recover an existing backup account
Choose this option if you reinstalled the Agent on your computer, or if you replaced your computer and need to transfer your existing backup account to your new computer.

New Backup Account Creation

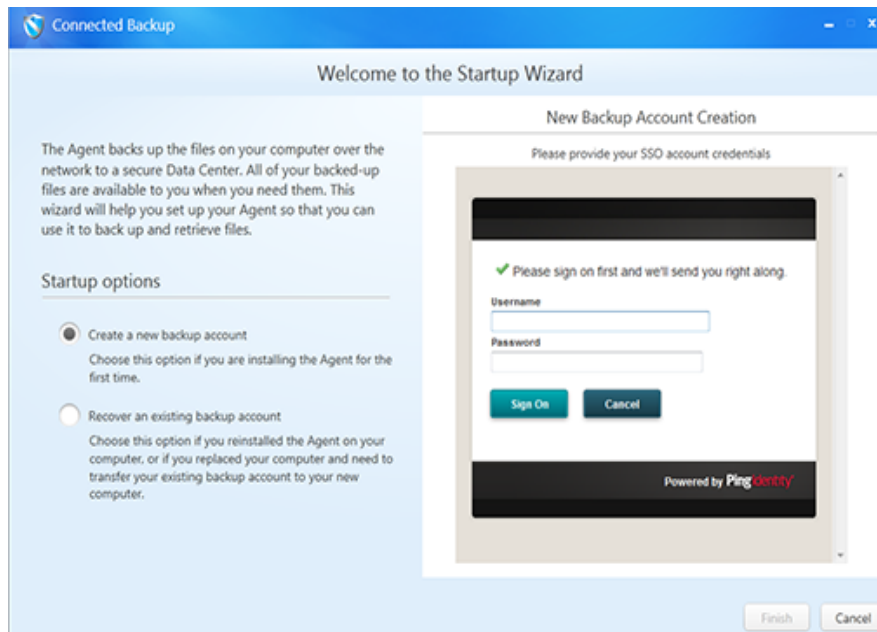
Network Login ID

Network Login ID: * Required

The Network Login ID is the username that you use to log on to your network.

Finish Cancel

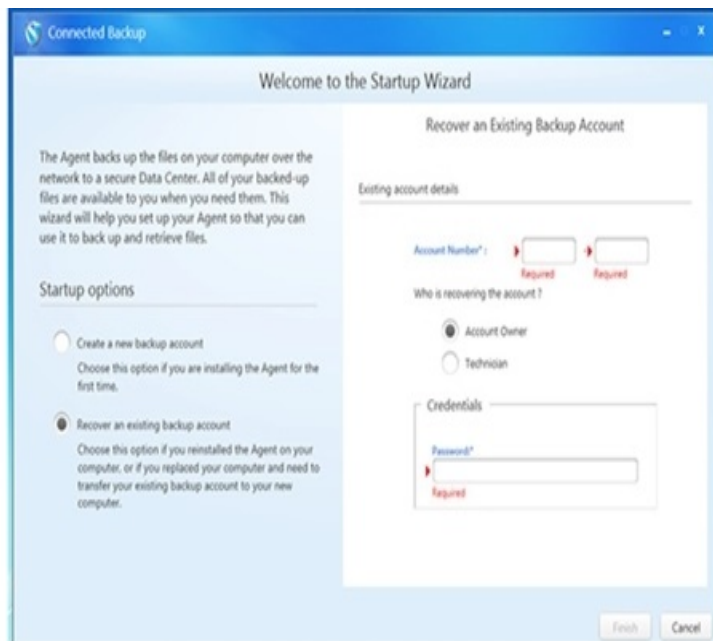
Single sign-on (SSO) credentials



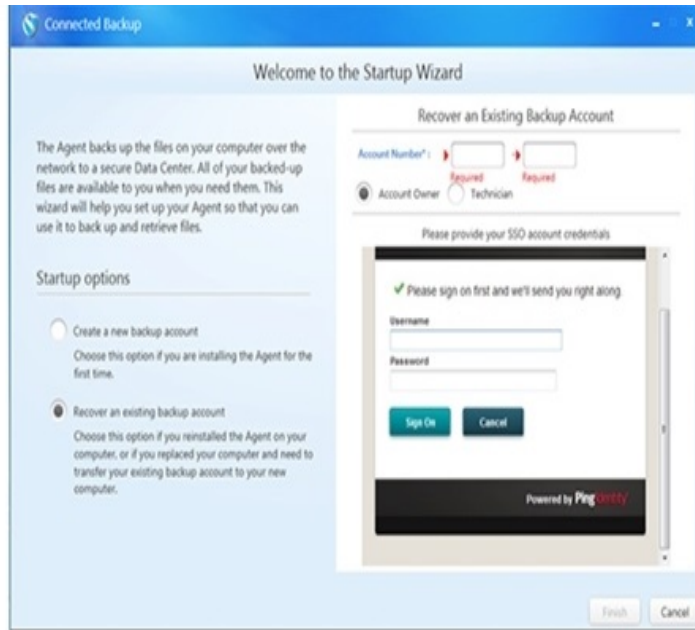
Startup Wizard – Recover Account Option

The Recover Account Option prompts for Agent account number and credentials to recover the account.

Native and LDP accounts



Single sign-on (SSO) accounts



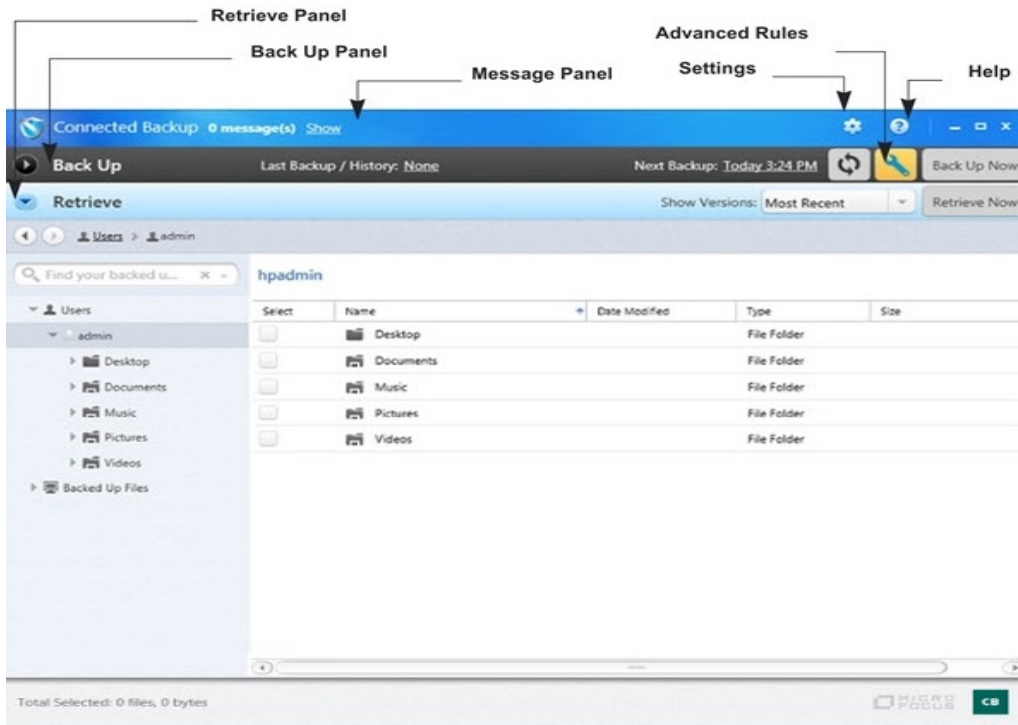
Agent User Interface

You use the Agent user interface to perform the following tasks:

- View a summary of the most recent backup results and the configured backup schedule.
- View and specify files in the backup set. The backup set contains the files you selected for backup.
- View and add rules to the Agent rule set.
- Retrieve files that the Agent previously backed up.
- View a history of Agent events and operations.

Agent Main window

The following figure shows the main window that the Agent displays when you open the Agent:



Agent user interface components


The following table describes the components of the Agent user interface.

Component	Description
Message Panel	<ul style="list-style-type: none">• Messages. Displays the number of messages. Click Show to display the messages in detail.• Settings. Click to configure Agent settings.<ul style="list-style-type: none">◦ Account. Click to change the account preferences such as e-mail, password and contact information. Can only change if you have a native Agent account and permission to edit your profile.◦ Backup Schedule. If you configure the Agent to let users edit the backup schedule, this option lets users change the dates and times when backups occur.◦ Options. If you configure the Agent to let users change backup options, this option lets users perform backups over dial-up connections and change the backup mode (passive or aggressive). For more information about backup modes, refer to Support Center Help.◦ Application. Periodically, updates to Connected Backup become available and are automatically installed on your

	computer. The Application tab displays the version number and installation date of the Connected Backup software on your computer.
Help button	<ul style="list-style-type: none"> • Help. Displays a list of available help topics. • About. Displays information about the installed Agent software. It also displays the account number associated with the Agent.
Back Up Panel	<ul style="list-style-type: none"> • Current Backup Set. Browse the contents of your computer to see which items your backup set contains. • Last Backup. Displays the time of the last backup. Click the date link to view a detailed summary of the last backup. • Next Backup. Displays the time of the next automatic backup. Click the date link to change the backup schedule. • Refresh button. Click to view recently added items. • Advanced Rules button. Click to add backup set rules. • Back Up Now. Lets you start a back up manually. The Agent backs up all new or changed files in the back up set.
Retrieve Panel	<ul style="list-style-type: none"> • Backup Set. Browse the contents to see which items were backed up. • Retrieve Now. Lets you start a retrieve.

Use the Agent user interface

The following table explains how to use the Agent user interface:

Goal	Action
Select an Agent function	<p>Click the appropriate panel to perform the following tasks:</p> <ul style="list-style-type: none"> • Select or clear files in the backup set. • Retrieve files. • View the Agent History of events. • View a summary of the most recent backup.
Gain access to online help	<p>To open the Agent help, click  > Help.</p> <p>For information about an open panel or window, click the Help button.</p>

Agent command-line interface

When you install the Agent software, Agent Setup program also installs the Agent command-line interface. You can use the Agent command-line interface to perform the following tasks:

- Activate Connected Backup Agents from a disk image.
- Back up files.
- Retrieve files that the Agent previously backed up.
- Get Agent configuration data.

The following table lists the commands that you can use and where to find additional information about them.

Command	Purpose	Reference
activate.exe	Activates an Agent that an administrator installed from a disk image.	<i>Installing PC Agents</i>
backup.exe	Initiates an unscheduled backup. This command is similar to using Backup Now in the Agent User interface.	File backup, on page 95
retrieve.exe	Retrieves one or more files from the Data Center or from an account image.	File retrieval, on page 108
updateprofile.exe	Updates registration fields according to settings that you specify in an XML file.	Use the UpdateProfile Command, below

The commands and parameters are not case-sensitive.

Use the UpdateProfile Command

The UpdateProfile command causes the Agent to update the registration information stored on the Data Center server with information that you specify in an XML file.

NOTE:

The UpdateProfile command does not support accounts that are mapped to an enterprise directory or use single sign-on credentials.

The UpdateProfile command uses the following syntax:

```
updateprofile.exe -f[ile] filename  
[{-help | -?}]
```

Where *filename* is the full path name to the XML file that contains registration information.

The following table describes the parameter that UpdateProfile uses:

Parameter	Syntax/Description
-f [file]	<p>(Required)</p> <p>Specifies the path name of an XML file that you create.</p> <p>Examples:</p> <pre>updateprofile.exe -f "c:\filename.xml"</pre> <p>Where</p> <p><i>filename</i> is the name of the XML file that contains registration information.</p> <p>The following example shows how you can use the UpdateProfile command after you recover an account:</p> <pre>msiexec /qn /i AgentSetup.msi ACCOUNTNUMBER=<i>account_number</i> TECHID=<i>technician_id</i> PASSWORD=<i>technician_password</i> updateprofile.exe -f "c:\filename.xml"</pre>
[{-help -?}]	<p>(Optional) Displays help for the current command.</p>

For more information on the required fields and the maximum character length for each field in the XML file, refer to *Installing PC Agents*.

The UpdateProfile command requires all of the registration fields.

If you do not specify information for a registration field (for example, you specify <EmployeeID></EmployeeID>), UpdateProfile clears the field in the Data Center database.

NOTE:

The UpdateProfile command overwrites changes that you make to these fields with Support Center.

Chapter 9: File backup

This chapter explains the process that the Agent uses to upload data from a PC to the Data Center. It also describes the backup settings in Agent configurations.

- [The backup process, below](#)
- [Connected EmailOptimizer information, on page 98](#)
- [Back up encrypted files, metadata, and attributes, on page 100](#)
- [Backup settings, on page 101](#)

The backup process

The following actions occur during the backup process:

- The Agent scans the host computer's hard disk and creates a list of files eligible for backup.
- The Agent analyzes the file list to identify any new files or files that have changed since the last backup.
- The Agent connects to the Data Center.
- The Agent transmits files to the Data Center.
- The Agent records the results of the backup.

Disk scan

When the Agent initiates a backup, either in response to a user request or according to its backup schedule, the Agent scans files on disk drive volumes. The scan excludes removable or network share drives. If your removable drive presents itself to the operating system (OS) as a fixed drive, it may be included in the backup set.

NOTE:

A removable drive that meets these requirements must always be connected to your computer in order for it to continue to be protected. If a backup occurs without the drive attached, the system will process the missing drive as deselected and will issue delete records for all data previously protected on this removable drive.

If you use the Agent rule set to exclude specific drives, the Agent does not scan those drives. If you exclude drives that have files that you do not need to back up, you reduce the amount of time that is required to back up a computer.

The scan creates a list of the files that are on the computer. The Agent uses the rules in its rule set to determine which files to select for backup. The backup set for the Agent contains all of the selected files in the list.

NOTE:

The next backup requires a scan of the entire hard disk under the following circumstances:

- You restart the Agent service or the Agent computer.
- The Agent rule set changes.
- The components of the backup set change.
- The files in the backup set have 90,000 or more changes for backup.

File analysis

During analysis, the Agent reviews the list of files it compiled during the scan and determines whether each file is new, modified, or an exact duplicate of another file on the computer. It also determines whether the user deleted any previously backed-up files. The Agent then performs the actions described in the following table:

File type	Actions
Base	The file is new, and the Agent backed up the file in its entirety. The Agent sends the entire file for back up and designates it as a base file.
Deleted Files	The Agent uses file synchronization to notify the Data Center if a user deleted a previously backed-up file. The Data Center deletes the file after the file expiration rules determine whether the Data Center retains a file in storage.
DeltaBlock	The Agent backs up a modified file from the base file data and saves that file as a delta file .
MDATE	The Agent checks a file modification date (MDATE), size, directory path, and security descriptors to determine whether a file has changed since the last backup session.
Compound Mail File	Outlook and Lotus Notes store email messages for a user in a single *.pst or *.nsf file. If you use the optional Connected EmailOptimizer feature, the Agent can decompile the mail files. This action enables the Agent to analyze attachments during backup and apply the DeltaBlock and SendOnce technologies to individual mail folders and attachments. If you use Connected EmailOptimizer, you can reduce the amount of disk space on the Data Center required to store duplicate attachments.
SendOnce	If the file has been backed up previously, the Agent does not back up this file because at least one other account has already backed up the same file. SendOnce technology prevents multiple copies a file from being stored on the Data Center.
Size	The original size of the file in KB, MB, or GB before the Agent applied SendOnce, Delta Block, or compression.
Symbolic Link	If the file is a duplicate of another file. The Agent designates a symbolic link to the duplicate file and does not send the file contents.
Touch	The Agent backs up only changes to the file attributes because the data remained the same.

Modified file identification

The Agent backs up only new files and the portions of files that changed since the last backup. This process ensures complete protection of the files and reduces use of disk space on the Data Center. To determine whether a file changed since the last backup session, the Agent checks the file's modification date (MDATE), size, directory path, and security descriptors.

The Agent determines which portions of the file changed by comparing the digital signature of the file with that of the version on the Data Center. The Agent backs up only the changed portions, or deltas, of these files.

Modified mail file identification

Microsoft Outlook and Lotus Notes store user's e-mail messages in a single *.pst or *.nsf file. If you use optional Connected EmailOptimizer, the Agent can decompile the mail files. This action enables the Agent to analyze attachments during backup and apply DeltaBlock and SendOnce to individual mail folders and attachments. If you use the Connected EmailOptimizer feature, you substantially reduce the amount of disk space on the Data Center required to store duplicate attachments.

If you do not use the Connected EmailOptimizer, the Agent cannot analyze the contents of individual messages and file attachments to identify changes or determine whether the attached files already exist in the SendOnce pool on the Data Center. As a result, new attachments received since the last backup are sent, in their entirety, to the Data Center for backup.

For a description of EmailOptimizer, see *Product Overview*.

File preparation

The Agent compresses and encrypts file data before it transmits the data to the Data Center. It uses the ZLIB compression library to compress both base and delta file data and then uses the encryption method that you specified when you registered the Agent to encrypt the data.

Connection to the Data Center

The following actions occur when the Agent connects to the Data Center:

1. The Agent uses a network connection to connect to the Data Center. When the Agent contacts the Data Center, the Agent account number identifies the Agent.
2. After the Data Center authorizes the connection, the Data Center creates an empty archive for the account and waits to receive files from the Agent.
3. While the Data Center waits to receive files, it downloads a list of expired files to the Agent.
4. The Agent records the file expirations in a local database on the client.
5. The Agent also checks the Data Center to determine which file sets for backup already exist in the SendOnce pool.

If an exact copy of a file exists in the SendOnce pool, the Agent does not send the file's content to the Data Center. Instead, it sends information about the file name and location. The Agent and

Data Center can use this information at a later time to retrieve the file content from the SendOnce pool to restore the client's copy of the file.

NOTE:

The Agent initiates connections between the client and the Data Center server. The Data Center never initiates contact with the Agent client. Even when a technician uses Support Center to modify an Agent configuration, the Data Center downloads the changes only after the Agent connects to the Data Center.

Transmission of files

After the Agent connects to the Data Center, it initiates a backup session. The backup consists of the following tasks:

1. The Agent transmits the digital signature of the file to the Data Center. The Data Center compares this signature with other files in its database. If an identical file exists in its database, the Data Center creates a pointer to the file in the SendOnce pool when it creates the archive for the backup. The Agent does not transmit the file to the Data Center.
2. If the SendOnce does not contain the file, the Agent uses the ZLIB compression library to compress the file.
3. The Agent uses an encryption key to encrypt the file. The Agent generates the encryption key. You cannot view this key.
4. The Agent transmits the compressed and encrypted file to the Data Center.
5. As the Data Center receives the files, it puts them into archives.

For more information, see the *Product Overview* guide.

Record of backup results

The Data Center transmits an acknowledgement (ACK) or non-acknowledgement (NACK) for each file that it receives or fails to receive from the Agent. The Agent uses these receipts to update the Agent database. To view the results of the backup, view the Agent History in the Agent User interface or Support Center.

NOTE:

If a backup fails because of a power outage, or a backup service fails unexpectedly, the Agent History indicates the failure but does not provide details.

Connected EmailOptimizer information

If you use Connected EmailOptimizer to back up your mail files, the decompile process creates smaller constituent files on your computer that contain parts of the mail file. By default, Connected EmailOptimizer stores these constituent files in the following locations, based on Agent version and the type of operating system on your computer:

Version	Location
7.x versions before 7.5.3 update 6	Mail folder resides in the Connected Backup installation folder, by default: [\$systemdrive]\Program Files\Connected\Mail
7.5.3 update 6 and later	[\$systemdrive]\Documents and Settings\All Users\Application Data>Email Backup Optimization\Data\Mail
8.x versions before 8.2.0	Mail folder resides in the Connected Backup installation folder, by default: [\$systemdrive]\Program Files\Iron Mountain\Connected BackupPC\Mail
8.2.0 to 8.2.0.4	In a subfolder beneath the current location of the mail file, with the same name as the backed up mail file.
8.2.1 and later	[\$systemdrive]\Documents and Settings\All Users\Application Data>Email Backup Optimization\Data\Mail
8.2.2 and later (Windows Vista)	[\$systemdrive]\ProgramData>Email Backup Optimization\Data\Mail
8.4.0 and later (Windows 7)	[\$systemdrive]\ProgramData>Email Backup Optimization\Data\Mail

You can configure the version 8.5 or later Connected EmailOptimizer to store the constituent files that pertain to a backed-up mail file to a folder other than the default folder.

To change the folder that Connected EmailOptimizer uses to store and process mail files, modify the appropriate Windows registry key for the Agent computer operating system:

Windows 32-bit

HKEY_LOCAL_MACHINE\SOFTWARE\Connected\Agent\Mail

Windows 64-bit

HKEY_LOCAL_MACHINE\SOFTWARE\Wow6432Node\Connected\Agent\Mail

NOTE:

If you change this Windows registry key for an Agent that has previously backed up files using the Connected EmailOptimizer, the Agent leaves any previous constituent files in the default local folder. You must remove the Connected EmailOptimizer constituent files manually from the default local folder.

If you uninstall an Agent that uses this Windows registry key, you must remove the Connected EmailOptimizer files manually from the specified folder.

Back up encrypted files, metadata, and attributes

You can back up the following types of files:

Data	Description
Encrypted files	<p>The Agent backs up encrypted files using SendOnce and Delta Block technology. You must configure your system to use the NTFS file system when you back up encrypted files.</p> <p>For encrypted files, the Agent does not back up multiple data streams, reparse points, extended attributes, sparse files, or shared file attributes.</p>
Multistream files	<p>In the NTFS file system, a stream contains the data written to the file. In addition, the stream can contain metadata for the file. You can create files that have multiple data streams associated with them.</p> <p>The Agent backs up multistream files. If a file has an Object Identifier, the Agent omits it from the backup. An Object Identifier is a type of tag that is sometimes associated with Microsoft Office files.</p>
Open files	<p>The Agent can back up open files and files that are in use by an application at the time of backup. The Agent uses Microsoft Volume Shadow Copy Service (VSS) for open file backup. If the Agent cannot connect to the open file, the Agent generates an event in Agent History and does not back up the file.</p> <p>For more information about requirements for backing up open files, see Backup settings, on the next page.</p>
Reparse points	<p>A reparse point is a collection of metadata that an application stores with a file or directory that it creates. Reparse points have an association with an application-specific filter.</p> <p>When a user opens a file or directory, the file system passes the metadata to the application-specific filter. The filter processes the data in the reparse point and performs the specified action.</p> <p>Examples of reparse points include symbolic links and Volume Mount Points.</p> <p>The Agent backs up the metadata for all reparse points except for Volume Mount Points.</p>

Security descriptors	<p>Security descriptors prevent unauthorized access to files. Security descriptors include information such as the following:</p> <ul style="list-style-type: none">• Owner of the file• Permissions the owner has granted to other users• Actions that the file system logs for auditing purposes. <p>If a security descriptor for a file or folder changes, the Agent considers the file or directory to be different from the previous version and backs up the security descriptors for the file or folder. The Agent backs up file content only if the Agent determines that, in addition to the security descriptors, the content changed.</p>
Sparse files	<p>Sparse files contain empty spaces (represented as strings of zeros) along with meaningful data (nonzero data). The file system allocates disk space for the meaningful data but does not allocate space for the nonmeaningful data (the strings of zeros). The file system tracks where the nonmeaningful data belongs. When an application retrieves a file, the Agent can retrieve the data and the strings of zeros. The Agent backs up all allocated blocks in a sparse file. It does not back up the unallocated block. When an application connects to the file, the correct data is available.</p>

CAUTION:

Do not include the Time Machine folder in your backup set. If you do, the backup process uses all available memory.

Backup settings

When you use Support Center to create or modify an Agent, you select backup settings that suit the unique needs of your users. The following table describes the backup settings:

Backup Settings	Descriptions
Backup messages	<p>You can use the following settings to configure Agents to manage messages related to backups:</p> <ul style="list-style-type: none">• If the Agent is closed before automatic backup starts, prompt the user to delay, start or cancel the backup.• If the Agent is closed, show backup outcome as a popup message.• Show a warning if there has been no successful backup in 4 days.
Agent visibility	<p>You can use the following settings to display information on the Agent window:</p> <ul style="list-style-type: none">• Show the splash screen during system startup.

	<ul style="list-style-type: none"> • Show the Agent Status icon in the taskbar notification area.
Connected EmailOptimizer password prompt (PC Agents only)	<p>For accounts with Connected EmailOptimizer, you can select how the PC Agent prompts users for email passwords during a backup. Select one of the following options:</p> <ul style="list-style-type: none"> • Prompt for the password for one minute. If the user cancels or does not reply to this prompt, back up the Lotus Notes or Microsoft Outlook file without optimization. • Prompt for the password until the user responds. If the user cancels this prompt, do not back up the Lotus Notes or Microsoft Outlook file.
Backup mode	<p>You can specify one of the following backup modes:</p> <ul style="list-style-type: none"> • Passive. The Agent does not retry backups that cannot start because of the following conditions: <ul style="list-style-type: none"> ◦ Errors. ◦ The Agent is busy doing a retrieval. ◦ The computer cannot connect to the Data Center. <p>Under these circumstances, the Agent waits for the next scheduled backup, or for a user to initiate a manual backup.</p> <ul style="list-style-type: none"> • Aggressive. The Agent retries backup periodically until a successful backup occurs. If a backup attempt generates warnings or errors, the Agent does not retry backup.
Backup limits	<p>You can limit the size of the backup set for each Agent configuration.</p> <p>You can limit the size of backups in the following ways:</p> <ul style="list-style-type: none"> • On the Agent computer, set a size limit of the backup set in megabytes or gigabytes. For example, you can set the backup set size limit to 30 GB. • Configure the Agent to display a warning message when the backup set reaches a specified percentage of its limit. For example, you can configure the Agent to display a warning when the backup set size is 90% of the allowed size limit.
Backup permissions	<p>You can configure Agents to let users have the following permissions:</p> <ul style="list-style-type: none"> • Modify their backup sets. If you enable this permission, users have access to user-configurable backup options such as the backup mode settings.

	<ul style="list-style-type: none">• Allow backup over dial-up connections.• Let users edit their backup schedules in the Agent User interface.
Backup schedule	<p>You can select one of the following backup schedules:</p> <ul style="list-style-type: none">• Automatic on specific days and times (default). Starts a backup during the same time period each day. For example, the Agent can perform a backup each night between midnight and 6:00 A.M. You can select only a range of time and not an exact time for the backup. The Agent determines when to perform the backup within the range that you specify. This behavior balances network traffic.• Manual backup. Starts a backup only when a user initiates it.
Agent rule sets	<p>To determine which files to select for backup, create rule sets. To create rule sets, use the Agent Rules wizard in Support Center.</p> <p>New Agent installations include configured rules. If you change the rules, the Agent receives the changes the next time that it connects to the Data Center.</p> <p>Users can create rules that override some rules in an Agent's default rule set. You can create overriding rules in the following ways:</p> <ul style="list-style-type: none">• Select or remove files on the Backup Set tab in the Agent User interface.• Use the Advanced Rules option to create rules. <p>For both options, users must have permission to modify their backup sets, which you set in the Agent Settings component associated with the Agent configuration.</p> <p>For more information about rule sets, see Create Agent rule sets, on page 47. For more information about how to create rules, refer to Support Center Help.</p>

Use the Agent user interface to back up files

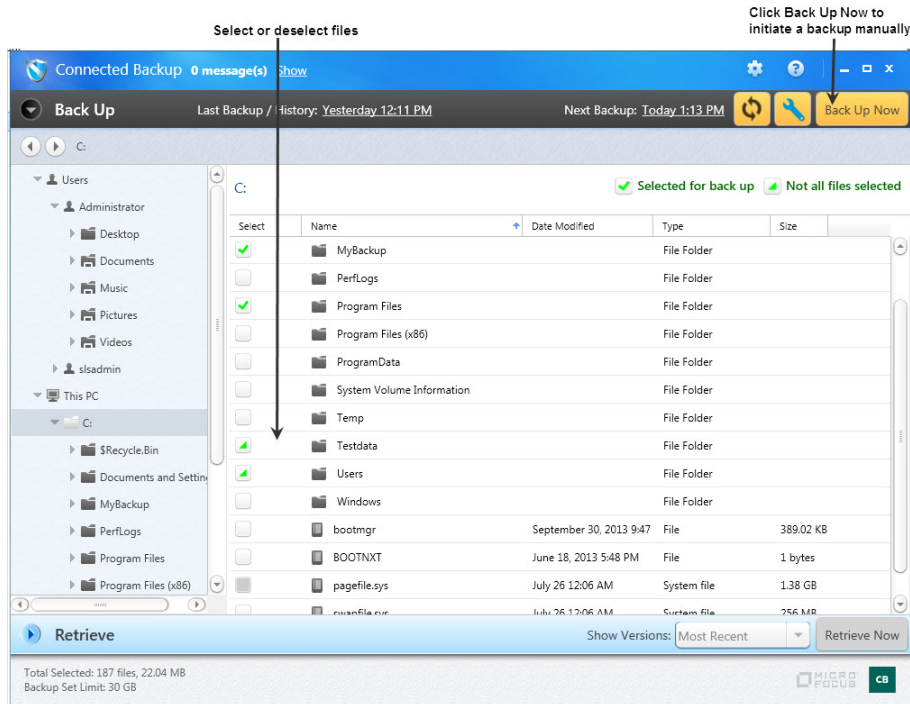
You can use the Agent User interface to start a backup manually, specify which files are in the backup set, or monitor a backup in progress.

The Agent configuration that you create in Support Center determines how the Agent backs up data. The configuration includes all of the backup settings and versions for the Agent.

For more information about how to create Agent configurations, refer to Support Center Help. For more information about how to use the Agent command-line interface for backups, see [Back up files using the Backup command, on page 106](#) and refer to Agent Help.

Back Up panel

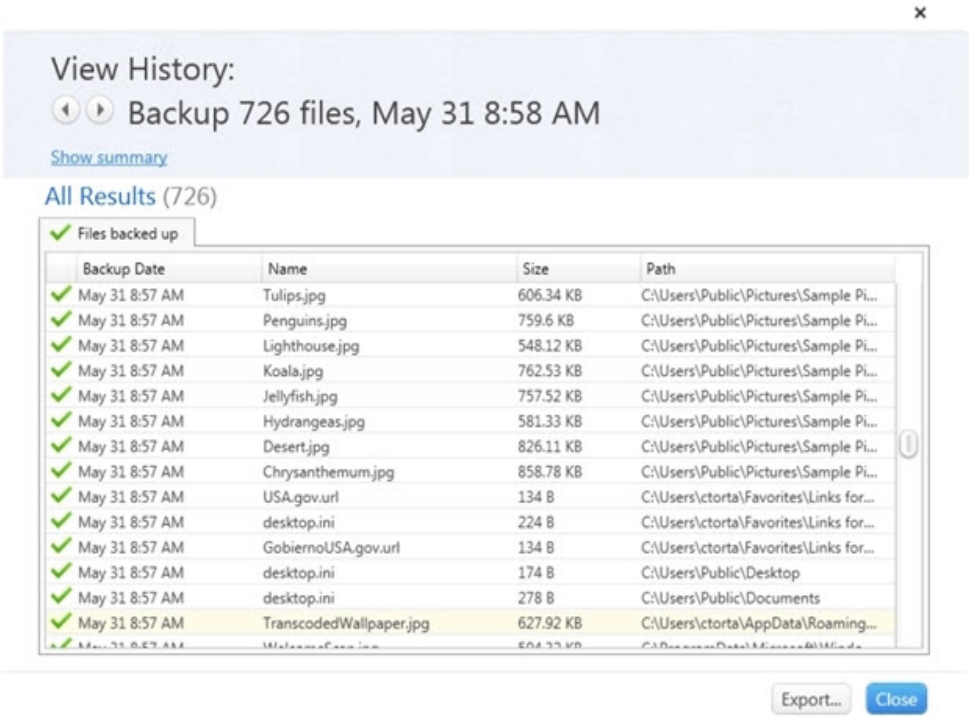
You can use the Back Up panel to change the file selection for the backup set or start a backup manually. For more information, refer to Agent Help [Back Up panel](#).



View History dialog

You can view history details about the last backups that the Agent performed. To view history, click the date link next to **Last Backup** on the **Back Up Panel**. The View History dialog opens.

The following figure shows the View History Dialog:

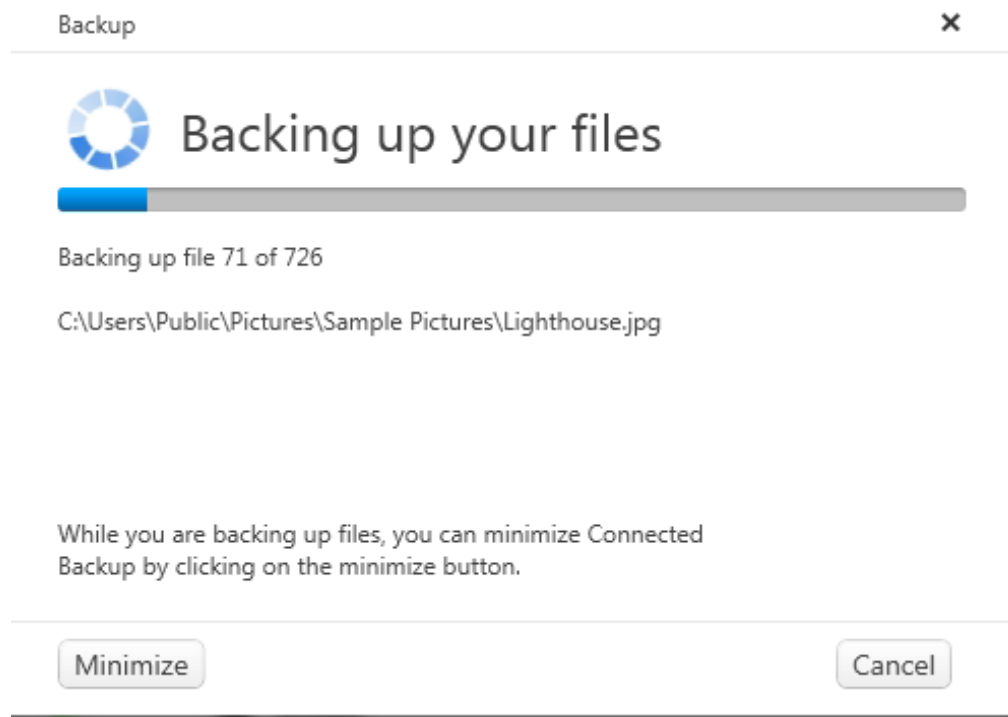


Backup monitoring

If you configure the Agent to use a predetermined schedule, you do not need to open the Agent User interface. The Agent scans the system's hard disk and identifies which files to back up.

If you want to monitor progress of a backup, open the Agent User interface while the backup is in progress. The Agent displays a progress window that indicates the state of the backup. The Agent disables all other tabs and options. You can check the Agent history to determine the outcome of a backup that is complete.

The following figure shows the Agent User interface while a backup is in progress:



Back up files using the Backup command

Rather than wait for a scheduled backup, you can use the Backup command from the Agent command-line interface to start a backup. This command is equivalent to **Backup Now** in the Agent User interface.

The Backup command backs up files based on the backup settings in the Agent configuration. You cannot use the Backup command to specify a specific file for backup.

Also use the Backup command if you use scripts to automate computer management or if you must manage computers from remote locations.

For more information about how to gain access to the Agent command-line interface, see [Agent interfaces, on page 85](#).

Requirements for backing up open files

The Agent can back up files that are open when the backup runs. To ensure that the Agent can back up open files, you need 20% of available disk space on each drive that the Agent backs up. The backup event in Agent History indicates whether the Agent was able to back up open files.

Backup command syntax

The backup command uses the following syntax:

```
backup.exe
```

[{-firstbackup | -b}]

[{-register | -r}]

[-help | -?]

Backup command options

The Backup command has the following options:

Option	Description
[{-firstbackup - b}]	(Optional) Initiates a first backup after you install the Agent.
[{-register -r}]	(Optional) Performs account registration.
[-help -?]	(Optional) Displays help for the current command.

Backup command example

The following example is a command that starts the first backup after you install the Agent.

```
backup.exe -firstbackup
```

The Agent uses the rules in its configuration to select files for backup.

Chapter 10: File retrieval

This chapter explains how to retrieve files from the Data Center and from media.

- [The Retrieval Process, below](#)
- [Support for encrypted files, metadata, and attributes, on the next page](#)
- [Retrieve files using the Agent user interface, on page 110](#)
- [Retrieve files using the Retrieve command, on page 113](#)
- [Retrieve data from media, on page 118](#)

The Retrieval Process

The following actions occur during the retrieval process:

1. The Agent connects to the Data Center to initiate a retrieval request.
2. The Data Center receives the request and packages files from one or more archives.
3. The Data Center compresses and encrypts the packaged files, and then downloads them to the Agent.
4. The Agent decompresses and decrypts the files.
5. The Agent distributes the files to the destination folders, and then applies conflict resolution rules.

File repackaging

Many files that you retrieve have multiple versions backed up on the Data Center. These backups contain incremental changes, or deltas, that the Data Center stores in one or more archives.

During a retrieval, the Data Center collects the archives that it needs to reconstitute the requested version of the files from its server and, if applicable, from its auxiliary storage devices. The Data Center extracts the required base and delta files from the archives. It then merges them to create the file or files that the Agent requested. Before the Data Center downloads the files to the Agent, the Data Center compresses and encrypts the files again for security.

E-mail notification

You can configure the Data Center to send an e-mail message to the Agent e-mail address when anyone retrieves files for an account that is registered in a specific community.

E-mail notification contributes to security. When a technician knows about a file retrieval, the technician can act appropriately if an unauthorized person retrieves the files.

You enable e-mail notification through Support Center at the Data Center, community, or subcommunity level. You cannot restrict e-mail notification to specific Agent configurations. You can enable e-mail notification for the entire Data Center or specific communities. For more information about how to enable e-mail notification, see Support Center Help.

Support for encrypted files, metadata, and attributes

This section describes how Connected Backup supports encrypted files, metadata, and attributes during file retrievals.

Retrieval of encrypted files

To retrieve an encrypted file, you need access permissions to the encrypted file. You also must use a system that is configured to use the NTFS file system.

If you retrieve files that were encrypted by a third-party application before you backed them up to a folder that is also encrypted by the third party application, the third-party application encrypts the files after the retrieval process completes.

If you retrieve the encrypted files to a directory that is not encrypted by the third-party application, the files are not encrypted after the retrieval process completes.

If you use MyRoam to retrieve the encrypted files, the third party application does not encrypt the files after the retrieval process completes.

Retrieval of sparse files

During a retrieval, the Agent restores sparse files and all allocated sparse data that was previously backed up.

Retrieval of multistream files

Retrieve restores only alternate streams on files. If a folder is missing on the client system but was previously backed up, you can select this folder for retrieval. The Agent then retrieves the associated multistream data.

Retrieval of reparse points

A reparse point is a collection of metadata that an application stores with a file or directory that it creates. During a retrieval, the Agent restores reparse points for files only. It does not restore reparse points for directories. Remove directory junctions before you retrieve the directory.

You cannot retrieve Volume Mount Points.

Retrieval of security descriptors

When you retrieve a backed up file or directory, the Agent assigns the appropriate security descriptor to the file or directory.

If the Agent must create a directory to restore a file, and the directory was not backed up previously (and therefore had no security descriptor assigned to it), the assigned security descriptor is the default value for the retrieve location. The security identifier (SID) that Retrieve assigns to the owner field of the security descriptor is the SID for the user performing the retrieve.

If you retrieve a file that did not have a security descriptor when Connected Backup backed it up, Retrieve assigns the default security descriptor for the retrieve location to the file. The security identifier (SID) that Retrieve assigns to the owner field of the security descriptor is the SID for the user performing the retrieve.

Retrieval of open files

The Agent can back up open files and files that are in use by an application at the time of backup. For more information about backing up open files, see [Back up encrypted files, metadata, and attributes, on page 100](#). You can retrieve the files that the Agent backed up while they were open.

If you try to retrieve a file while it is currently open on your system, and you selected the **Overwrite the files currently on my computer** option, the Agent renames the file that it retrieves from the Data Center. When the Agent renames files, it adds a number to the end of the file name.

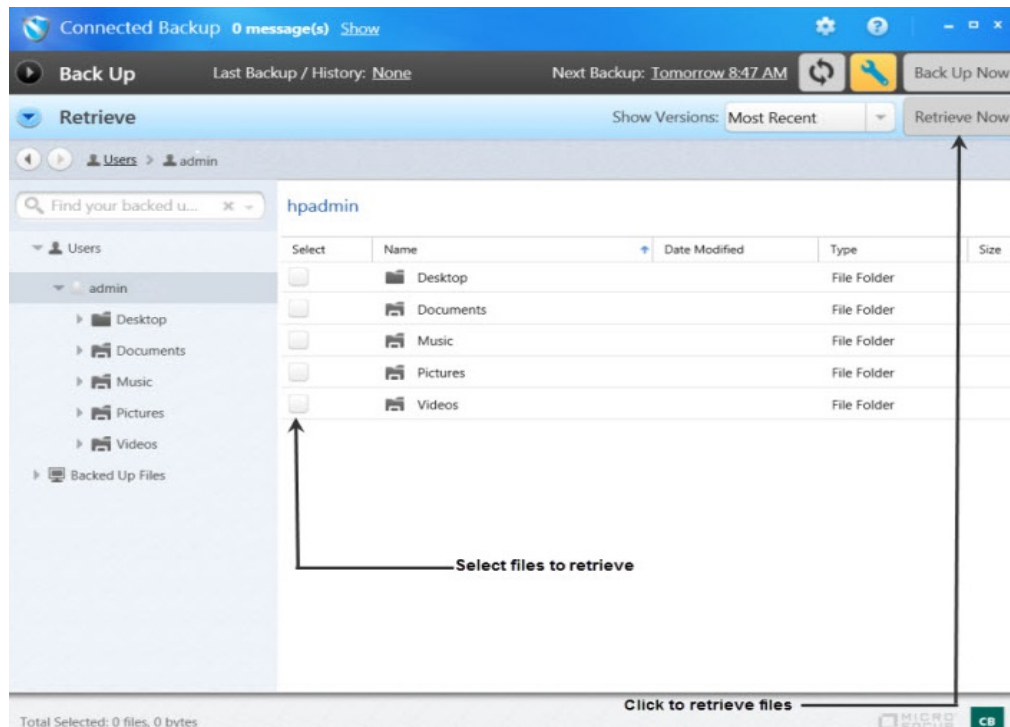
The Agent also generates an event in Agent History to indicate that it retrieved and renamed the file.

Retrieve files using the Agent user interface

When the Agent retrieves files, it uses the Agent account number to authenticate to the Data Center. The Agent submits the retrieval request to the Data Center and waits to receive the files. For more information about the Agent User interface, see [Agent interfaces, on page 85](#).

Retrieve panel

The following figure shows the Retrieve panel with a list of retrievable files.



Retrieve permissions

The Retrieve permissions that you set in the Agent configuration determine whether users need to provide credentials to gain access to the Retrieve panel. When you create Agent settings, you can specify one of the following actions:

- Do not require a password to retrieve files.
- Require a password to retrieve files. The password is the password associated with the account. If you upgraded the Agent from a Legacy PC Agent, the password is the encryption key for the account.

If you configured the Agent to require credentials, the Agent prompts the user for this information before it opens the Retrieve panel.

File selection

By default, the Agent's Retrieve panel lists the most recent versions of files that the Agent created during the last backup. You can also display all versions of backed up files that were on your system at the time of the selected backup. You can use these options to retrieve earlier versions of files as well as the most recent ones.

To display different file versions

1. To change the file versions that are displayed in the Browse view, select an option from the **Show versions** list. The list includes the following options:
 - **Most Recent.** Lets you display the backed up files that were on your system at the time of the recent backup. This is the default selection.
 - **As of Backup Date.** Lets you display the backed up files that were on your system at the time of the selected backup date.
 - **All.** Lets you display all versions of the files that are currently stored on the Data Center server.
2. If you selected **As of Backup Date**, select a backup date from the displayed list and click **OK**.

To select files that you want to retrieve, select the check box next to each folder or file.

For more information about how to select files, see Agent Help.

Destination options

After you select files to retrieve, the Agent displays the Retrieve Options dialog. On the Retrieve Options dialog, you can select any of the following options as destinations for retrieved files:

- **Save all files in folder.** Specifies a specific folder as the destination for retrieved files. The default destination is `c:\Users\<accountname>\Documents`

where

`<account_name>` is the name of the user account.

If you select **Save all files in folder**, you can also select **Maintain original folder structure**.

When you select this option, the Agent creates a file path in the destination folder that is the same as the file path in the original folder.

- **Save files in their original locations.** Restores files to their original locations. When you select this option, you disable the other destination options.

File name conflict options

In addition to using the Retrieve Options dialog to select destinations for retrieved files, you can specify how to rename files in case a file name conflict occurs. You can choose either of the following options:

- **Rename the files being retrieved.** Renames a file when the destination folder contains a file with the same name, and adds a number to the end of the file name when it renames files.

For example, if you retrieve a file named `Report.doc` and this file exists in the destination folder, Retrieve would rename the file to `Report1.doc`.

- **Overwrite the existing file.** Overwrites files on your computer if the retrieved files have the same name as existing files.

Retrieve files using the Retrieve command

To use the Agent command-line interface to retrieve backed up files from the Data Center, issue the Retrieve command.

NOTE:

The Retrieve command does not support single sign-on (SSO) credentials. Therefore, if a user in an SSO community has an Agent Configuration that requires a password for retrievals, he or she cannot use the Retrieve command to retrieve files. However, a technician can use the Retrieve command to retrieve files on the user's behalf. To do so, the technician must use the Retrieve command with a Technician ID that meets the following criteria:

- has native Connected Backup credentials or is mapped to an enterprise directory
- has permission to access the SSO community in which the user's account resides

After you issue the Retrieve command, the Agent connects to the Data Center and uses its account number to authenticate. The Agent submits the retrieval request to the Data Center and waits to receive files.

If a file that the Agent retrieves has the same name as a file in the destination folder, the Agent renames the file in the destination folder. For more information about how to gain access to the Agent command-line interface, see [Agent interfaces, on page 85](#).

Use the Retrieve command in the following situations:

- You use scripts to automate computer management or to manage computers from remote locations.
- You want to retrieve file images stored on media.

The Retrieve command is the only way to retrieve files from images stored on media. For more information about retrieving files from images, see [Retrieve data from media, on page 118](#).

For more information about performing command-line installations, see *Installing PC Agents*.

Retrieve command syntax

The Retrieve command uses the following syntax:

```
retrieve.exe  
{-date | -d} YYYY-MM-DD  
{-time | -t} HH:MM:SS  
[{-backupdates | -bd}]  
(-techid | -id) technician_ID  
{-password | -pw} technician_password  
[{-destination | -dp} path]  
[{-source | -s} source_path | {-alldata | -a}]  
[{-skipfilebyname | -sk}]
```

[{-norecurse | -nr}]

[{-help | -?}]

Retrieve command options

The Retrieve command has the following options:

Option	Description
{-date -d} YYYY-MM-DD	<p>(Optional.) The date of the file that you want to retrieve.</p> <p>If you do not use the <code>-date</code> or <code>-time</code> parameters, the retrieve command retrieves the most recent version of the files.</p> <p>If you use <code>-date</code> with <code>-time</code>, you retrieve files as of the date and time that you specify.</p> <p>If you use <code>-date</code> without <code>-time</code>, you retrieve files as of midnight on the date that you specify.</p>
{-time -t} HH:MM:SS	<p>(Optional.) The time of the file that you want to retrieve. Use a 24-hour time format to specify the time.</p> <p>If you do not use the <code>-time</code> or <code>-date</code> parameters, you retrieve the most recent version of the files.</p> <p>If you use <code>-time</code> without <code>-date</code>, you retrieve files as of the current date and the time that you specify.</p> <p>If you use <code>-time</code> with <code>-date</code>, you retrieve files as of the date and time that you specify.</p>
{-techid -id} technician_ID	<p>(Required only as indicated.) The ID of a valid user or technician that either has native Connected Backup credentials or is mapped to an enterprise directory.</p> <div><p>NOTE: This option does not support IDs for SSO accounts.</p></div> <p>Required only as follows:</p> <ul style="list-style-type: none">For users, if you run the Retrieve

	<p>command from a computer that hosts an Agent configured for an account other than your own.</p> <ul style="list-style-type: none"> For technicians, it is always required. In addition, the technician account must have permission to access the community in which the user's account resides.
<code>{-password -pw} <i>technician_password</i></code>	<p>(Required only as indicated.) The password associated with the user or technician account ID.</p> <p>NOTE: This option does not support passwords for SSO accounts.</p> <p>Required only as follows:</p> <ul style="list-style-type: none"> For users, if your Agent Configuration requires passwords for file retrieval. However, if it does, and your account is mapped to an SSO account, you cannot use the Retrieve command to retrieve files. For technicians, it is always required. In addition, the technician account must have permission to access the community in which the user's account resides.
<code>[{-destination -dp} <i>path</i>]</code>	<p>(Optional.) Specifies where you want to put the restored files. Use the following syntax:</p> <p>drive:\path</p> <p>If the original drive does not exist, the Retrieve command creates the following path for the retrieved files:</p> <p>@Drive_n\original_filepath</p> <p>If you do not specify this parameter, the command restores files to their original locations.</p>
<code>[{-source -s} <i>source_path</i> {-alldata -a}]</code>	<p>(Optional.) Specifies the files that you want to retrieve. You can specify one of the following options:</p>

	<ul style="list-style-type: none">• <code>-source -s:</code> Specifies the path to the files that you want to retrieve. You can use the asterisk (*) and the question mark (?) as wildcard characters. The * wildcard matches any combination of characters. The wildcard matches any single character.• <code>-alldata -a:</code> Retrieves all data from the backup specified in the <code>-date</code> parameter. This parameter is the default if you do not specify the <code>-source</code> parameter.
<code>[{-skipfilebyname -sk}]</code>	<p>(Optional) Skips the file retrieval if a file with the same name is present in the retrieval location.</p> <div><p>NOTE: To be used with precaution. This option can be used if you want to skip the file to be retrieved based on its file name. If a file with the same name exists at the retrieval location, retrieval of that file will be skipped without comparing the file contents or metadata.</p></div>
<code>[{-norecurse -nr}]</code>	<p>(Optional.) Tells the Agent not to retrieve files from lower level subfolders. Use this option with the <code>-source</code> or <code>-s</code> option.</p>
<code>[{-help -?}]</code>	<p>(Optional.) Displays help for the Retrieve command.</p>

Examples of how to use the Retrieve command

The following examples show ways that you can use the retrieve command.

Skip retrieval of a file

This command skips the file retrieval if a file with the same name is present in the retrieval location.

```
retrieve.exe -date 2014-01-15 -time 02:15:00 -techid supt346 -password 678ioh7 -  
destination c:\restore -source c:\reports\myfile.doc -skipfilebyname
```

Retrieve a single file

This command retrieves a file named `myfile.doc` from a backup set. The example does not specify a date or time. Therefore, the command retrieves the most recent version of the files. The example does not specify a destination parameter. Therefore, the command restores the file to its original location.

```
retrieve.exe -techid supt346 -password 678ioh7 -source c:\reports\myfile.doc
```

Retrieve a single file and specify date and time

This command retrieves a file named `myfile.doc` from a backup set with a date of January 15, 2014 and time of 2:15 a.m. The example does not specify a destination parameter. Therefore, the command restores the file to its original location.

```
retrieve.exe -date 2014-01-15 -time 02:15:00 -techid supt346 -password 678ioh7 -  
source c:\reports\myfile.doc
```

Specify a retrieve location

This command retrieves a file named `myfile.doc` from a backup set with a date and time of January 15, 2014, 2:15 a.m., and saves the file to a folder named `c:\restore`.

```
retrieve.exe -date 2014-01-15 -time 02:15:00 -techid supt346 -password 678ioh7 -  
destination c:\restore -source c:\reports\myfile.doc
```

Retrieve files only in a top-level folder

This command retrieves files in a folder named `c:\reports`. In this example, the `NoRecurse` parameter indicates that the command does not retrieve files in subfolders.

```
retrieve.exe -date 2014-01-15 -time 02:15:00 -techid supt346 -password 678ioh7 -  
destination c:\restore -source c:\reports -norecurse
```

Retrieve all files in a backup set

The command retrieves all files in a backup set with a date and time of January 15, 2014, 2:15 a.m.

```
retrieve.exe -date 2014-01-15 -time 02:15:00 -techid supt346 -password 678ioh7 -  
destination c:\restore -alldata
```

Retrieve data from media

You can retrieve data from images stored on CDs, DVDs, or Network Attached Storage (NAS) devices. You use this option when the size of a retrieval request exceeds the capacity of the network connection.

Technicians use Support Center to order account images on media for users to retrieve. Alternately, users can order images for themselves through the Account Management Website. For more information about how to order images on media, see . In response to the requests, Technicians use the DataBundler application to create account images on media.

Account images include a version of the Agent as well as the backed up files. You retrieve files from media similarly to how you retrieve them in the Agent User interface. You open the Agent User interface on the media and select files from the Retrieve tab.

If you host your own Data Center, for more information, refer to *Administering the Data Center* and DataBundler Help.

Use the Retrieve tab to retrieve data from media

To retrieve files from media, use the Retrieve tab on the image stored on the media.

To use the Retrieve tab to retrieve data

1. Do one of the following:
 - If the media is a CD or DVD, insert the disk into the appropriate drive.
If Windows autorun is enabled on the Agent host computer, the Agent User interface opens. Otherwise, navigate to the device and run the Agent executable file.
 - If the media is a NAS device, use Windows Explorer to navigate to the device and run the Agent executable file.
2. If the account image is protected by a password, enter the password when the Agent prompts you to do so.

If you used the Account Management Website to order the media, the password must match the one that you entered when you submitted the order. If a technician ordered the media on your behalf, the password must match the one the technician specified when he or she used Support Center to order the media.
3. Click the **Retrieve** tab.
4. Select the files that you want to retrieve, and click **Retrieve**.
5. Specify a destination for the retrieved files and a conflict resolution option to handle file naming conflicts.

For more information about how to retrieve files, see Agent Help.

Retrieve data using MyRoam

MyRoam lets users retrieve backed-up files to any computer without using the Agent User interface. Users must log on to the Account Management Website to have access to MyRoam. After users select the files that they want to retrieve, the Data Center creates a ZIP archive file that contains the selected files. Users download this file and extract it to a location on their computer.

To use MyRoam, the Agent account and the community where the account is registered must have MyRoam enabled.

The MyRoam retrieval process

The process to retrieve files with the MyRoam application comprises the following steps:

1. You select a backup set that includes the files that you need.
2. The MyRoam application displays a list of files that you can select for retrieval.
3. You select the files that you want to retrieve.
4. The Data Center server creates a ZIP archive file that contains the files that you selected.

If you initiate the retrieval from a computer with a different type operating system than the computer on which the Agent account resides, the Data Center creates a ZIP file that contains only the files that you selected. The ZIP file does not restore the metadata associated with the files.

If you initiate the retrieval from a computer that runs the same type operating system as the computer on which the Agent account resides, the Data Center creates a ZIP file that contains the following files:

- MyRoam_Expander file
- A message file
- A data file

The MyRoam_Expander file is an executable file that restores your files along with metadata that is associated with the files.

For example, if you use Safari on a Mac computer to download files from an Agent account on a Windows computer, the Data Center creates a ZIP file that contains only the files that you selected for retrieval. If you use Safari on a Mac computer to download files from an Agent account on a Mac computer, the Data Center creates a ZIP file that contains the files you selected for retrieval and the MyRoam_Expander executable file.

5. You download the ZIP file to a location of your choice. The ZIP file preserves the folder structure for the files that you selected. Because the folder structure remains intact, you do not have to be concerned with file name conflicts as you would if you were to use the Agent interface to retrieve the files.
6. You extract the contents of the ZIP file, and then run the MyRoam_Expander application, if included in the ZIP file.

NOTE:

MyRoam has a 2 GB data limit. You cannot zip or unzip a file that has an uncompressed data size that is more than 2 GB.

Files that you cannot retrieve

You can retrieve most backed-up files except for e-mail files that the Agent backed up with the Connected EmailOptimizer technology. You must use the Agent User interface to retrieve these files.

You can retrieve encrypted files. However, MyRoam retrieves encrypted files to an unencrypted state.

NOTE:

You can retrieve multistream files. However, the MyRoam application retrieves the main data stream only.

Select files for retrieval

When you select **Retrieve files using MyRoam**, the MyRoam application compiles a list of files that you can retrieve from the Data Center. When the list is ready, the MyRoam application displays a Browse view that lists the files that your Agent previously backed up. The default view for this page shows the latest version of each backed-up file.

To select files for retrieval

1. To find the files that you want to select, use one of the following methods:
 - Browse.
 - Use a wildcard search.
 - Display specific file versions.
2. Select the check box next to each file that you want retrieve.
3. To start the retrieve process, click **Retrieve**.

To browse for files

1. To find specific files to select for retrieval, expand the folders in the left pane of the Browse view.
2. To sort the list of files, click any column heading.

An up-arrow in the column heading indicates that the column is sorted in ascending order. A down-arrow indicates that the column is sorted in descending order.

To use a wildcard search to find files

1. Click **Find**.

The MyRoam application displays the **Find** options.

2. In the **Name contains** field, enter the full or partial name of the file you want to find.

The names are not case sensitive.

You can use the following wildcard characters in the name:

*	Use this character to match zero or more characters. For example, *.doc matches any file that has a file extension of .doc.
?	Use this character to match a single character. For example, ab?.doc matches abc.doc and aby.doc.

3. In the **Look in folder** box, enter the full path for a folder that you want to search, or select a folder in the left pane.

Find searches all folders within the folder that you specify.

TIP:

The default location for the **Look in folder** box is the folder selected in the left pane. To change the folder location, select a new folder in the left pane.

4. Click **Find Next**.

In the list below the **Find** options, the Agent highlights the first file or folder that it finds.

5. Do one of the following:

- Click **Find Next** or use the arrow buttons to highlight the next folder or file that matches the Find criteria.
- Click **Find Previous** or use the arrow buttons to highlight a previously found file or folder.

6. From the displayed list, select the file that you want to retrieve.

7. To hide the **Find** options, click **X** in the upper right corner of the Find pane, or click **Browse**.

In the **Show** field, the Agent displays the list of files that match the criteria.

To display different file versions

1. To change the file versions that are displayed in the Browse view, select an option from the **Show versions** list. The list includes the following options:

- **Most Recent**. Lets you display the backed up files that were on your system at the time of the recent backup. This is the default selection.
- **As of Backup Date**. Lets you display the backed up files that were on your system at the time of the selected backup date.
- **All**. Lets you display all versions of the files that are currently stored on the Data Center server.

2. If you selected **As of Backup Date**, select a backup date from the displayed list and click **OK**.

Retrieve files

After you select the files that you want to retrieve, you are ready to download the selected files.

To download the selected files

1. In the MyRoam Browse view, click **Retrieve**.

The MyRoam application displays information about the total size of the files that you select for retrieval and the estimated download times for each file. It also includes instructions on how to download the ZIP archive file or Mac executable file that contains your retrieved files.

2. Select the type of file that you want the Data Center to generate:

- a. **Zip file**. Restores data only.

By default, if you initiate the retrieval from a computer with a different type operating system than the computer on which the Agent account resides, the Data Center creates a ZIP file that contains the files that you selected for retrieval. The ZIP file does not restore the metadata associated with the files.

If you initiate the retrieval from a computer with a different operating system than the computer on which the Agent account resides, do not select this option.

- b. **Executable**. Restores data and metadata.

By default, if you initiate the retrieval from a computer with the same type operating system as the computer on which the Agent account resides, the Data Center creates a ZIP file that includes the MyRoam_Expander file. This executable file restores your files along with metadata that is associated with the files.

3. Click **Download**.
4. In the **File Download** box, click **Save**.
5. In the **Save As** box, specify a location for the ZIP file, and click **Save**.
6. Do one of the following:
 - If the ZIP file is a standard one that contains the files that you selected for retrieval, extract the contents of the ZIP file to where you want them on your local computer.
 - If the ZIP file contains the MyRoam_Expander.exe file, extract the contents of the file to a temporary location, and then do one of the following to run the MyRoam_Expander application to restore your files:
 - On computers that run Windows XP, double-click the MyRoam_Expander.exe file.
 - On computers that run Windows 7 or Windows 8, right-click the MyRoam_Expander.exe file, and then click **Run as administrator**.

The program restores the files to the root of the directory that contains the MyRoam_Expander.exe file.

To use MyRoam to retrieve files

1. Log on to the Account Management Website:
2. Select **Retrieve Files with MyRoam**.
3. Select the files that you want to retrieve, and then click **Retrieve**.

The MyRoam application creates a compressed archive file (ZIP file) that contains all of the selected files.

NOTE:

MyRoam has a 2 GB data limit for creating zip files. You cannot zip or unzip a file whose uncompressed data is more than 2 GB.

4. Click **Download** to download the compressed ZIP file.

For more information, see MyRoam Help.

Chapter 11: Agent history and reports

This chapter explains how to view Agent History and Support Center reports to monitor Agent activity.

- [Agent history, below](#)
- [Support Center reports, on page 127](#)

Agent history

Use the Agent History to verify successful Agent activity or diagnose a potential problem. The Agent History lets you view details about the following events:

- Account recovery
- Account registration
- Backup
- File list synchronization
- Internal diagnostics
- Retrieve

The Agent records details about activities and interactions with the Data Center in a file that you can view on the Agent User Interface View History dialog.

Each event entry contains the following information:

- The type of activity
- The outcome of the event
- The date and time that the activity started and ended

You can export the list of events to XML files that you can send to a technical support representative.

View Agent history in the Agent interface

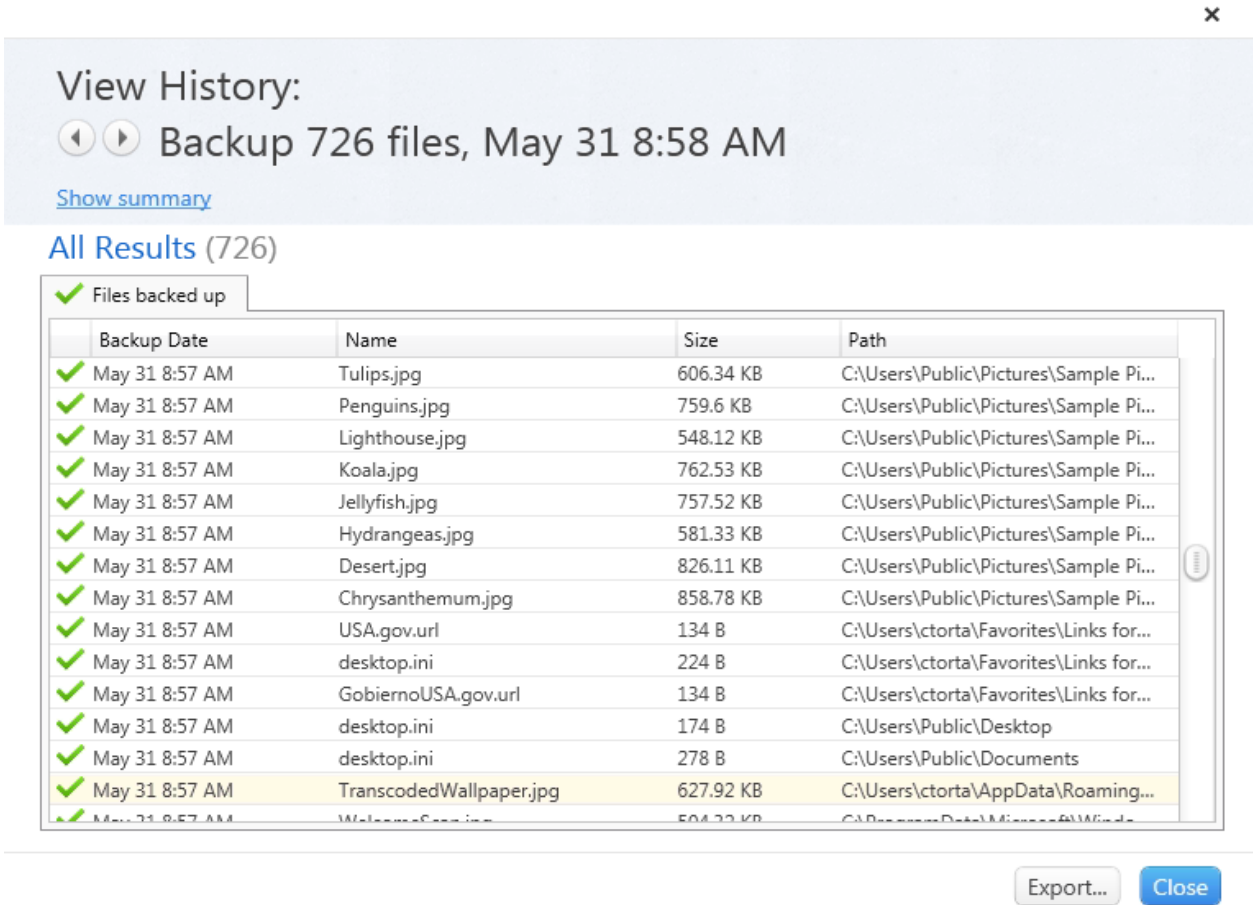
View Agent history from the View History dialog in the Agent interface.

To view Agent history from the Agent interface

1. Open the Agent interface.
2. Click the date link next to **Last Backup** in the **Back Up Panel**.
The View History dialog opens.
3. Navigate through the messages using the left and right arrows.

To export the list of events on the View History dialog to a file

The following figure shows the View History dialog:



You can view details about a specific event, and export the details to a file.

To view details about an event

1. Open the Agent interface.
2. Click the date link next to **Last Backup** in the **Back Up Panel**.
The View History dialog opens.
3. In the **View History dialog**, select an event.
4. Click **Show Summary** to display a detailed summary of the activity.
5. Optionally, to save the details to a file, click **Export**.

The following figure shows an example View History Details dialog:

View History:

◀▶

Backup 726 files, May 31 8:58 AM

[Hide summary](#)

Summary:

Backup outcome: Completed successfully

Total Time: 0 hours, 2 mins, 33 secs

Total size of backup set: 726 files, 57.92 MB

Files that needed backup: 726 files that were new or changed since the last backup

Files backed up: 726 files

Files not backed up: 0 files

Size of files backed up: 57.92 MB

Size after optimization: 57.92 MB

Size of data sent: 45.49 MB after compression

All Results (726)

✔ Files backed up

	Backup Date	Name	Size	Path
✔	May 31 8:57 AM	2.txt	32 KB	C:\testdata\wow327671
✔	May 31 8:57 AM	2.txt	16 KB	C:\testdata\wow163831
✔	May 31 8:57 AM	1.txt	32 KB	C:\testdata\wow327671
✔	May 31 8:57 AM	1.txt	16 KB	C:\testdata\wow163831
✔	May 31 8:57 AM	1.txt	48 KB	C:\testdata\wow491511

Export...

Close

For more information, see Agent Help.

Viewing Agent History in Support Center

You can use Support Center to view the same list of events that you view in the Agent History tab in the Agent User interface. When you select one or more events, you can display detailed information about each event.

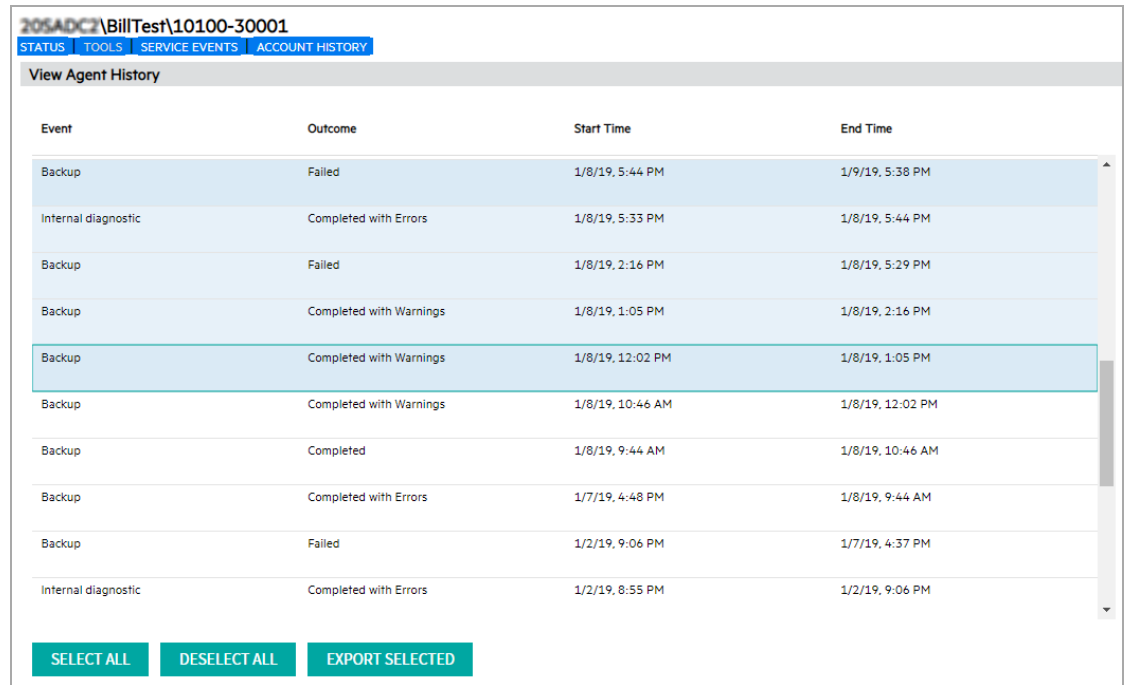
You can also view export details in an export file. If you enable diagnostics for the account, Support Center displays the diagnostic information in the Agent History view. You can export the content to a file that you can e-mail to a technical support representative.

For more information, see Support Center Help.

To view Agent History from Support Center

1. Open Support Center.
2. Search for the account for which you want to view the Agent History.
3. Click **Tools > View Agent History**.

The View Agent History page opens. The following image is an example of the entries in the View Agent History page:



Event	Outcome	Start Time	End Time
Backup	Failed	1/8/19, 5:44 PM	1/9/19, 5:38 PM
Internal diagnostic	Completed with Errors	1/8/19, 5:33 PM	1/8/19, 5:44 PM
Backup	Failed	1/8/19, 2:16 PM	1/8/19, 5:29 PM
Backup	Completed with Warnings	1/8/19, 1:05 PM	1/8/19, 2:16 PM
Backup	Completed with Warnings	1/8/19, 12:02 PM	1/8/19, 1:05 PM
Backup	Completed with Warnings	1/8/19, 10:46 AM	1/8/19, 12:02 PM
Backup	Completed	1/8/19, 9:44 AM	1/8/19, 10:46 AM
Backup	Completed with Errors	1/7/19, 4:48 PM	1/8/19, 9:44 AM
Backup	Failed	1/2/19, 9:06 PM	1/7/19, 4:37 PM
Internal diagnostic	Completed with Errors	1/2/19, 8:55 PM	1/2/19, 9:06 PM

4. To display the details for a particular event, select the event and click **View**.
5. To export the details to a TXT or HTML file, click **Export Selected**.

The Export dialog box opens.

6. Browse to the location on your computer where you want to store the details .txt file, and click **Save**.

The Support Center names the file `AgentLog_account_number.txt`, where `account_number` is the number associated with the Agent account.

7. To close the View History Details page, click **Close**.

Support Center reports

You can use Support Center to report on the accounts on your Data Center. You can perform the following tasks:

- Run default reports installed with Support Center.
- Create and edit your own reports.
- View and display charts.
- Save and export reports in XML format.
- Create account groups.

Default reports

Support Center includes a default set of report templates. You can edit a default report template to meet your needs. If you do this, save the edited default report template under a new name. Doing so ensures that you do not lose the original default configuration and that Support Center upgrades do not overwrite your customizations.

For example, a future version of Support Center has updated default report templates. When you upgrade Support Center, you overwrite the original default versions. The following tables describes the default report templates that are installed with Support Center:

Support Center report template	Description
Account List	A list of accounts in Support Center. Support Center sorts the list by community, then by account name.
Account Size	The amount of data that each account on the Data Center stores.
Account User Log Errors	The information on accounts that have failed to backup one or more consecutive times, and the type of error it encountered.
Accounts Not Backing Up	A list of PC accounts that the Data Center has not backed up for at least 10 days.
Activity Trends	A graph that shows the trends in the backup activity of accounts. The graph shows data in gigabytes (GB) backed up per day.
Backup Activity	A list of accounts by community, and the amount of data backed up month to date.
Configurations	The assigned and actual Agent configurations for each account.
Data Access by Technicians	Information about which technicians accessed a specific account and the type of activity that occurred.
Encryption Key Disclosure	Accounts with encryption keys that Support Center technicians have viewed.
FileTypeSizes	The fifty most frequently backed-up file extensions by size for accounts that have been through at least one compaction cycle.
First Backup Size	Amount of data in megabytes (MB) backed up by a group of accounts during the first backup.
Heavy Hitters	Accounts backing up the most data in MB.
Heavy Hitters	Accounts with more than 20 GB of data on the Data Center.

Support Center report template	Description
Last Backup	A list of 8.x accounts by community, with their last backup date and status.
Restore Activity	A list of accounts by community, and the amount of data restored by each account during the month to date. Restore activity includes Agent Retrieve, iRoam, and Sharing.
Restore Report	The Restore Report default report displays the information on accounts that have done the file retrievals. The report provides product restore statistics and metrics to the administrators. The report processes all the retrieve outcomes such as Successful, Completed with warning, Completed with Error, Failed and Canceled along with the type of error or warning messages if there is any. The report output can be sorted by account or community. The report processes events that are filtered by ALL(no filtering), Successful, Failed or Canceled.

Report components

To generate reports, you use the following components:

- **Report template.** Contains the parameters you specify to generate a report.
- **Report.** Contains the actual data, based on the parameters you specify in the report template.

You can include the following types of information in reports:

Report area	Description
Account information	Name and demographic information for a group of accounts. For more information about how to create groups of accounts, see Create account groups, on page 131 .
Account summary	Status, Agent version, Agent configuration, and last backup date for a group of accounts.
Current data sizes	Total number and size of files stored on the Data Center for a group of accounts.
Account first backup sizes	Total number and size of files transferred by a group of accounts during their first backup.
Activity types	Number of backups, restores, and CD orders performed within a given time frame.

Create report templates

To create a new report template

1. Click the **Report Templates** node under the community for which you want to create a report.
If you want to, you can include subcommunities in the report.
The first Create Report Templates page opens.
2. Select the accounts for which you want to create a report.
3. Complete the subsequent report template pages to select the information that you want to display in the report and specify how to sort it.
4. After you create the report template, save the template on the Support Center server for reuse.
You can edit the report template any time.

Generate and view reports

After you save a report template, you can run the corresponding report at any time. You also can rerun the report in the future. Depending on the amount of data that you need to compile the report, it can take minutes or hours for the report to run. When the report is complete, Support Center displays the name of the report under the **Reports** node.

To generate and view a report

1. Log on to Support Center.
2. Select a community.
3. Expand the **Reports** template node and select the type of report that you want to generate.
4. Click **Run Report**.
The Report Queue page opens.
5. Expand the reports node and select the report that you want to view.
The Report page opens. You can print the report, or download it to an XML file.

For more information, see Support Center Help.

View charts

You can include charts in reports. Support Center uses Adobe® SVG Viewer to display charts. If your computer does not have Adobe SVG Viewer installed, you can download it through Support Center. You can display a chart for the following types of information:

- Number of accounts
- Account activity values

- Total account data size values
- First backup size values

Save report results in XML

On the Reports page, you can view reports in XML format. Typically, you have to display the XML format only when Corporate Support requests this information. After you display the XML format, you can copy and paste the content to another file that you can send to Corporate Support.

Create account groups

You can use the reports feature to create a group of accounts and then change all of the accounts in the group simultaneously. You can use the reports feature to change accounts in the following ways:

- Change the account status
- Change the Agent configuration
- Move the accounts to a different subcommunity

For example, you can create a report to find all accounts that have not performed a backup in the past 90 days. You can then use the list of accounts to change the status of the accounts to canceled or on hold. The account group is a temporary entity. After you close the Support Center session, or after the session times out, Support Center deletes the account group.

Index

A

- account groups 131
- account images 28
- account information, viewing 25
- Account List report 128
- Account Management Website
 - branding requirements 72
 - deploying 76
 - editing Terms of Use and Privacy 77
 - interface 79
 - Legacy PC Agent accounts 78
 - logon credentials 78
 - Logon page 81
 - managing logon credentials 79
 - overview 75
 - Registration page 80
 - security 76
 - setting default URL 77
 - Summary page 81
 - technician access 78
 - user access 77
 - Welcome page 79
- account numbers 24
- Account Size report 128
- account status 25
- account status, changing 26
- accounts
 - changing primary server 27
 - description 15
 - reserving 27
 - technician 31
- Accounts Not Backing Up report 128
- accounts on hold 26
- Activate.exe 93
- active account 26
- Activity Trends report 128
- Agent 42
 - accounts 15
 - branding 60
 - branding requirements 71
 - configurations 12
 - distributing 18
- Agent About window, branding 68
- Agent accounts
 - enabling MyRoam 84
- Agent branding requirements 71-72

- Agent command-line interface 93
 - backup command 106
- Agent command line interface, retrieving files 113
- Agent configurations
 - overview 41
- Agent console, branding 67
- Agent history
 - types of events 124
 - viewing in Support Center 126
 - viewing in the Agent interface 124
- Agent Installation Wizard
 - branding 64
- Agent main window 90
- Agent rule sets 42
- Agent security 30
- Agent settings 42
- Agent Start-up Wizard 86
- Agent Status icon
 - branding 68
 - branding impact 68
 - displaying 30
- Agent user interface 90
 - branding 65
 - using 92
- Agents
 - deploying 17
 - sending messages 28
- allocating licenses 35, 38

B

- backup
 - Agent command line interface 106
 - Backup Set tab 104
 - command-line examples 107
 - command-line options 107
 - command-line syntax 106
 - encrypted files 100
 - file preparation 97
 - modified file identification 97
 - monitoring progress 105
 - multistream files 100
 - open files 100
 - reparse points 100
 - results 98
 - security descriptors 101
 - settings and configurations 101
 - sparse files 101
 - Summary tab 104
 - using the Agent user interface 103
- Backup Activity report 128

- backup messages 29
- backup process
 - disk scan 95
 - file analysis 96
- Backup Set tab 104
- backup settings 101
- backup.exe 93
- bandwidth throttling 39
- base files 96
- branding
 - Agent 60
 - Agent About window 68
 - Agent console 67
 - Agent Installation Wizard 64
 - Agent shortcut menu 68
 - Agent splash screen 63
 - Agent user interface 63, 65
 - communities 74
 - Enter Password dialog box 66
 - inherited 69
 - overview 60
 - process 73
 - requirements 71
 - Account Management Website
 - graphics 72
 - Agent graphics 71
 - Support Center graphics 71
 - Support Center 68
 - Support Center image requirements 71
 - Support Center Logon page 69
 - Synchronizing window 66
 - technician requirement 72
 - Welcome to the Agent window 66
- branding requirements
 - Agent graphics 71-72
- browsing to select files 120

C

- canceled accounts 26
- certificates, Agent security 58
- changing the status of an account 26
- charts 130
- command-line examples
 - backup 107
 - file retrieval 116
- command-line options, retrieve 114
- command-line syntax
 - backup 106
 - retrieve 113
- communities 12, 21
 - applying bandwidth throttling 39

- branding 74
 - creating 17
 - creating new 22
 - default 21
 - disabling registration 23
 - enabling MyRoam 83
 - primary server, changing 27
- compound mail files 96
- configurations
 - Agent 12, 41
- Configurations node 17
- Configurations report 128
- configurations, enabling MyRoam 83
- conflicts during retrieval 112
- connections
 - Data Center 97
 - interruptions 17
 - properties 15
 - proxy servers 16
 - to Data Center 15
- creating communities 17
- creating technician accounts 31

D

- Data Center
 - applying bandwidth throttling 39
 - connections during backup 97
- default
 - community 21
- default URL to Account Management Website, setting 77
- deleted accounts 26
- deleted files 96
- DeltaBlock 96
- deploying Agents 17
- destination options for file retrieval 112
- disabling registration in communities 23
- disk scan 95
- displaying the Agent Status icon 30
- distributing the Agent software 18
- downloading files 121

E

- email notification of file retrieval 108
- email notification to technicians 30
- EmailOptimizer, compound mail files 96
- enabling backup messages 29
- encrypted files
 - backup of 100
 - retrieval of 109
- Encryption Key Disclosure report 128

encryption, Agent 57
Enter Password dialog box, branding 66

F

features, licensed 33
file analysis for backup 96
file name conflicts during retrieval 112
file repackaging during retrieval 108
file size 96
file transmission during backup 98
file versions 112, 121
files
 base 96
 deleted 96
 retrieving 110
 selecting for retrieval 111
FileTypeSizes report 128
Find feature for selecting files 120
firewalls 17
First Backup Size report 128

G

generating reports 130

H

Heavy Hitters Cumulative report 128
Heavy Hitters report 128
history, Agent 124

I

informational messages 28
inheritance
 and Support Center objects 12
inheritance of objects in Support Center 12
inherited branding 69
installation
 MyRoam 83
interfaces
 Agent command-line 93
 Agent user 92
 Agent user interface 90

L

Legacy PC Agent accounts, logon
 credentials 78
licensed features 33
licenses
 allocating 35, 38
 allocation 32
 effect on accounts and communities 34

 enabling or disabling features 39
 expired 33
 inheritance 32
 managing 31
 moving accounts 34
 moving communities 34
 MyRoam 83
 used and unused 32
locked rules 47
logon credentials, Account Management
 Website 78
logon credentials, managing 79
Logon page, Account Management Website 81

M

mail file 96
managing licenses 31
MDATE 96
media 28
media, retrieving from 118
messages, backup 29
multistream files
 backup of 100
 retrieval of 109
MyRoam
 enabling for configurations and
 communities 83
 enabling for individual accounts 84
 installation 83
 license and permission requirements 83
 overview 82
 retrieving files 119

N

non-SOCKS proxy servers 16
notification of file retrieval 108

O

open files
 backup of 100
 retrieval of 110
open files, backup requirements 106
options
 backup 107
ordering account images on media 28
Outlook, compound mail files 96

P

permissions
 MyRoam 83

- retrieve 111
- preparations
 - backup 97
- primary server, changing 27
- processing rules 48
- profile and Web site settings 42
- profile settings 42
- properties and settings 17
- proxy servers 16
 - Agent connection settings 16
 - connecting through 16

R

- Registration page, Account Management
 - Website 80
- reparse points
 - backup of 100
 - retrieval of 109
- reports 12
 - account groups 131
 - Account List 128
 - Account Size 128
 - Accounts Not Backing Up 128
 - Activity Trends 128
 - Backup Activity 128
 - components 129
 - Configurations 128
 - creating 130
 - creating and viewing 129
 - default 128
 - Encryption Key Disclosure 128
 - FileTypesizes 128
 - First Backup Size 128
 - generating and viewing 130
 - Heavy Hitters 128
 - Heavy Hitters Cumulative 128
 - in Support Center 127
 - Restore Activity 129
 - saving as XML 131
 - saving in XML format 131
 - viewing charts 130
- requirements
 - backup of open files 106
 - branding 71
- reserving Agent accounts 27
- Restore Activity report 129
- Restore Report 129
- retrieval
 - encrypted files 109
 - file repackaging 108
 - selecting files 111

- retrieve
 - command-line examples 116
 - command-line options 114
 - command-line syntax 113
 - destination options 112
 - file name conflicts 112
 - files 120
 - multistream files 109
 - open files 110
 - permissions 111
 - procedure 121
 - reparse points 109
 - retrieving from media 118
 - security descriptor support 110
 - sparse files 109
 - using MyRoam to retrieve files 119
 - using the Agent command line interface 113
 - using the Retrieve tab to retrieve files from
 - media 118
- retrieve tab 110
- retrieve.exe 93
- retrieving files 110
 - email notification 108
- rule sets 42
- rules 12
 - Agent Rules wizard 53
 - best practices 51
 - creating 51
 - locked 47
 - logic 48
 - page in Support Center 52
 - precedence 49
 - types 47
 - unlocked 47
 - user-created 47
 - Wizard 53

S

- security
 - Account Management Website 76
 - Agent encryption 57
 - certificates 58
 - firewalls 16
 - password protection for retrievals 58
 - preventing unauthorized access 57
 - protecting files on stolen computers 58
- security descriptors
 - backup of 101
 - retrieve support 110
- security, Agent 30

- selecting files
 - browsing 120
 - displaying file versions 112, 121
 - using Find 120
- sending messages to Agents 28
- SendOnce technology 96
- server, changing primary for account 27
- settings
 - Agent 42
 - backup 101
 - profile 42
 - proxy server 16
 - Web site 42
- shortcut menu, branding 68
- SOCKS 16
- sparse files
 - backup of 101
 - retrieval of 109
- splash screen, branding 63
- Start-up Wizard 86
- status of Agent accounts 25
- stolen computers, protecting files 58
- subcommunities
 - Agent accounts 23
 - creating 23
- Summary page, Account Management Website 81
- Summary tab 104
- Support Center
 - accessing, URL for 13
 - Agent configurations 12
 - branding 68
 - branding requirements 71
 - communities 12, 21
 - default community 21
 - interface 10
 - object inheritance 12
 - objects, and inheritance 12
 - opening 13
 - overview 9
 - reports 12, 127
 - rules 12
 - Rules page 52
 - subcommunities, 22
 - technicians 11
 - viewing Agent history 126
- Support Center interface
 - branding 70
- Support Center interface, 70
- Support Center logon page, branding 69
- Symbolic Link 96
- Synchronizing window, branding 66

T

- tabs
 - Backup Set 104
 - Retrieve 110
 - Summary 104
- technician access, Account Management Website 78
- technician accounts, creating 31
- technicians 11
- templates
 - reports 129
- templates, creating 130
- Terms of Use and Privacy, editing 77
- throttling bandwidth 39
- Touch 96
- transmission of files during backup 98

U

- unauthorized access 57
- unlocked rules 47
- UpdateProfile command 93
- user-created rules 47
- user access, Account Management Website 77
- user interface, Agent 90

V

- versions 42
- viewing
 - Agent History 124
 - reports 130
- viewing account information 25
- viewing account numbers 24

W

- Web site settings 42
- Welcome page
 - Account Management Website 79
- Welcome to the Agent window, branding 66
- Wizard
 - Agent Rules 53
- Wizard, Start-up 86

X

- XML
 - reports 131

Send documentation feedback

If you have comments about this document, you can [contact the documentation team](#) by email. If an email client is configured on this system, click the link above and an email window opens with the following information in the subject line:

Feedback on Administering PC Agents (Micro Focus Connected Backup 9.0.3)

Add your feedback to the email and click **Send**.

If no email client is available, copy the information above to a new message in a web mail client, and send your feedback to swpdl.ConnectedBackup.DocFeedback@microfocus.com.

We appreciate your feedback!